



[Go to Product page](#)

Datasheet for ABIN2779568

anti-BMP7 antibody (N-Term)

5 Images

3 Publications

Overview

Quantity:	100 µL
Target:	BMP7
Binding Specificity:	N-Term
Reactivity:	Human, Mouse, Rat, Dog, Rabbit, Cow, Pig, Guinea Pig, Horse
Host:	Rabbit
Clonality:	Polyclonal
Conjugate:	This BMP7 antibody is un-conjugated
Application:	Western Blotting (WB), Immunohistochemistry (IHC)

Product Details

Immunogen:	The immunogen is a synthetic peptide corresponding to a region of Rat
Sequence:	MVAFFKATEV HLRIRSTGG KQRSQNRSKT PKNQEALRMA SVAENSSSDQ
Predicted Reactivity:	Cow: 93%, Dog: 93%, Guinea Pig: 86%, Horse: 93%, Human: 100%, Mouse: 93%, Pig: 93%, Rabbit: 92%, Rat: 93%
Characteristics:	This is a rabbit polyclonal antibody against Bmp7. It was validated on Western Blot.
Purification:	Affinity Purified

Target Details

Target:	BMP7
Alternative Name:	Bmp7 (BMP7 Products)

Target Details

Background:	The function of Bmp7 remains unknown. Alias Symbols: BMP-7, Bmp7 Protein Size: 431
Molecular Weight:	49 kDa
Gene ID:	655
NCBI Accession:	NM_001191856
UniProt:	P18075
Pathways:	Steroid Hormone Mediated Signaling Pathway , Stem Cell Maintenance

Application Details

Application Notes:	Optimal working dilutions should be determined experimentally by the investigator.
Comment:	Antigen size: 141 AA
Restrictions:	For Research Use only

Handling

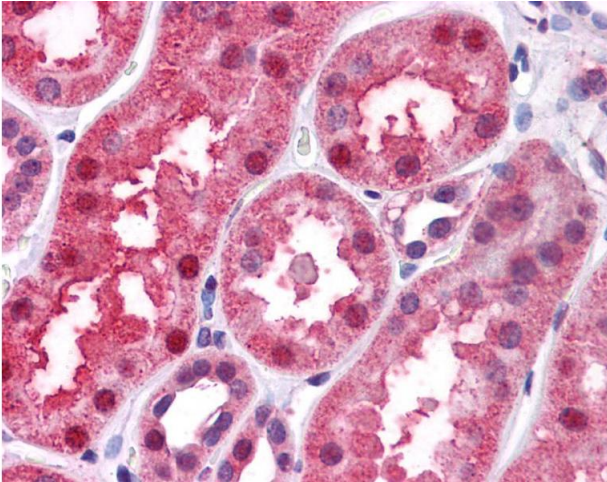
Format:	Liquid
Concentration:	Lot specific
Buffer:	Liquid. Purified antibody supplied in 1x PBS buffer with 0.09 % (w/v) sodium azide and 2 % sucrose.
Preservative:	Sodium azide
Precaution of Use:	This product contains Sodium azide: a POISONOUS AND HAZARDOUS SUBSTANCE which should be handled by trained staff only.
Handling Advice:	Avoid repeated freeze-thaw cycles.
Storage:	-20 °C
Storage Comment:	For short term use, store at 2-8°C up to 1 week. For long term storage, store at -20°C in small aliquots to prevent freeze-thaw cycles.

Publications

Product cited in:	Zhang, Muralimanoharan, Wortman, Mendelson: "Primate-specific miR-515 family members inhibit key genes in human trophoblast differentiation and are upregulated in preeclampsia." in:
-------------------	---

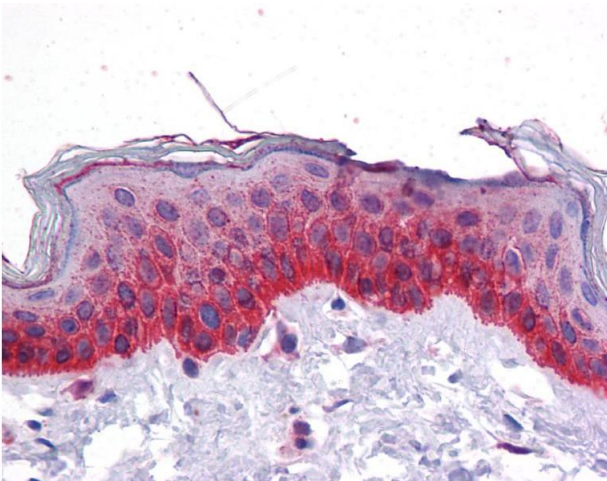
Proceedings of the National Academy of Sciences of the United States of America, (2016) ([PubMed](#)).

Images



Immunohistochemistry

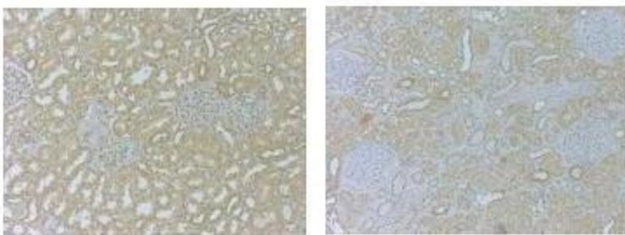
Image 1.



Immunohistochemistry

Image 2.

BMP7



Brown: BMP7
Blue: DAPI

Immunohistochemistry

Image 3. Sample Type : Human kidney (Proteinase K)
Primary Antibody Dilution : 1:1000 Secondary Antibody :
Anti-rabbit-HRP Secondary Antibody Dilution : 1:5000
Color/Signal Descriptions : Brown: BMP7 Blue: DAPI Gene
Name : Bmp7 Submitted by : Christina Theodoropoulos,
Queensland Univ. of Technology

Please check the [product details page](#) for more images. Overall 5 images are available for ABIN2779568.