

Datasheet for ABIN2779576  
**anti-PITX1 antibody (N-Term)**[Go to Product page](#)

## 4 Images

## Overview

Quantity:	100 µL
Target:	PITX1
Binding Specificity:	N-Term
Reactivity:	Human, Rat, Mouse, Cow, Guinea Pig, Dog
Host:	Rabbit
Clonality:	Polyclonal
Conjugate:	This PITX1 antibody is un-conjugated
Application:	Western Blotting (WB)

## Product Details

Immunogen:	The immunogen is a synthetic peptide directed towards the N terminal region of human PITX1
Sequence:	PADPREPLEN SASESSDTL PEKERGGEPK GPEDSGAGGT GCGGADDDPAK
Predicted Reactivity:	Cow: 100%, Dog: 100%, Guinea Pig: 100%, Human: 100%, Mouse: 100%, Rat: 100%
Characteristics:	This is a rabbit polyclonal antibody against PITX1. It was validated on Western Blot using a cell lysate as a positive control.
Purification:	Affinity Purified

## Target Details

Target:	PITX1
Alternative Name:	PITX1 ( <a href="#">PITX1 Products</a> )

## Target Details

Background:	<p>PITX1 is a member of the RIEG/PITX homeobox family, which is involved in organ development and left-right asymmetry. This protein acts as a transcriptional regulator involved in basal and hormone-regulated activity of prolactin. This gene encodes a member of the RIEG/PITX homeobox family, which is in the bicoid class of homeodomain proteins. Members of this family are involved in organ development and left-right asymmetry. This protein acts as a transcriptional regulator involved in basal and hormone-regulated activity of prolactin.</p> <p>Publication Note: This RefSeq record includes a subset of the publications that are available for this gene. Please see the Entrez Gene record to access additional publications.</p> <p>Alias Symbols: BFT, POTX, PTX1, CCF</p> <p>Protein Interaction Partner: RBPMS, RFX6, MGAT5B, PRR20A, C1orf94, LZTS2, ALG13, RNF31, ZBTB32, SPAG8, IPO13, MAGED1, HGS, PLSCR1, CDX4, TRIM23, UPF2, SMAD3, SMARCA2, NEUROD1, DVL3, RHOXF2, NR5A1, POU1F1, EGR1, RASAL1,</p> <p>Protein Size: 314</p>
-------------	--

Molecular Weight:	34 kDa
-------------------	--------

Gene ID:	5307
----------	------

NCBI Accession:	<a href="#">NM_002653</a> , <a href="#">NP_002644</a>
-----------------	---

UniProt:	<a href="#">P78337</a>
----------	------------------------

## Application Details

Application Notes:	Optimal working dilutions should be determined experimentally by the investigator.
--------------------	--

Comment:	Antigen size: 314 AA
----------	----------------------

Restrictions:	For Research Use only
---------------	-----------------------

## Handling

Format:	Liquid
---------	--------

Concentration:	Lot specific
----------------	--------------

Buffer:	Liquid. Purified antibody supplied in 1x PBS buffer with 0.09 % (w/v) sodium azide and 2 % sucrose.
---------	---

Preservative:	Sodium azide
---------------	--------------

Precaution of Use:	This product contains Sodium azide: a POISONOUS AND HAZARDOUS SUBSTANCE which should be handled by trained staff only.
--------------------	--

Handling

Handling Advice:	Avoid repeated freeze-thaw cycles.
Storage:	-20 °C
Storage Comment:	For short term use, store at 2-8°C up to 1 week. For long term storage, store at -20°C in small aliquots to prevent freeze-thaw cycles.

Images

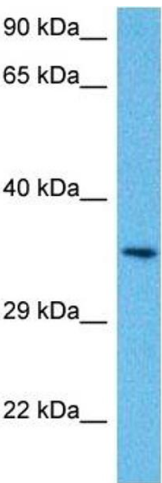


Western Blotting

**Image 1.** WB Suggested Anti-PITX1 Antibody Titration: 0.2-1 ug/ml ELISA Titer: 1:62500 Positive Control: MCF7 cell lysate

Western Blotting

**Image 2.** Host: Rabbit Target Name: PITX1 Sample Type: Human HeLa Antibody Dilution: 1.0ug/ml PITX1 is strongly supported by BioGPS gene expression data to be expressed in Human HeLa cells



Western Blotting

**Image 3.** Host: Mouse Target Name: PITX1 Sample Tissue:  
Mouse Brain Antibody Dilution: 1ug/ml

Please check the [product details page](#) for more images. Overall 4 images are available for ABIN2779576.