



[Go to Product page](#)

Datasheet for ABIN2779583  
**anti-RUVBL1 antibody (N-Term)**

4 Images

Overview

Quantity:	100 µL
Target:	RUVBL1
Binding Specificity:	N-Term
Reactivity:	Human, Mouse, Rat, Cow, Dog, Guinea Pig, Horse, Rabbit, Zebrafish (Danio rerio), Goat
Host:	Rabbit
Clonality:	Polyclonal
Conjugate:	This RUVBL1 antibody is un-conjugated
Application:	Western Blotting (WB)

Product Details

Immunogen:	The immunogen is a synthetic peptide directed towards the N terminal region of human RUVBL1
Sequence:	KIEEVKSTTK TQRIASHSHV KGLGLDESGL AKQAASGLVG QENAREACGV
Predicted Reactivity:	Cow: 100%, Dog: 100%, Goat: 77%, Guinea Pig: 100%, Horse: 100%, Human: 100%, Mouse: 100%, Rabbit: 100%, Rat: 100%, Zebrafish: 100%
Characteristics:	This is a rabbit polyclonal antibody against RUVBL1. It was validated on Western Blot using a cell lysate as a positive control.
Purification:	Affinity Purified

Target Details

Target:	RUVBL1
---------	--------

## Target Details

---

Alternative Name: [RUVBL1 \(RUVBL1 Products\)](#)

---

Background: RUVBL1 possesses single-stranded DNA-stimulated ATPase and ATP-dependent DNA helicase (3' to 5') activity. It is the component of the NuA4 histone acetyltransferase complex which is involved in transcriptional activation of select genes principally by acetylation of nucleosomal histone H4 and H2A. The NuA4 complex ATPase and helicase activities seem to be, at least in part, contributed by the association of RUVBL1 and RUVBL2 with EP400. NuA4 may also play a direct role in DNA repair when recruited to sites of DNA damage. RUVBL1 plays an essential role in oncogenic transformation by MYC and also modulates transcriptional activation by the LEF1/TCF1-CTNNB1 complex.

Alias Symbols: ECP54, NMP238, Pontin52, RVB1, TIH1, TIP49, TIP49A, INO80H, PONTIN

Protein Interaction Partner: RUVBL2, HUWE1, CEP250, RPAP3, UBC, NEDD8, SUMO1, RNF2, EED, rev, NEDD4, CDC42, IQGAP1, PARK2, FBXO6, USP49, FBXO46, FBXW4, RBM8A, TELO2, TTI1, URI1, RUVBL1, TRRAP, TUBA1A, TUBB, SMG9, UPF1, PRKDC, POLR2E, NCBP1, LMNA, HSPA4, SMG8, PIH1D1, PABPC1, SMG1, PA

Protein Size: 456

---

Molecular Weight: 50 kDa

---

Gene ID: 8607

---

NCBI Accession: [NM\\_003707](#), [NP\\_003698](#)

---

UniProt: [Q9Y265](#)

---

Pathways: [Telomere Maintenance](#)

---

## Application Details

---

Application Notes: Optimal working dilutions should be determined experimentally by the investigator.

---

Comment: Antigen size: 456 AA

---

Restrictions: For Research Use only

---

## Handling

---

Format: Liquid

---

Concentration: Lot specific

---

Buffer: Liquid. Purified antibody supplied in 1x PBS buffer with 0.09 % (w/v) sodium azide and 2 % sucrose.

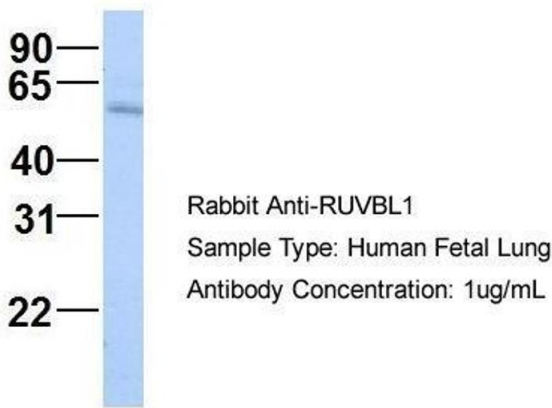
---

## Handling

Preservative:	Sodium azide
Precaution of Use:	This product contains Sodium azide: a POISONOUS AND HAZARDOUS SUBSTANCE which should be handled by trained staff only.
Handling Advice:	Avoid repeated freeze-thaw cycles.
Storage:	-20 °C
Storage Comment:	For short term use, store at 2-8°C up to 1 week. For long term storage, store at -20°C in small aliquots to prevent freeze-thaw cycles.

## Images

### RUVBL1



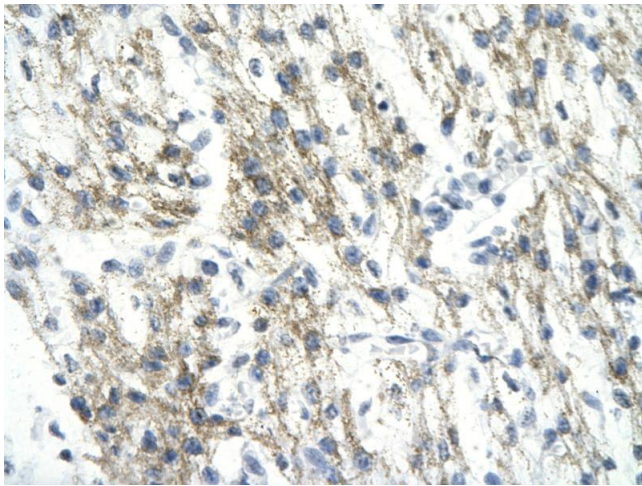
#### Western Blotting

**Image 1.** Host: Rabbit Target Name: RUVBL1 Sample Type: Human Fetal Lung Antibody Dilution: 1.0µg/ml



#### Western Blotting

**Image 2.** WB Suggested Anti-RUVBL1 Antibody Titration: 0.2-1 µg/ml Positive Control: Human heart



### Immunohistochemistry

**Image 3.** Rabbit Anti-RUVBL1 antibody Paraffin Embedded Tissue: Human Heart cell Cellular Data: cardiac cell of renal tubule Antibody Concentration: 4.0-8.0 ug/ml Magnification: 400X

Please check the [product details page](#) for more images. Overall 4 images are available for ABIN2779583.