

Datasheet for ABIN2779589
anti-TLE3 antibody (N-Term)[Go to Product page](#)

1 Image

Overview

Quantity:	100 µL
Target:	TLE3
Binding Specificity:	N-Term
Reactivity:	Human, Mouse, Rat, Dog, Cow, Rabbit, Zebrafish (Danio rerio), Guinea Pig, Horse, Pig
Host:	Rabbit
Clonality:	Polyclonal
Conjugate:	This TLE3 antibody is un-conjugated
Application:	Western Blotting (WB)

Product Details

Immunogen:	The immunogen is a synthetic peptide directed towards the N terminal region of human TLE3
Sequence:	GSSSGLLALG ALGSQAHLTV KDEKNHHELD HRERESSANN SVSPSESLRA
Predicted Reactivity:	Cow: 100%, Dog: 100%, Guinea Pig: 93%, Horse: 93%, Human: 100%, Mouse: 93%, Pig: 100%, Rabbit: 93%, Rat: 93%, Zebrafish: 79%
Characteristics:	This is a rabbit polyclonal antibody against TLE3. It was validated on Western Blot using a cell lysate as a positive control.
Purification:	Protein A purified

Target Details

Target:	TLE3
---------	------

Target Details

Alternative Name:	TLE3 (TLE3 Products)
Background:	<p>The TLE genes are differentially expressed and encode nuclear proteins, consistent with the presence of sequence motifs associated with nuclear functions. These genes are the human homologues of Drosophila groucho, a member of the Notch signaling pathway which controls a number of different cell-fate choices in invertebrates and vertebrates.</p> <p>Alias Symbols: ESG, ESG3, GRG3, HsT18976</p> <p>Protein Interaction Partner: UBC, COPG1, COPZ1, TBC1D4, PIN1, KLC1, COPB1, ARCN1, NLK, UBD, SRXN1, SEC24A, AHCYL1, SSSCA1, ALYREF, UBA2, S100A9, PPM1G, IGBP1, APP, HINFP, tcf7l1a, lnx2b, NDRG1, CUL4B, SIX3, FOXG1, AES, SIX4,</p> <p>Protein Size: 772</p>
Molecular Weight:	83 kDa
Gene ID:	7090
NCBI Accession:	NM_005078 , NP_005069
UniProt:	Q04726
Pathways:	SARS-CoV-2 Protein Interactome

Application Details

Application Notes:	Optimal working dilutions should be determined experimentally by the investigator.
Comment:	Antigen size: 772 AA
Restrictions:	For Research Use only

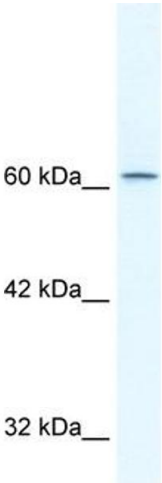
Handling

Format:	Liquid
Concentration:	Lot specific
Buffer:	Liquid. Purified antibody supplied in 1x PBS buffer with 0.09 % (w/v) sodium azide and 2 % sucrose.
Preservative:	Sodium azide
Precaution of Use:	This product contains Sodium azide: a POISONOUS AND HAZARDOUS SUBSTANCE which should be handled by trained staff only.
Handling Advice:	Avoid repeated freeze-thaw cycles.

Handling

Storage:	-20 °C
Storage Comment:	For short term use, store at 2-8°C up to 1 week. For long term storage, store at -20°C in small aliquots to prevent freeze-thaw cycles.

Images



Western Blotting

Image 1. WB Suggested Anti-TLE3 Antibody Titration:
2.5ug/ml Positive Control: HepG2 cell lysate