



Datasheet for ABIN2779592
anti-ATOH1 antibody (Middle Region)



[Go to Product page](#)

8 Images

Overview

Quantity:	100 µL
Target:	ATOH1
Binding Specificity:	Middle Region
Reactivity:	Human, Mouse, Rat, Dog, Cow, Pig, Rabbit, Horse
Host:	Rabbit
Clonality:	Polyclonal
Conjugate:	This ATOH1 antibody is un-conjugated
Application:	Western Blotting (WB), Immunohistochemistry (IHC)

Product Details

Immunogen:	The immunogen is a synthetic peptide directed towards the middle region of human ATOH1
Sequence:	QLDALHFSTF EDSALTAMMA QKNLSPSLPG SILQPVQEEN SKTSPRSHRS
Predicted Reactivity:	Cow: 92%, Dog: 85%, Horse: 85%, Human: 100%, Mouse: 92%, Pig: 92%, Rabbit: 83%, Rat: 77%
Characteristics:	This is a rabbit polyclonal antibody against ATOH1. It was validated on Western Blot using a cell lysate as a positive control.
Purification:	Affinity Purified

Target Details

Target:	ATOH1
Alternative Name:	ATOH1 (ATOH1 Products)

Target Details

Background: ATOH1 belongs to the basic helix-loop-helix (BHLH) family of transcription factors. It activates E-box dependent transcription along with E47. This protein belongs to the basic helix-loop-helix (BHLH) family of transcription factors. It activates E-box dependent transcription along with E47. Publication Note: This RefSeq record includes a subset of the publications that are available for this gene. Please see the Entrez Gene record to access additional publications.
Alias Symbols: ATH1, HATH1, MATH-1, bHLHa14
Protein Interaction Partner: HMGB1,
Protein Size: 354

Molecular Weight: 38 kDa

Gene ID: 474

NCBI Accession: [NM_005172](#), [NP_005163](#)

UniProt: [Q92858](#)

Application Details

Application Notes: Optimal working dilutions should be determined experimentally by the investigator.

Comment: Antigen size: 354 AA

Restrictions: For Research Use only

Handling

Format: Liquid

Concentration: Lot specific

Buffer: Liquid. Purified antibody supplied in 1x PBS buffer with 0.09 % (w/v) sodium azide and 2 % sucrose.

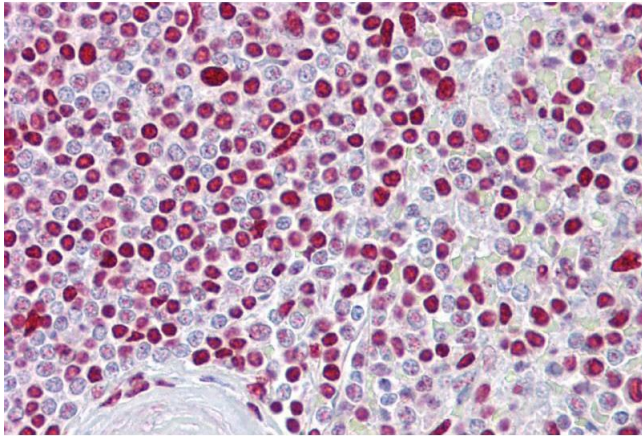
Preservative: Sodium azide

Precaution of Use: This product contains Sodium azide: a POISONOUS AND HAZARDOUS SUBSTANCE which should be handled by trained staff only.

Handling Advice: Avoid repeated freeze-thaw cycles.

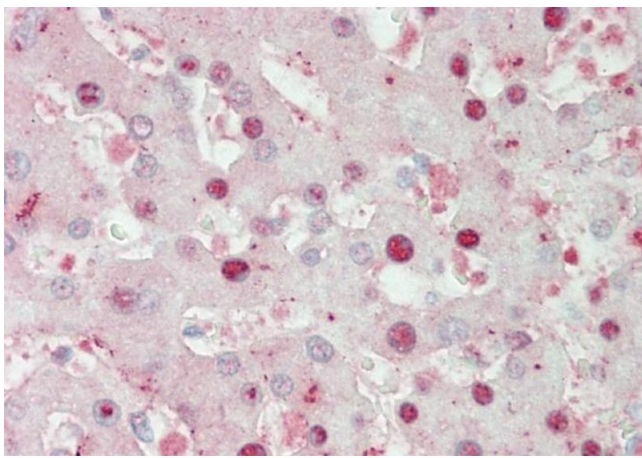
Storage: -20 °C

Storage Comment: For short term use, store at 2-8°C up to 1 week. For long term storage, store at -20°C in small aliquots to prevent freeze-thaw cycles.



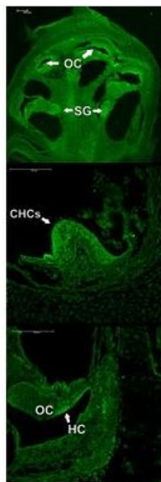
Immunohistochemistry

Image 1.



Immunohistochemistry

Image 2. Immunohistochemistry with Liver cell lysate tissue



Immunohistochemistry

Image 3. mouse cochlea

Please check the [product details page](#) for more images. Overall 8 images are available for ABIN2779592.