

Datasheet for ABIN2779593  
**anti-GLI1 antibody (C-Term)**

5 Images

8 Publications

[Go to Product page](#)

## Overview

|                      |  |
|----------------------|--|
| Quantity:            | 100 µL   |
| Target:              | GLI1   |
| Binding Specificity: | C-Term   |
| Reactivity:          | Human, Mouse, Rat, Dog, Guinea Pig, Horse, Rabbit, Cow |
| Host:                | Rabbit   |
| Clonality:           | Polyclonal   |
| Conjugate:           | This GLI1 antibody is un-conjugated                    |
| Application:         | Western Blotting (WB)                                  |

## Product Details

|                       |  |
|-----------------------|--|
| Immunogen:            | The immunogen is a synthetic peptide directed towards the C terminal region of human GLI1                                      |
| Sequence:             | TNPSCGHPEV GRLGGGPALY PPPEGQVCNP LDSLDLDNTQ LDFVAILDEP   |
| Predicted Reactivity: | Cow: 100%, Dog: 100%, Guinea Pig: 100%, Horse: 100%, Human: 100%, Mouse: 93%, Rabbit: 100%, Rat: 100%                          |
| Characteristics:      | This is a rabbit polyclonal antibody against GLI1. It was validated on Western Blot using a cell lysate as a positive control. |
| Purification:         | Protein A purified   |

## Target Details

|         |      |
|---------|------|
| Target: | GLI1 |
|---------|------|

## Target Details

|                   |   |
|-------------------|---|
| Alternative Name: | GLI1 ( <a href="#">GLI1 Products</a> )  |
| Background:       | <p>GLI1 is a protein which is a member of the Kruppel family of zinc finger proteins. The function of this gene has not been determined, however, it may play a role in normal development gene transcription. Mouse mutation studies indicate possible involvement in human foregut malformation.</p> <p>Alias Symbols: GLI</p> <p>Protein Interaction Partner: TRIM42, GCC1, PRKAA2, VHL, FEM1B, CDK4, UBC, MYC, ITCH, NUMB, SUFU, RAI1, XBP1, HDAC2, HDAC1, STK36, DYRK1A, ZIC2, ZIC1, Sin3a, Shh, SAP18, Su(fu), Pias1,</p> <p>Protein Size: 1106</p> |
| Molecular Weight: | 118 kDa   |
| Gene ID:          | 2735  |
| NCBI Accession:   | <a href="#">NM_005269</a> , <a href="#">NP_005260</a>   |
| UniProt:          | <a href="#">P08151</a>  |
| Pathways:         | <a href="#">Hedgehog Signaling</a> , <a href="#">Dopaminergic Neurogenesis</a>  |

## Application Details

|                    |  |
|--------------------|--|
| Application Notes: | Optimal working dilutions should be determined experimentally by the investigator. |
| Comment:           | Antigen size: 1106 AA  |
| Restrictions:      | For Research Use only  |

## Handling

|                    |  |
|--------------------|--|
| Format:            | Liquid   |
| Concentration:     | Lot specific   |
| Buffer:            | Liquid. Purified antibody supplied in 1x PBS buffer with 0.09 % (w/v) sodium azide and 2 % sucrose.                    |
| Preservative:      | Sodium azide   |
| Precaution of Use: | This product contains Sodium azide: a POISONOUS AND HAZARDOUS SUBSTANCE which should be handled by trained staff only. |
| Handling Advice:   | Avoid repeated freeze-thaw cycles.   |

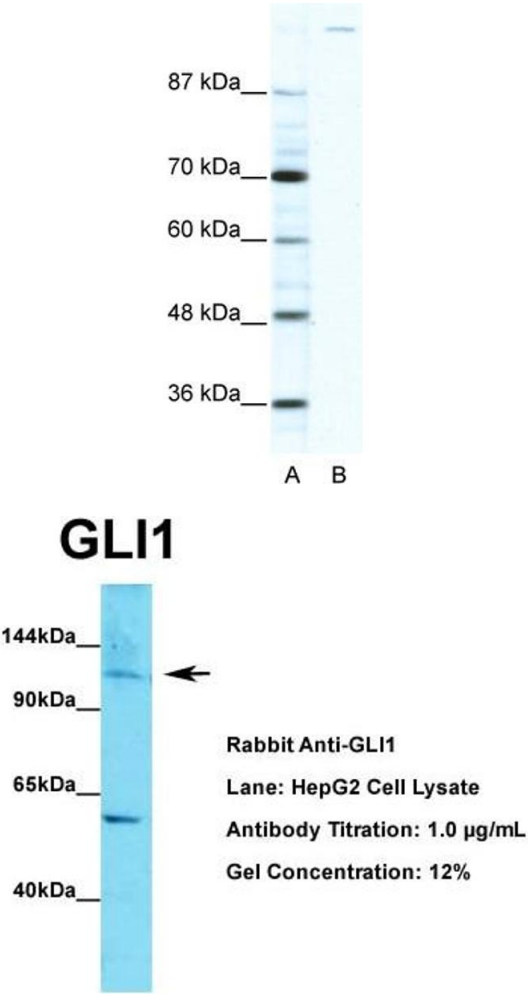
Handling

|                  |   |
|------------------|---|
| Storage:         | -20 °C  |
| Storage Comment: | For short term use, store at 2-8°C up to 1 week. For long term storage, store at -20°C in small aliquots to prevent freeze-thaw cycles. |

Publications

|                   |   |
|-------------------|---|
| Product cited in: | Zhang, Muralimanoharan, Wortman, Mendelson: "Primate-specific miR-515 family members inhibit key genes in human trophoblast differentiation and are upregulated in preeclampsia." in: <b>Proceedings of the National Academy of Sciences of the United States of America</b> , (2016) ( <a href="#">PubMed</a> ). |
|                   | There are more publications referencing this product on: <a href="#">Product page</a>   |

Images

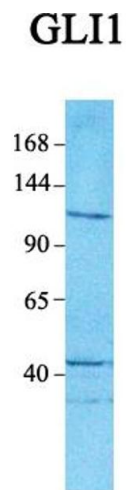


Western Blotting

**Image 1.** WB Suggested Anti-GLI1 Antibody Titration: 2.5ug/ml Positive Control: HepG2 cell lysate

Western Blotting

**Image 2.** WB Suggested Anti-GLI1 Antibody Titration: 1.0 µg/mL Positive Control: HepG2 cell lysate



Western Blotting

**Image 3.** Host: Rabbit Target Name: GLI1 Sample Tissue:  
Human Jurkat Antibody Dilution: 1.0ug/ml

Please check the [product details page](#) for more images. Overall 5 images are available for ABIN2779593.