

Datasheet for ABIN2779594
anti-SIX3 antibody (N-Term)



[Go to Product page](#)

1 Image

Overview

Quantity:	100 µL
Target:	SIX3
Binding Specificity:	N-Term
Reactivity:	Human, Mouse, Rat, Cow, Dog
Host:	Rabbit
Clonality:	Polyclonal
Conjugate:	This SIX3 antibody is un-conjugated
Application:	Western Blotting (WB)

Product Details

Immunogen:	The immunogen is a synthetic peptide directed towards the N terminal region of human SIX3
Sequence:	VFRSPLDLYS SHFLLPNFAD SHHRSILLAS SGGGNGAGGG GGAGGGSGGG
Predicted Reactivity:	Cow: 93%, Dog: 86%, Human: 100%, Mouse: 86%, Rat: 86%
Characteristics:	This is a rabbit polyclonal antibody against SIX3. It was validated on Western Blot using a cell lysate as a positive control.
Purification:	Affinity Purified

Target Details

Target:	SIX3
Alternative Name:	SIX3 (SIX3 Products)

Target Details

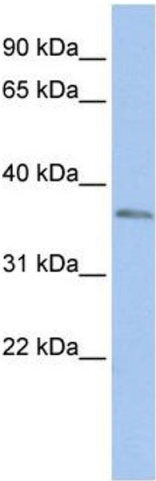
Background:	SIX3 belongs to the SIX/Sine oculis homeobox family. It contains 1 homeobox DNA-binding domain. SIX3 may be involved in visual system development. Alias Symbols: HPE2 Protein Interaction Partner: MTA1, GMNN, PAX6, EYA1, NR4A3, TLE3, TLE1, AES, Protein Size: 332
Molecular Weight:	35 kDa
Gene ID:	6496
NCBI Accession:	NM_005413 , NP_005404
UniProt:	O95343
Pathways:	Protein targeting to Nucleus

Application Details

Application Notes:	Optimal working dilutions should be determined experimentally by the investigator.
Comment:	Antigen size: 332 AA
Restrictions:	For Research Use only

Handling

Format:	Liquid
Concentration:	Lot specific
Buffer:	Liquid. Purified antibody supplied in 1x PBS buffer with 0.09 % (w/v) sodium azide and 2 % sucrose.
Preservative:	Sodium azide
Precaution of Use:	This product contains Sodium azide: a POISONOUS AND HAZARDOUS SUBSTANCE which should be handled by trained staff only.
Handling Advice:	Avoid repeated freeze-thaw cycles.
Storage:	-20 °C
Storage Comment:	For short term use, store at 2-8°C up to 1 week. For long term storage, store at -20°C in small aliquots to prevent freeze-thaw cycles.



Western Blotting

Image 1. WB Suggested Anti-SIX3 Antibody Titration: 0.2-1 ug/ml ELISA Titer: 1:62500 Positive Control: HepG2 cell lysate