



[Go to Product page](#)

Datasheet for ABIN2779598
anti-LHX1 antibody (N-Term)

1 Image

1 Publication

Overview

Quantity:	100 µL
Target:	LHX1
Binding Specificity:	N-Term
Reactivity:	Human, Mouse, Rat, Cow, Dog, Guinea Pig, Horse, Rabbit
Host:	Rabbit
Clonality:	Polyclonal
Conjugate:	This LHX1 antibody is un-conjugated
Application:	Western Blotting (WB)

Product Details

Immunogen:	The immunogen is a synthetic peptide directed towards the N terminal region of human LHX1
Sequence:	SNSSVAKENS LHSATTGSDP SLSPDSQDPS QDDAKDSESA NVSDKEAGSN
Predicted Reactivity:	Cow: 100%, Dog: 100%, Guinea Pig: 100%, Horse: 100%, Human: 100%, Mouse: 100%, Rabbit: 100%, Rat: 100%
Characteristics:	This is a rabbit polyclonal antibody against LHX1. It was validated on Western Blot using a cell lysate as a positive control.
Purification:	Affinity Purified

Target Details

Target:	LHX1
---------	------

Target Details

Alternative Name:	LHX1 (LHX1 Products)
Background:	<p>LHX1 is a member of a large protein family which contains the LIM domain, a unique cysteine-rich zinc-binding domain. It may function as a transcriptional regulator and be involved in control of differentiation and development of neural and lymphoid cells.</p> <p>Alias Symbols: LIM1, LIM-1</p> <p>Protein Interaction Partner: ISL1, RLIM, LHX3, OTX2, FOXA2,</p> <p>Protein Size: 406</p>
Molecular Weight:	45 kDa
Gene ID:	3975
NCBI Accession:	NM_005568 , NP_005559
UniProt:	P48742

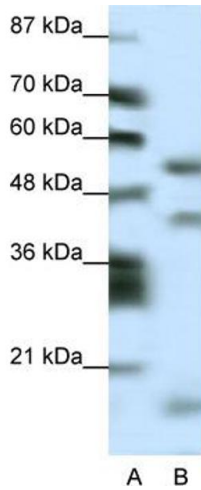
Application Details

Application Notes:	Optimal working dilutions should be determined experimentally by the investigator.
Comment:	Antigen size: 406 AA
Restrictions:	For Research Use only

Handling

Format:	Liquid
Concentration:	Lot specific
Buffer:	Liquid. Purified antibody supplied in 1x PBS buffer with 0.09 % (w/v) sodium azide and 2 % sucrose.
Preservative:	Sodium azide
Precaution of Use:	This product contains Sodium azide: a POISONOUS AND HAZARDOUS SUBSTANCE which should be handled by trained staff only.
Handling Advice:	Avoid repeated freeze-thaw cycles.
Storage:	-20 °C
Storage Comment:	For short term use, store at 2-8°C up to 1 week. For long term storage, store at -20°C in small aliquots to prevent freeze-thaw cycles.

Product cited in: Sweetman, Münsterberg: "The vertebrate spalt genes in development and disease." in:
Developmental biology, Vol. 293, Issue 2, pp. 285-93, (2006) ([PubMed](#)).



Western Blotting

Image 1. WB Suggested Anti-LHX1 Antibody Titration: 0.2-1 ug/ml Positive Control: HepG2 cell lysate