

Datasheet for ABIN2779600
anti-RUVBL2 antibody (N-Term)

5 Images

[Go to Product page](#)

Overview

Quantity:	100 µL
Target:	RUVBL2
Binding Specificity:	N-Term
Reactivity:	Human, Mouse, Rat, Dog, Cow, Guinea Pig, Horse, Rabbit, Zebrafish (Danio rerio), Saccharomyces cerevisiae
Host:	Rabbit
Clonality:	Polyclonal
Conjugate:	This RUVBL2 antibody is un-conjugated
Application:	Western Blotting (WB), Immunohistochemistry (IHC)

Product Details

Immunogen:	The immunogen is a synthetic peptide directed towards the N terminal region of human RUVBL2
Sequence:	IERIGAHSHI RGLGLDDALE PRQASQGMVG QLAARRAAGV VLEMIREGKI
Predicted Reactivity:	Cow: 100%, Dog: 100%, Guinea Pig: 100%, Horse: 100%, Human: 100%, Mouse: 100%, Rabbit: 100%, Rat: 100%, Yeast: 79%, Zebrafish: 93%
Characteristics:	This is a rabbit polyclonal antibody against RUVBL2. It was validated on Western Blot and immunohistochemistry.
Purification:	Protein A purified

Target Details

Target:	RUVBL2
Alternative Name:	RUVBL2 (RUVBL2 Products)
Background:	<p>RuvB-Like 2 (48- kDa TATA box-binding protein-interacting protein, Reptin 52, RUVBL2) is the second human homologue of the bacterial RuvB gene. Bacterial RuvB protein is a DNA helicase essential for homologous recombination and DNA double-strand break repair. Functional analysis showed that this protein has both ATPase and DNA helicase activities. This gene is physically linked to the CGB/LHB gene cluster on chromosome 19q13.3, and is very close (55 nt) to the LHB gene, in the opposite orientation.</p> <p>Alias Symbols: RVB2, TIH2, ECP51, TIP48, CGI-46, INO80J, REPTIN, TIP49B</p> <p>Protein Interaction Partner: CCDC103, LNX1, RUVBL1, UBC, DPCD, HUWE1, VCP, SUMO2, RPAP3, MDM2, RPA3, RPA2, RPA1, SUZ12, EED, RNF2, BMI1, CDKN2A, ASNA1, PPP6R3, PLA2G4A, PARK2, FBXO6, TARDBP, YWHAQ, PPP6R2, EXOSC10, BAG3, POLR2E, UPF1, SMG1, RBM8A, TTI1, PAN2, TBP, CTNNB1, STOM, RUVBL</p> <p>Protein Size: 463</p>
Molecular Weight:	51 kDa
Gene ID:	10856
NCBI Accession:	NM_006666 , NP_006657
UniProt:	Q9Y230
Pathways:	Telomere Maintenance

Application Details

Application Notes:	Optimal working dilutions should be determined experimentally by the investigator.
Comment:	Antigen size: 463 AA
Restrictions:	For Research Use only

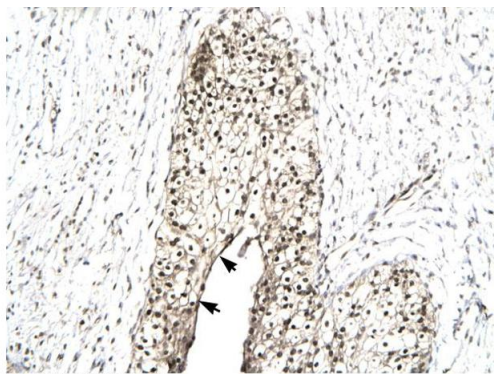
Handling

Format:	Liquid
Concentration:	Lot specific
Buffer:	Liquid. Purified antibody supplied in 1x PBS buffer with 0.09 % (w/v) sodium azide and 2 % sucrose.
Preservative:	Sodium azide

Handling

Precaution of Use:	This product contains Sodium azide: a POISONOUS AND HAZARDOUS SUBSTANCE which should be handled by trained staff only.
Handling Advice:	Avoid repeated freeze-thaw cycles.
Storage:	-20 °C
Storage Comment:	For short term use, store at 2-8°C up to 1 week. For long term storage, store at -20°C in small aliquots to prevent freeze-thaw cycles.

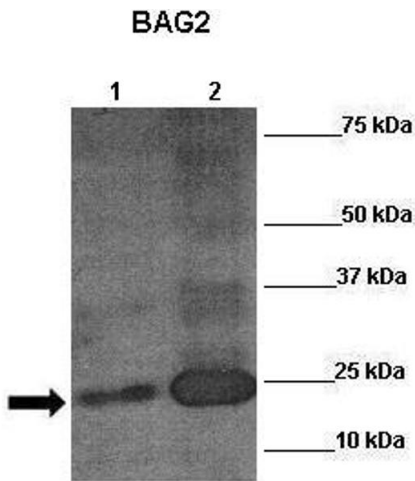
Images



Rabbit Anti-RUVBL2 Antibody
Catalog Number: ARP32378
Lot Number: QC1856
Paraffin Embedded Tissue: Human Urinary bladder
Cells with Positive label: Epithelial cells (Indicated with Arrows)
Antibody Concentration: 4.0-8.0 µg/ml
Magnification: 400X

Immunohistochemistry

Image 1. Human urinary bladder



Western Blotting

Image 2. Sample Type: Lane 1:241 µg untransfected H1299 cells
Lane 2: 041 µg siRUVBL2 transfected H1299 cells

Primary Antibody Dilution: 1:0000

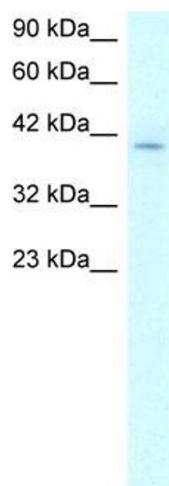
Secondary Antibody: Anti-rabbit-HRP

Secondary Antibody Dilution: 1:0000 Color/Signal

Descriptions: RUVBL2

Gene Name: Wenwei Hu, Xuetian Yue, Rutgers Cancer
Institute of New Jersey.

Submitted by:



Western Blotting

Image 3. WB Suggested Anti-RUVBL2 Antibody Titration: 2.0-4.0ug/ml Positive Control: Daudi cell lysate RUVBL2 is supported by BioGPS gene expression data to be expressed in Daudi

Please check the [product details page](#) for more images. Overall 5 images are available for ABIN2779600.