

Datasheet for ABIN2779602  
**anti-TLE4 antibody (N-Term)**[Go to Product page](#)

## 2 Images

## Overview

Quantity:	100 µL
Target:	TLE4
Binding Specificity:	N-Term
Reactivity:	Human, Rat, Mouse, Guinea Pig, Horse, Rabbit, Cow, Dog
Host:	Rabbit
Clonality:	Polyclonal
Conjugate:	This TLE4 antibody is un-conjugated
Application:	Western Blotting (WB), Immunohistochemistry (IHC)

## Product Details

Immunogen:	The immunogen is a synthetic peptide directed towards the N terminal region of human TLE4
Sequence:	GAEKHRNSAD YSSESKKQKT EEKEIAARYD SDGEKSDDNL VVDVSNEDPS
Predicted Reactivity:	Cow: 93%, Dog: 100%, Guinea Pig: 100%, Horse: 100%, Human: 100%, Mouse: 100%, Rabbit: 100%, Rat: 100%
Characteristics:	This is a rabbit polyclonal antibody against TLE4. It was validated on Western Blot using a cell lysate as a positive control.
Purification:	Affinity Purified

## Target Details

Target:	TLE4
---------	------

## Target Details

Alternative Name:	TLE4 ( <a href="#">TLE4 Products</a> )
Background:	<p>TLE4 is the transcriptional corepressor that binds to a number of transcription factors. It inhibits the transcriptional activation mediated by PAX5, and by CTNNB1 and TCF family members in Wnt signaling. The effects of full-length TLE family members may be modulated by association with dominant-negative AES.</p> <p>Alias Symbols: BCE-1, E(spl), ESG, ESG4, GRG4, BCE1</p> <p>Protein Interaction Partner: SRPK2, POU2F2, UBC, LIG4, BRCA1, WDR77, PRMT5, PPM1B, CUX1, OTX1, OTX2, TLE4, PAX5, POU2F1, MSX1, HDAC1,</p> <p>Protein Size: 773</p>
Molecular Weight:	84 kDa
Gene ID:	7091
NCBI Accession:	<a href="#">NM_007005</a> , <a href="#">NP_008936</a>
UniProt:	<a href="#">Q04727</a>
Pathways:	<a href="#">WNT Signaling</a>

## Application Details

Application Notes:	Optimal working dilutions should be determined experimentally by the investigator.
Comment:	Antigen size: 773 AA
Restrictions:	For Research Use only

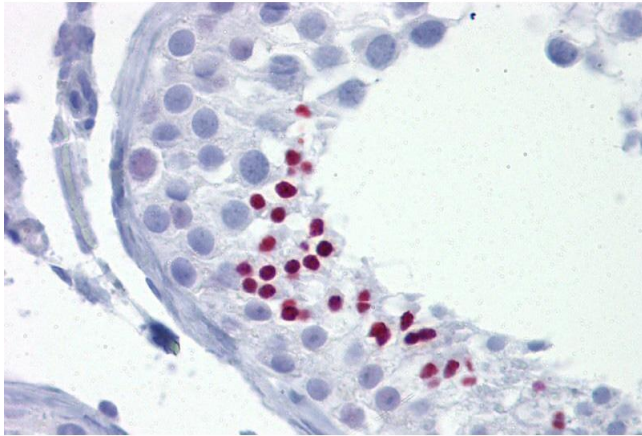
## Handling

Format:	Liquid
Concentration:	Lot specific
Buffer:	Liquid. Purified antibody supplied in 1x PBS buffer with 0.09 % (w/v) sodium azide and 2 % sucrose.
Preservative:	Sodium azide
Precaution of Use:	This product contains Sodium azide: a POISONOUS AND HAZARDOUS SUBSTANCE which should be handled by trained staff only.
Handling Advice:	Avoid repeated freeze-thaw cycles.
Storage:	-20 °C

## Handling

Storage Comment: For short term use, store at 2-8°C up to 1 week. For long term storage, store at -20°C in small aliquots to prevent freeze-thaw cycles.

## Images



### Immunohistochemistry

**Image 1.** Immunohistochemistry with Testis tissue at an antibody concentration of 5µg/ml using anti-TLE4 antibody (ARP32381\_P050)



### Western Blotting

**Image 2.** WB Suggested Anti-TLE4 Antibody Titration: 0.2-1 ug/ml ELISA Titer: 1:62500 Positive Control: THP-1 cell lysate