

Datasheet for ABIN2779603

**anti-SIX Homeobox 6 antibody (N-Term)**[Go to Product page](#)**2** Images

## Overview

Quantity:	100 µL
Target:	SIX Homeobox 6 (SIX6)
Binding Specificity:	N-Term
Reactivity:	Human, Mouse, Rat, Dog, Cow, Guinea Pig, Horse, Rabbit, Sheep, Zebrafish (Danio rerio)
Host:	Rabbit
Clonality:	Polyclonal
Conjugate:	This SIX Homeobox 6 antibody is un-conjugated
Application:	Western Blotting (WB), Immunohistochemistry (IHC)

## Product Details

Immunogen:	The immunogen is a synthetic peptide directed towards the N terminal region of human SIX6
Sequence:	PAACEALNKN ESVLRARAIV AFHGGNYREL YHILENHKFT KESHAKLQAL
Predicted Reactivity:	Cow: 100%, Dog: 100%, Guinea Pig: 100%, Horse: 100%, Human: 100%, Mouse: 100%, Rabbit: 100%, Rat: 100%, Sheep: 100%, Zebrafish: 86%
Characteristics:	This is a rabbit polyclonal antibody against SIX6. It was validated on Western Blot and immunohistochemistry.
Purification:	Affinity Purified

## Target Details

Target:	SIX Homeobox 6 (SIX6)
---------	-----------------------

## Target Details

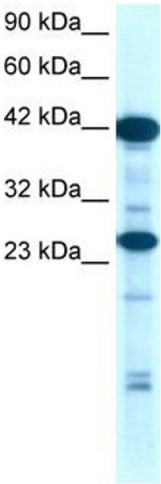
Alternative Name:	SIX6 ( <a href="#">SIX6 Products</a> )
Background:	<p>SIX6 is a member of SIX family. It is the homologue of the chick Six6(Optx2) gene. SIX6 is closely related to SIX3 and is expressed in the developing and adult human retina.</p> <p>Alias Symbols: Six9, OPTX2, MCOPCT2</p> <p>Protein Interaction Partner: UBC, GTF2A1L, TLE1, AES,</p> <p>Protein Size: 246</p>
Molecular Weight:	28 kDa
Gene ID:	4990
NCBI Accession:	<a href="#">NM_007374</a> , <a href="#">NP_031400</a>
UniProt:	<a href="#">O95475</a>

## Application Details

Application Notes:	Optimal working dilutions should be determined experimentally by the investigator.
Comment:	Antigen size: 246 AA
Restrictions:	For Research Use only

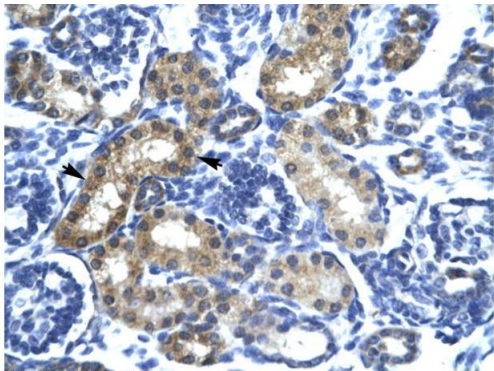
## Handling

Format:	Liquid
Concentration:	Lot specific
Buffer:	Liquid. Purified antibody supplied in 1x PBS buffer with 0.09 % (w/v) sodium azide and 2 % sucrose.
Preservative:	Sodium azide
Precaution of Use:	This product contains Sodium azide: a POISONOUS AND HAZARDOUS SUBSTANCE which should be handled by trained staff only.
Handling Advice:	Avoid repeated freeze-thaw cycles.
Storage:	-20 °C
Storage Comment:	For short term use, store at 2-8°C up to 1 week. For long term storage, store at -20°C in small aliquots to prevent freeze-thaw cycles.



Western Blotting

**Image 1.** WB Suggested Anti-SIX6 Antibody Titration: 0.2-1 ug/ml Positive Control: Jurkat cell lysate



Immunohistochemistry

**Image 2.** Human kidney

Rabbit Anti-SIX6 Antibody  
Catalog Number: ARP32383  
Lot Number: QC1859  
Paraffin Embedded Tissue: Human Kidney  
Cells with Positive label: Epithelial cells of renal tubule (Indicated with Arrows)  
Antibody Concentration: 4.0-8.0 µg/ml  
Magnification: 400X