

Datasheet for ABIN2779615
anti-PAX7 antibody (N-Term)

5 Images

1 Publication

[Go to Product page](#)

Overview

| | |
|----------------------|--|
| Quantity: | 100 µL |
| Target: | PAX7 |
| Binding Specificity: | N-Term |
| Reactivity: | Human, Mouse, Rat, Zebrafish (Danio rerio), Dog, Guinea Pig, Cow, Rabbit |
| Host: | Rabbit |
| Clonality: | Polyclonal |
| Conjugate: | This PAX7 antibody is un-conjugated |
| Application: | Western Blotting (WB), Immunohistochemistry (IHC) |

Product Details

| | |
|-----------------------|---|
| Immunogen: | The immunogen is a synthetic peptide directed towards the N terminal region of human PAX7 |
| Sequence: | KEEEDADKK EDDGEKKAKH SIDGILGDKG NRLDEGSDVE SEPDLPKRRK |
| Predicted Reactivity: | Cow: 100%, Dog: 100%, Guinea Pig: 100%, Human: 100%, Mouse: 100%, Rabbit: 100%, Rat: 100%, Zebrafish: 93% |
| Characteristics: | This is a rabbit polyclonal antibody against PAX7. It was validated on Western Blot and immunohistochemistry. |
| Purification: | Affinity Purified |

Target Details

| | |
|---------|------|
| Target: | PAX7 |
|---------|------|

Target Details

| | |
|-------------------|---|
| Alternative Name: | PAX7 (PAX7 Products) |
| Background: | <p>PAX7 is a member of the paired box (PAX) family of transcription factors. Members of this gene family typically contain a paired box domain, an octapeptide, and a paired-type homeodomain. These genes play critical roles during fetal development and cancer growth. The specific function of the paired box gene 7 is unknown but speculated to involve tumor suppression since fusion of this gene with a forkhead domain family member has been associated with alveolar rhabdomyosarcoma. Alternative splicing in this gene has produced two known products but the biological significance of the variants is unknown.</p> <p>Alias Symbols: HUP1, RMS2, PAX7B</p> <p>Protein Interaction Partner: TRIM27, MYOD1, Dlg4, WDR5, ASH2L, HIRA, Ubc,</p> <p>Protein Size: 520</p> |
| Molecular Weight: | 57 kDa |
| Gene ID: | 5081 |
| NCBI Accession: | NM_002584 , NP_002575 |
| UniProt: | P23759 |

Application Details

| | |
|--------------------|--|
| Application Notes: | Optimal working dilutions should be determined experimentally by the investigator. |
| Comment: | Antigen size: 520 AA |
| Restrictions: | For Research Use only |

Handling

| | |
|--------------------|--|
| Format: | Liquid |
| Concentration: | Lot specific |
| Buffer: | Liquid. Purified antibody supplied in 1x PBS buffer with 0.09 % (w/v) sodium azide and 2 % sucrose. |
| Preservative: | Sodium azide |
| Precaution of Use: | This product contains Sodium azide: a POISONOUS AND HAZARDOUS SUBSTANCE which should be handled by trained staff only. |
| Handling Advice: | Avoid repeated freeze-thaw cycles. |

Handling

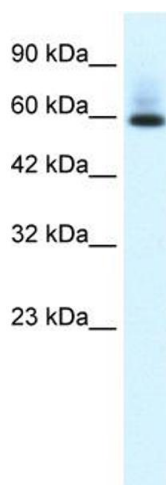
Storage: -20 °C

Storage Comment: For short term use, store at 2-8°C up to 1 week. For long term storage, store at -20°C in small aliquots to prevent freeze-thaw cycles.

Publications

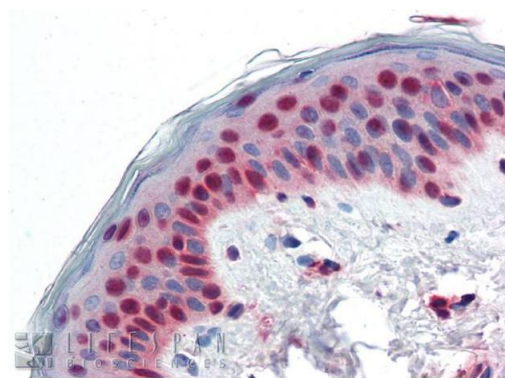
Product cited in: Nishimura, Mitne-Neto, Silva, Oliveira, Vainzof, Zatz: "A novel locus for late onset amyotrophic lateral sclerosis/motor neurone disease variant at 20q13." in: **Journal of medical genetics**, Vol. 41, Issue 4, pp. 315-20, (2004) ([PubMed](#)).

Images



Western Blotting

Image 1. WB Suggested Anti-PAX7 Antibody Titration: 0.05ug/ml Positive Control: Jurkat cell lysate

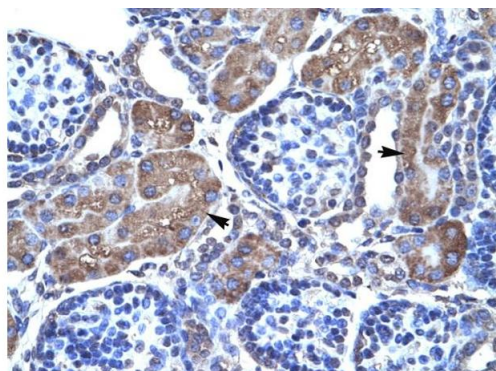


Rabbit Anti-PAX7 Antibody
Catalog Number: ARP32393
Lot Number: QC1867
Paraffin Embedded Tissue: Human Skin
Antibody Concentration: 5.0 µg/ml

Data courtesy of Lifespan Biosciences, Inc.

Immunohistochemistry

Image 2. Immunohistochemistry with Human Skin lysate tissue at an antibody concentration of 5.0ug/ml using anti-PAX7 antibody



Rabbit Anti-PAX7 Antibody
Catalog Number: ARP32393
Lot Number: QC1867
Paraffin Embedded Tissue: Human Kidney
Cells with Positive label: Epithelial cells of renal tubule (Indicated with Arrows)
Antibody Concentration: 4.0-8.0 µg/ml
Magnification: 400X

Immunohistochemistry

Image 3. Rabbit Anti-PAX7 Antibody Paraffin Embedded
Tissue: Human Kidney Cellular Data: Epithelial cells of renal
tubule Antibody Concentration: 4.0-8.0 ug/ml Magnification:
400X

Please check the [product details page](#) for more images. Overall 5 images are available for ABIN2779615.