

Datasheet for ABIN2779619
anti-TAB2 antibody (N-Term)[Go to Product page](#)

4 Images

1 Publication

Overview

Quantity:	100 µL
Target:	TAB2
Binding Specificity:	N-Term
Reactivity:	Human, Mouse, Rat, Dog, Cow, Rabbit, Guinea Pig, Horse
Host:	Rabbit
Clonality:	Polyclonal
Conjugate:	This TAB2 antibody is un-conjugated
Application:	Western Blotting (WB), Immunohistochemistry (IHC)

Product Details

Immunogen:	The immunogen is a synthetic peptide directed towards the N terminal region of human MAP3K7IP2
Sequence:	QKFPEVPEVV VSRCMLQNNN NLDACCAVLS QESTRYLYGE GDLNFSDDSG
Predicted Reactivity:	Cow: 100%, Dog: 100%, Guinea Pig: 100%, Horse: 100%, Human: 100%, Mouse: 100%, Rabbit: 100%, Rat: 100%
Characteristics:	This is a rabbit polyclonal antibody against MAP3K7IP2. It was validated on Western Blot and immunohistochemistry.
Purification:	Affinity Purified

Target Details

Target:	TAB2
---------	------

Target Details

Alternative Name:	MAP3K7IP2 (TAB2 Products)
Background:	<p>MAP3K7IP2 is an activator of MAP3K7/TAK1, which is required for for the IL-1 induced activation of NF-κB and MAPK8/JNK. This protein forms a kinase complex with TRAF6, MAP3K7 and TAB1, thus serving as an adaptor linking MAP3K7 and TRAF6. This protein, TAB1, and MAP3K7 also participate in the signal transduction induced by TNFSF11/RANKI through the activation of the receptor activator of NF-κB (TNFRSF11A/RANK), which may regulate the development and function of osteoclasts.</p> <p>Alias Symbols: CHTD2, MAP3K7IP2</p> <p>Protein Interaction Partner: UBC, PIAS3, UBE2I, TRAF6, SUMO2, IRAK1, MAP3K7, TRIM38, SIK1, SIK3, TRIM22, NPM1, CST9L, SLC19A3, env, TAB1, NUMBL, IKBKG, FOSL1, ZBTB16, YWHAZ, VIM, TGM2, PPP2CB, IKBKB, GTF2I, FN1, HSP90AA1, BST2, MALT1, WDR34, APP, ESR1, MAP3K8, AR, TRIM5, TBL1XR1, MBD</p> <p>Protein Size: 693</p>
Molecular Weight:	76 kDa
Gene ID:	23118
NCBI Accession:	NM_015093 , NP_055908
UniProt:	Q9NYJ8
Pathways:	TCR Signaling , TLR Signaling , Fc-epsilon Receptor Signaling Pathway , Activation of Innate immune Response , Toll-Like Receptors Cascades , Ubiquitin Proteasome Pathway

Application Details

Application Notes:	Optimal working dilutions should be determined experimentally by the investigator.
Comment:	Antigen size: 693 AA
Restrictions:	For Research Use only

Handling

Format:	Liquid
Concentration:	Lot specific
Buffer:	Liquid. Purified antibody supplied in 1x PBS buffer with 0.09 % (w/v) sodium azide and 2 % sucrose.
Preservative:	Sodium azide

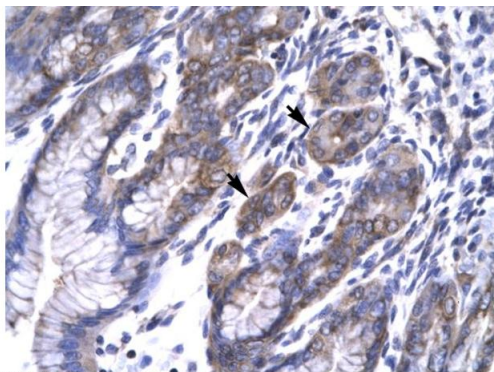
Handling

Precaution of Use:	This product contains Sodium azide: a POISONOUS AND HAZARDOUS SUBSTANCE which should be handled by trained staff only.
Handling Advice:	Avoid repeated freeze-thaw cycles.
Storage:	-20 °C
Storage Comment:	For short term use, store at 2-8°C up to 1 week. For long term storage, store at -20°C in small aliquots to prevent freeze-thaw cycles.

Publications

Product cited in:	Holmberg, Ingner, Johansson, Leander, Hjalt: "PITX2 gain-of-function induced defects in mouse forelimb development." in: BMC developmental biology , Vol. 8, pp. 25, (2008) (PubMed).
-------------------	--

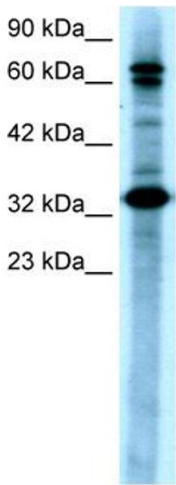
Images



Rabbit Anti-MAP3K7IP2 Antibody
Catalog Number: ARP32402
Lot Number: QC1874
Paraffin Embedded Tissue: Human Stomach
Cells with Positive label: Epithelial Cells of Fundic Gland (Indicated with Arrows)
Antibody Concentration: 4.0-8.0 µg/ml
Magnification: 400X

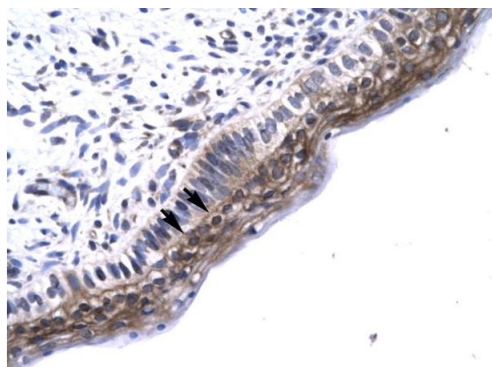
Immunohistochemistry

Image 1. Human Stomach



Western Blotting

Image 2. WB Suggested Anti-MAP3K7IP2 Antibody
Titration: 0.2-1 ug/ml Positive Control: HepG2 cell lysate
TAB2 is strongly supported by BioGPS gene expression data to be expressed in Human HepG2 cells



Rabbit Anti-MAP3K7IP2 Antibody
Catalog Number: ARP32402
Lot Number: QC1874
Paraffin Embedded Tissue: Human Spermatophore
Cells with Positive label: Epithelial Cells (Indicated with Arrows)
Antibody Concentration: 4.0-8.0 µg/ml
Magnification: 400X

Immunohistochemistry

Image 3. Human Spermatophore

Please check the [product details page](#) for more images. Overall 4 images are available for ABIN2779619.