

Datasheet for ABIN2779643
anti-OTX2 antibody (N-Term)[Go to Product page](#)

6 Images

3 Publications

Overview

Quantity:	100 µL
Target:	OTX2
Binding Specificity:	N-Term
Reactivity:	Human, Rat, Mouse, Zebrafish (Danio rerio), Rabbit, Cow, Sheep, Dog, Horse, Guinea Pig
Host:	Rabbit
Clonality:	Polyclonal
Conjugate:	This OTX2 antibody is un-conjugated
Application:	Western Blotting (WB), Immunohistochemistry (IHC)

Product Details

Immunogen:	The immunogen is a synthetic peptide directed towards the N terminal region of human OTX2
Sequence:	PESRVQVWFK NRRAKCRQQQ QQQQNGGQNK VRPAKKKTSP AREVSSESGT
Predicted Reactivity:	Cow: 100%, Dog: 100%, Guinea Pig: 100%, Horse: 100%, Human: 100%, Mouse: 100%, Rabbit: 100%, Rat: 100%, Sheep: 100%, Zebrafish: 100%
Characteristics:	This is a rabbit polyclonal antibody against OTX2. It was validated on Western Blot and immunohistochemistry.
Purification:	Affinity Purified

Target Details

Target:	OTX2
---------	------

Target Details

Alternative Name:	OTX2 (OTX2 Products)
Background:	<p>Homeobox protein OTX2 is a member of the bicoid sub-family of homeodomain-containing transcription factors. This protein acts as a transcription factor and may play a role in brain and sensory organ development. A similar protein in mice is required for proper forebrain development. Two transcript variants encoding distinct isoforms have been identified for this gene. Other alternative splice variants may exist, but their full length sequences have not been determined. This gene encodes a member of the bicoid sub-family of homeodomain-containing transcription factors. The encoded protein acts as a transcription factor and may play a role in brain and sensory organ development. A similar protein in mice is required for proper forebrain development. Two transcript variants encoding distinct isoforms have been identified for this gene. Other alternative splice variants may exist, but their full length sequences have not been determined.</p> <p>Alias Symbols: MCOPS5, MGC45000, CPHD6</p> <p>Protein Interaction Partner: ATXN1, CDK4, APP, DMBX1, TLE4, FOXA2, MITF, OTX2, LHX1,</p> <p>Protein Size: 297</p>
Molecular Weight:	32 kDa
Gene ID:	5015
NCBI Accession:	NM_021728 , NP_068374
Pathways:	Dopaminergic Neurogenesis

Application Details

Application Notes:	Optimal working dilutions should be determined experimentally by the investigator.
Comment:	Antigen size: 297 AA
Restrictions:	For Research Use only

Handling

Format:	Liquid
Concentration:	Lot specific
Buffer:	Liquid. Purified antibody supplied in 1x PBS buffer with 0.09 % (w/v) sodium azide and 2 % sucrose.
Preservative:	Sodium azide

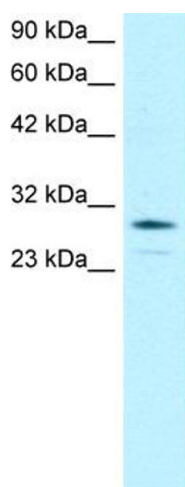
Handling

Precaution of Use:	This product contains Sodium azide: a POISONOUS AND HAZARDOUS SUBSTANCE which should be handled by trained staff only.
Handling Advice:	Avoid repeated freeze-thaw cycles.
Storage:	-20 °C
Storage Comment:	For short term use, store at 2-8°C up to 1 week. For long term storage, store at -20°C in small aliquots to prevent freeze-thaw cycles.

Publications

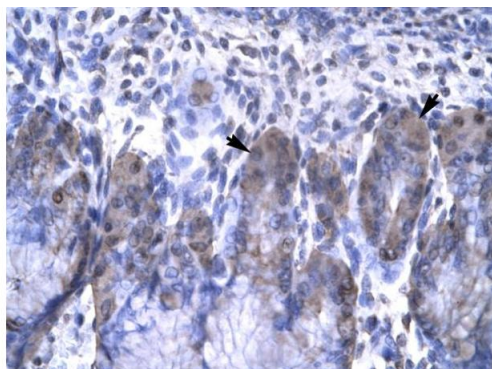
Product cited in:	Huang, Ma, Li, Yu, Zhang, Wei, Jin, Xu, Gao, Huang: "NF-κB1 inhibits c-Myc protein degradation through suppression of FBW7 expression." in: Oncotarget , Vol. 5, Issue 2, pp. 493-505, (2014) (PubMed).
-------------------	--

Images



Western Blotting

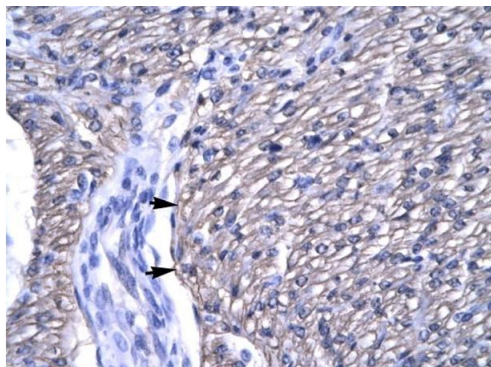
Image 1. WB Suggested Anti-OTX2 Antibody Titration: 0.2-1 ug/ml Positive Control: Jurkat cell lysate



Immunohistochemistry

Image 2. Human Stomach

Rabbit Anti-OTX2 Antibody
Catalog Number: ARP32439
Lot Number: QC1920
Paraffin Embedded Tissue: Human Stomach
Cells with Positive label: Epithelial cell of fundic gland (Indicated with Arrows)
Antibody Concentration: 4.0-8.0 µg/ml
Magnification: 400X



Rabbit Anti-OTX2 Antibody
Catalog Number: ARP32439
Lot Number: QC1920
Paraffin Embedded Tissue: Human Heart
Cells with Positive label: Myocardiac cells (Indicated with Arrows)
Antibody Concentration: 4.0-8.0 µg/ml
Magnification: 400X

Immunohistochemistry

Image 3. Human Heart

Please check the [product details page](#) for more images. Overall 6 images are available for ABIN2779643.