



[Go to Product page](#)

Datasheet for ABIN2779645  
**anti-LHX3 antibody (Middle Region)**

1 Image

### Overview

Quantity:	100 µL
Target:	LHX3
Binding Specificity:	Middle Region
Reactivity:	Human, Mouse, Rat, Dog, Horse, Cow, Zebrafish (Danio rerio), Guinea Pig, Pig
Host:	Rabbit
Clonality:	Polyclonal
Conjugate:	This LHX3 antibody is un-conjugated
Application:	Western Blotting (WB)

### Product Details

Immunogen:	The immunogen is a synthetic peptide directed towards the middle region of human LHX3
Sequence:	NMKRSRGGSK SDKDSVQEGQ DSDAEVSFPD EPSLAEMGPA NGLYGSLGEP
Predicted Reactivity:	Cow: 93%, Dog: 86%, Guinea Pig: 87%, Horse: 85%, Human: 100%, Mouse: 86%, Pig: 93%, Rat: 93%, Zebrafish: 92%
Characteristics:	This is a rabbit polyclonal antibody against LHX3. It was validated on Western Blot using a cell lysate as a positive control.
Purification:	Affinity Purified

### Target Details

Target:	LHX3
---------	------

## Target Details

---

Alternative Name: [LHX3 \(LHX3 Products\)](#)

Background: LHX3 is a member a large protein family which carry the LIM domain, a unique cysteine-rich zinc-binding domain. The encoded protein is a transcription factor that is required for pituitary development and motor neuron specification. Mutations in this gene have been associated with a syndrome of combined pituitary hormone deficiency and rigid cervical spine. Two transcripts variants encoding distinct isoforms have been identified for this gene.

Alias Symbols: DKFZp762A2013, M2-LHX3, LIM3, CPHD3

Protein Interaction Partner: ISL2, IFT172, LDB1, CITED2, ISL1, RLIM, LMX1A, LHX1,

Protein Size: 397

Molecular Weight: 43 kDa

Gene ID: 8022

NCBI Accession: [NM\\_178138](#), [NP\\_835258](#)

UniProt: [Q9UBR4](#)

## Application Details

---

Application Notes: Optimal working dilutions should be determined experimentally by the investigator.

Comment: Antigen size: 397 AA

Restrictions: For Research Use only

## Handling

---

Format: Liquid

Concentration: Lot specific

Buffer: Liquid. Purified antibody supplied in 1x PBS buffer with 0.09 % (w/v) sodium azide and 2 % sucrose.

Preservative: Sodium azide

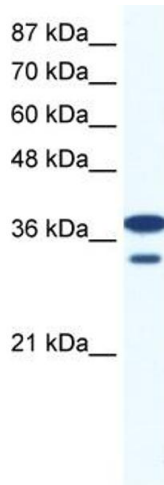
Precaution of Use: This product contains Sodium azide: a POISONOUS AND HAZARDOUS SUBSTANCE which should be handled by trained staff only.

Handling Advice: Avoid repeated freeze-thaw cycles.

Storage: -20 °C

Storage Comment: For short term use, store at 2-8°C up to 1 week. For long term storage, store at -20°C in small

aliquots to prevent freeze-thaw cycles.



#### Western Blotting

**Image 1.** WB Suggested Anti-LHX3 Antibody Titration: 0.2-1 ug/ml ELISA Titer: 1:312500 Positive Control: Jurkat cell lysate