



Datasheet for ABIN2779647  
**anti-LHX3 antibody (Middle Region)**



[Go to Product page](#)

1 Image

Overview

Quantity:	100 µL
Target:	LHX3
Binding Specificity:	Middle Region
Reactivity:	Human, Mouse, Rat, Dog, Horse, Cow, Zebrafish (Danio rerio), Guinea Pig, Goat
Host:	Rabbit
Clonality:	Polyclonal
Conjugate:	This LHX3 antibody is un-conjugated
Application:	Western Blotting (WB)

Product Details

Immunogen:	The immunogen is a synthetic peptide directed towards the middle region of human LHX3
Sequence:	PSGAPGGPPP MRVLAGNGPS SDLSTGSSGG YPDFPASPAS WLDEVDHAQF
Predicted Reactivity:	Cow: 100%, Dog: 100%, Goat: 100%, Guinea Pig: 100%, Horse: 100%, Human: 100%, Mouse: 86%, Rat: 100%, Zebrafish: 100%
Characteristics:	This is a rabbit polyclonal antibody against LHX3. It was validated on Western Blot using a cell lysate as a positive control.
Purification:	Affinity Purified

Target Details

Target:	LHX3
---------	------

## Target Details

---

Alternative Name: [LHX3 \(LHX3 Products\)](#)

---

Background: LHX3 encodes a member a large protein family which carry the LIM domain, a unique cysteine-rich zinc-binding domain. The encoded protein is a transcription factor that is required for pituitary development and motor neuron specification. Mutations in this gene have been associated with a syndrome of combined pituitary hormone deficiency and rigid cervical spine. This gene encodes a member a large protein family which carry the LIM domain, a unique cysteine-rich zinc-binding domain. The encoded protein is a transcription factor that is required for pituitary development and motor neuron specification. Mutations in this gene have been associated with a syndrome of combined pituitary hormone deficiency and rigid cervical spine. Two transcripts variants encoding distinct isoforms have been identified for this gene.

Alias Symbols: DKFZp762A2013, M2-LHX3, LIM3, CPHD3

Protein Interaction Partner: ISL2, IFT172, LDB1, CITED2, ISL1, RLIM, LMX1A, LHX1,

Protein Size: 402

---

Molecular Weight: 44 kDa

---

Gene ID: 8022

---

NCBI Accession: [NM\\_014564, NP\\_055379](#)

---

UniProt: [Q5TB40](#)

---

## Application Details

---

Application Notes: Optimal working dilutions should be determined experimentally by the investigator.

---

Comment: Antigen size: 402 AA

---

Restrictions: For Research Use only

---

## Handling

---

Format: Liquid

---

Concentration: Lot specific

---

Buffer: Liquid. Purified antibody supplied in 1x PBS buffer with 0.09 % (w/v) sodium azide and 2 % sucrose.

---

Preservative: Sodium azide

---

Precaution of Use: This product contains Sodium azide: a POISONOUS AND HAZARDOUS SUBSTANCE which should be handled by trained staff only.

---

## Handling

---

Handling Advice: Avoid repeated freeze-thaw cycles.

---

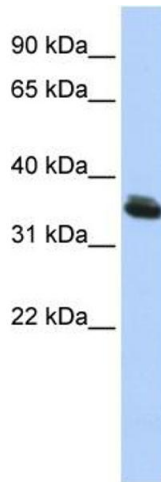
Storage: -20 °C

---

Storage Comment: For short term use, store at 2-8°C up to 1 week. For long term storage, store at -20°C in small aliquots to prevent freeze-thaw cycles.

## Images

---



### Western Blotting

**Image 1.** WB Suggested Anti-LHX3 Antibody Titration: 0.2-1 ug/ml ELISA Titer: 1:62500 Positive Control: HepG2 cell lysate