

Datasheet for ABIN2779648
anti-Paired Box 3 antibody (N-Term)

3 Images

[Go to Product page](#)

Overview

Quantity:	100 µL
Target:	Paired Box 3 (PAX3)
Binding Specificity:	N-Term
Reactivity:	Human, Mouse, Rat, Dog, Cow, Horse, Rabbit, Guinea Pig, Saccharomyces cerevisiae
Host:	Rabbit
Clonality:	Polyclonal
Conjugate:	This Paired Box 3 antibody is un-conjugated
Application:	Western Blotting (WB)

Product Details

Immunogen:	The immunogen is a synthetic peptide directed towards the N terminal region of human PAX3
Sequence:	DRNTVPSVSS ISRILRSKFG KGEETEEADLE RKEAEESEKK AKHSIDGILS
Predicted Reactivity:	Cow: 100%, Dog: 100%, Guinea Pig: 100%, Horse: 100%, Human: 100%, Mouse: 100%, Rabbit: 100%, Rat: 100%, Yeast: 83%
Characteristics:	This is a rabbit polyclonal antibody against PAX3. It was validated on Western Blot using a cell lysate as a positive control.
Purification:	Affinity Purified

Target Details

Target:	Paired Box 3 (PAX3)
---------	---------------------

Target Details

Alternative Name:	PAX3 (PAX3 Products)
Background:	<p>PAX3 is a member of the paired box (PAX) family of transcription factors. Members of the PAX family typically contain a paired box domain and a paired-type homeodomain. These genes play critical roles during fetal development. Mutations in paired box gene 3 are associated with Waardenburg syndrome, craniofacial-deafness-hand syndrome, and alveolar rhabdomyosarcoma. The translocation t(2,13)(q35,q14), which represents a fusion between PAX3 and the forkhead gene, is a frequent finding in alveolar rhabdomyosarcoma. This gene is a member of the paired box (PAX) family of transcription factors. Members of the PAX family typically contain a paired box domain and a paired-type homeodomain. These genes play critical roles during fetal development. Mutations in paired box gene 3 are associated with Waardenburg syndrome, craniofacial-deafness-hand syndrome, and alveolar rhabdomyosarcoma. The translocation t(2,13)(q35,q14), which represents a fusion between PAX3 and the forkhead gene, is a frequent finding in alveolar rhabdomyosarcoma. Alternative splicing results in transcripts encoding isoforms with different C-termini. This gene is a member of the paired box (PAX) family of transcription factors. Members of the PAX family typically contain a paired box domain and a paired-type homeodomain. These genes play critical roles during fetal development. Mutations in paired box gene 3 are associated with Waardenburg syndrome, craniofacial-deafness-hand syndrome, and alveolar rhabdomyosarcoma. The translocation t(2,13)(q35,q14), which represents a fusion between PAX3 and the forkhead gene, is a frequent finding in alveolar rhabdomyosarcoma. Alternative splicing results in transcripts encoding isoforms with different C-termini.</p> <p>Alias Symbols: CDHS, HUP2, MGC120381, MGC120382, MGC120383, MGC120384, MGC134778, WS1, WS3</p> <p>Protein Interaction Partner: PCTP, UBC, TAF1, POU3F2, HDAC1, TRIM28, HDAC10, SOX8, WWTR1, PAX3, DAXX, CIB1, SOX10, MEOX2, MEOX1, MITF, MSX1, Rad23b, PSMD4, TBP, IPO13, CNR1,</p> <p>Protein Size: 484</p>
Molecular Weight:	53 kDa
Gene ID:	5077
NCBI Accession:	NM_181458 , NP_852123
UniProt:	Q494Z3
Pathways:	Sensory Perception of Sound , Tube Formation

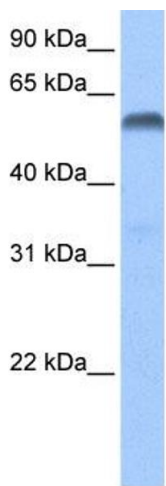
Application Details

Application Notes:	Optimal working dilutions should be determined experimentally by the investigator.
Comment:	Antigen size: 484 AA
Restrictions:	For Research Use only

Handling

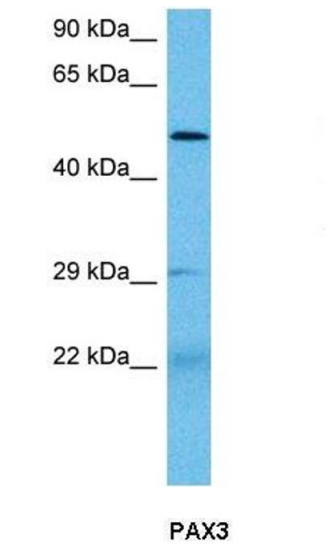
Format:	Liquid
Concentration:	Lot specific
Buffer:	Liquid. Purified antibody supplied in 1x PBS buffer with 0.09 % (w/v) sodium azide and 2 % sucrose.
Preservative:	Sodium azide
Precaution of Use:	This product contains Sodium azide: a POISONOUS AND HAZARDOUS SUBSTANCE which should be handled by trained staff only.
Handling Advice:	Avoid repeated freeze-thaw cycles.
Storage:	-20 °C
Storage Comment:	For short term use, store at 2-8°C up to 1 week. For long term storage, store at -20°C in small aliquots to prevent freeze-thaw cycles.

Images



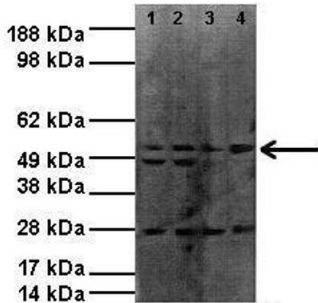
Western Blotting

Image 1. WB Suggested Anti-PAX3 Antibody Titration: 0.2-1 ug/ml Positive Control: Hela cell lysate



Western Blotting

Image 2. Host: Mouse Target Name: PAX3 Sample Tissue: Mouse Small Intestine Antibody Dilution: 1ug/ml



Western Blotting

Image 3. Lanes: Lane1: 20ug RH30 lysate Lane2: 20ug RH30 lysate Lane3: 20ug RH41 lysate Lane4: 20ug RH41 lysate Primary Antibody Dilution: 1:1000 Secondary Antibody: Donkey anti-rabbit HRP Secondary Antibody Dilution: 1:4000 Gene Name: PAX3 Submitted by: Dr Joanna Selfe, Institute of Cancer Research

See Immunoblot 2 Data and Customer Feedback for more Information