

Datasheet for ABIN2779652
anti-PSMD14 antibody (C-Term)[Go to Product page](#)

3 Images

Overview

Quantity:	100 µL
Target:	PSMD14
Binding Specificity:	C-Term
Reactivity:	Human, Mouse, Rat, Zebrafish (Danio rerio), Cow, Guinea Pig, Horse, Rabbit, Saccharomyces cerevisiae
Host:	Rabbit
Clonality:	Polyclonal
Conjugate:	This PSMD14 antibody is un-conjugated
Application:	Western Blotting (WB)

Product Details

Immunogen:	The immunogen is a synthetic peptide directed towards the C terminal region of human PSMD14
Sequence:	EEDKMTPEQL AIKNVGKQDP KRHLEEHVDV LMTSNIVQCL AAMLDTVVF
Predicted Reactivity:	Cow: 100%, Guinea Pig: 100%, Horse: 100%, Human: 100%, Mouse: 100%, Rabbit: 100%, Rat: 100%, Yeast: 100%, Zebrafish: 100%
Characteristics:	This is a rabbit polyclonal antibody against PSMD14. It was validated on Western Blot using a cell lysate as a positive control.
Purification:	Affinity Purified

Target Details

Target:	PSMD14
Alternative Name:	PSMD14 (PSMD14 Products)
Background:	<p>POH1 (pad one homolog-1) is a component of the 26S proteasome, a multiprotein complex that degrades proteins targeted for destruction by the ubiquitin pathway</p> <p>Alias Symbols: PAD1, POH1, RPN11</p> <p>Protein Interaction Partner: FAM9B, DPY30, HUWE1, UBC, PSMD7, MEOX2, UBE3C, SHFM1, UBE3A, RAD23B, PSME2, PSME1, PSMD13, PSMD12, PSMD11, PSMD10, PSMD8, PSME4, ADRM1, PSME3, PSMD6, PSMD4, PSMD3, PSMD2, PSMD1, PSMC6, PSMC5, PSMC4, PSMC3, PSMC2, PSMC1, PSMB7, PSMB6, PSMB5, PSMB4, PSMB3,</p> <p>Protein Size: 310</p>
Molecular Weight:	35 kDa
Gene ID:	10213
NCBI Accession:	NM_005805 , NP_005796
UniProt:	O00487
Pathways:	Mitotic G1-G1/S Phases , DNA Replication , M Phase , Positive Regulation of Endopeptidase Activity , Synthesis of DNA , Ubiquitin Proteasome Pathway

Application Details

Application Notes:	Optimal working dilutions should be determined experimentally by the investigator.
Comment:	Antigen size: 310 AA
Restrictions:	For Research Use only

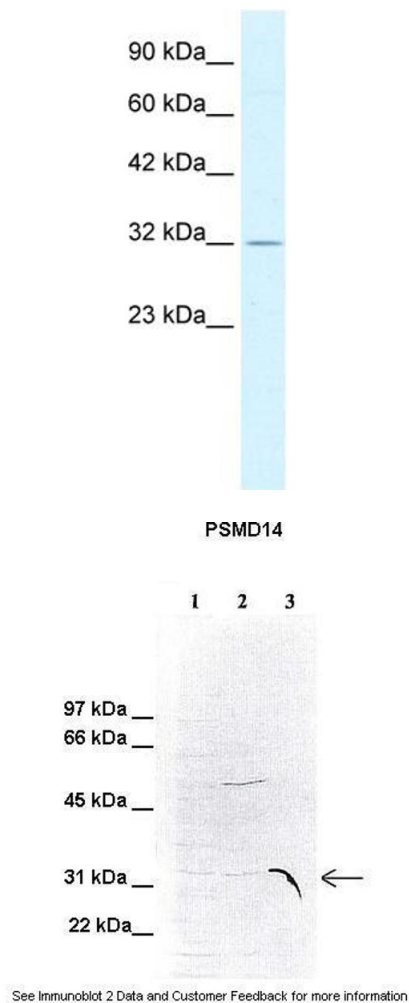
Handling

Format:	Liquid
Concentration:	Lot specific
Buffer:	Liquid. Purified antibody supplied in 1x PBS buffer with 0.09 % (w/v) sodium azide and 2 % sucrose.
Preservative:	Sodium azide
Precaution of Use:	This product contains Sodium azide: a POISONOUS AND HAZARDOUS SUBSTANCE which should be handled by trained staff only.

Handling

Handling Advice:	Avoid repeated freeze-thaw cycles.
Storage:	-20 °C
Storage Comment:	For short term use, store at 2-8°C up to 1 week. For long term storage, store at -20°C in small aliquots to prevent freeze-thaw cycles.

Images

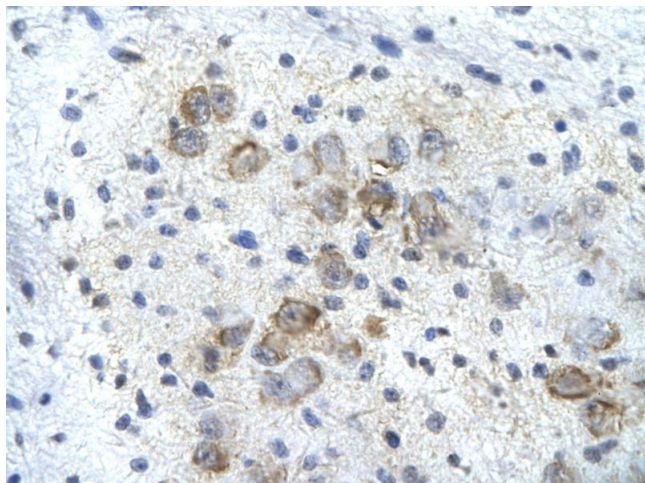


Western Blotting

Image 1. WB Suggested Anti-PSMD14 Antibody Titration: 0.2-1 ug/ml Positive Control: HepG2 cell lysate PSMD14 is supported by BioGPS gene expression data to be expressed in HepG2

Western Blotting

Image 2. Lanes: 1. 100 ug HeLa cell lysate 2. 100 ug mouse liver cytosolic extract 3. 1.5 ug human 26S Proteasome Primary Antibody Dilution: 1:1000 Secondary Antibody: Anti-Rabbit AP Secondary Antibody Dilution: 1:10000 Gene Name: PSMD14 Submitted by: Anonymous



Immunohistochemistry

Image 3. Rabbit Anti-PSMD14 Antibody Paraffin Embedded
Tissue: Human neural cell Cellular Data: Epithelial cells of
renal tubule Antibody Concentration: 4.0-8.0 ug/ml
Magnification: 400X