

Datasheet for ABIN2779653  
**anti-PSMD14 antibody (N-Term)**

## 3 Images

[Go to Product page](#)

## Overview

Quantity:	100 µL
Target:	PSMD14
Binding Specificity:	N-Term
Reactivity:	Human, Mouse, Rat, Zebrafish (Danio rerio), Cow, Guinea Pig, Horse, Rabbit, Dog
Host:	Rabbit
Clonality:	Polyclonal
Conjugate:	This PSMD14 antibody is un-conjugated
Application:	Western Blotting (WB), Immunohistochemistry (IHC)

## Product Details

Immunogen:	The immunogen is a synthetic peptide directed towards the N terminal region of human PSMD14
Sequence:	MDRLRLGGG MPGLGQGPPT DAPAVDTAEQ VYISSLALLK MLKHGRAGVP
Predicted Reactivity:	Cow: 100%, Dog: 100%, Guinea Pig: 100%, Horse: 100%, Human: 100%, Mouse: 100%, Rabbit: 100%, Rat: 100%, Zebrafish: 100%
Characteristics:	This is a rabbit polyclonal antibody against PSMD14. It was validated on Western Blot using a cell lysate as a positive control.
Purification:	Protein A purified

## Target Details

Target:	PSMD14
---------	--------

## Target Details

Alternative Name:	PSMD14 ( <a href="#">PSMD14 Products</a> )
Background:	<p>POH1 (pad one homolog-1) is a component of the 26S proteasome, a multiprotein complex that degrades proteins targeted for destruction by the ubiquitin pathway (Spataro et al., 1997 [PubMed 9374539]).</p> <p>Alias Symbols: PAD1, POH1, RPN11</p> <p>Protein Interaction Partner: FAM9B, DPY30, HUWE1, UBC, PSMD7, MEOX2, UBE3C, SHFM1, UBE3A, RAD23B, PSME2, PSME1, PSMD13, PSMD12, PSMD11, PSMD10, PSMD8, PSME4, ADRM1, PSME3, PSMD6, PSMD4, PSMD3, PSMD2, PSMD1, PSMC6, PSMC5, PSMC4, PSMC3, PSMC2, PSMC1, PSMB7, PSMB6, PSMB5, PSMB4, PSMB3,</p> <p>Protein Size: 310</p>
Molecular Weight:	35 kDa
Gene ID:	10213
NCBI Accession:	<a href="#">NM_005805</a> , <a href="#">NP_005796</a>
UniProt:	<a href="#">O00487</a>
Pathways:	<a href="#">Mitotic G1-G1/S Phases</a> , <a href="#">DNA Replication</a> , <a href="#">M Phase</a> , <a href="#">Positive Regulation of Endopeptidase Activity</a> , <a href="#">Synthesis of DNA</a> , <a href="#">Ubiquitin Proteasome Pathway</a>

## Application Details

Application Notes:	Optimal working dilutions should be determined experimentally by the investigator.
Comment:	Antigen size: 310 AA
Restrictions:	For Research Use only

## Handling

Format:	Liquid
Concentration:	Lot specific
Buffer:	Liquid. Purified antibody supplied in 1x PBS buffer with 0.09 % (w/v) sodium azide and 2 % sucrose.
Preservative:	Sodium azide
Precaution of Use:	This product contains Sodium azide: a POISONOUS AND HAZARDOUS SUBSTANCE which should be handled by trained staff only.

## Handling

Handling Advice: Avoid repeated freeze-thaw cycles.

Storage: -20 °C

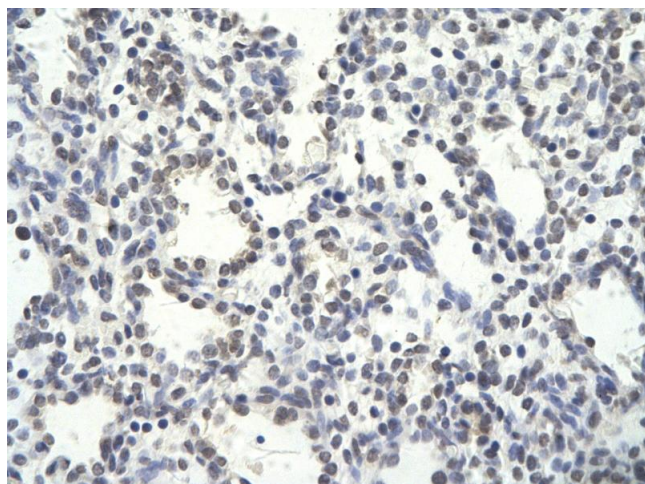
Storage Comment: For short term use, store at 2-8°C up to 1 week. For long term storage, store at -20°C in small aliquots to prevent freeze-thaw cycles.

## Images



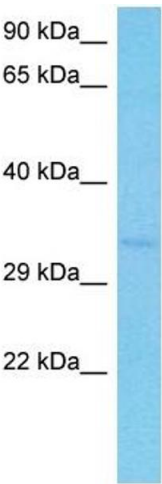
### Western Blotting

**Image 1.** WB Suggested Anti-PSMD14 Antibody Titration: 1.25ug/ml ELISA Titer: 1:12500 Positive Control: HepG2 cell lysate PSMD14 is supported by BioGPS gene expression data to be expressed in HepG2



### Immunohistochemistry

**Image 2.** Rabbit Anti-PSMD14 antibody Paraffin Embedded Tissue: Human Lung cell Cellular Data: Epithelial cells of renal tubule Antibody Concentration: 4.0-8.0 ug/ml Magnification: 400X



Western Blotting

**Image 3.** Host: Mouse Target Name: PSMD14 Sample  
Tissue: Mouse Brain Antibody Dilution: 1ug/ml