

Datasheet for ABIN2779656  
**anti-POLR2B antibody (Middle Region)**[Go to Product page](#)

1 Image

1 Publication

## Overview

Quantity:	100 µL
Target:	POLR2B
Binding Specificity:	Middle Region
Reactivity:	Human, Mouse, Rat, Dog, Cow, Rabbit, Guinea Pig, Horse, Zebrafish (Danio rerio)
Host:	Rabbit
Clonality:	Polyclonal
Conjugate:	This POLR2B antibody is un-conjugated
Application:	Western Blotting (WB)

## Product Details

Immunogen:	The immunogen is a synthetic peptide directed towards the middle region of human POLR2B
Sequence:	FFRSVFYRSY KEQESKKGFD QEEVFEKPTR ETCQGMRHAI YDKLDDDGLI
Predicted Reactivity:	Cow: 100%, Dog: 100%, Guinea Pig: 100%, Horse: 100%, Human: 100%, Mouse: 100%, Rabbit: 100%, Rat: 100%, Zebrafish: 93%
Characteristics:	This is a rabbit polyclonal antibody against POLR2B. It was validated on Western Blot using a cell lysate as a positive control.
Purification:	Affinity Purified

## Target Details

Target:	POLR2B
---------	--------

## Target Details

Alternative Name:	POLR2B ( <a href="#">POLR2B Products</a> )
Background:	<p>POLR2B encodes the second largest subunit of RNA polymerase II, the polymerase responsible for synthesizing messenger RNA in eukaryotes. This subunit, in combination with at least two other polymerase subunits, forms a structure within the polymerase that maintains contact in the active site of the enzyme between the DNA template and the newly synthesized RNA.</p> <p>Alias Symbols: RPB2, POL2RB, hsRPB2, hRPB140</p> <p>Protein Interaction Partner: ESR1, UBC, TCEB3, SRC, PSMB9, SUMO2, XRN2, WWOX, SUZ12, RNF2, NEDD4, ITCH, RABEP2, HECW2, FBXO6, CDK20, HDAC11, ILK, POLR2C, MED19, MED26, RECQL5, VCP, BARD1, MDC1, POLR3F, TUBB4B, TUBA4A, POLR2I, POLR2E, POLR2D, POLR2A, DCTN1, ATP6V1B2, MEN1, CDK7, CCNH,</p> <p>Protein Size: 1174</p>
Molecular Weight:	134 kDa
Gene ID:	5431
NCBI Accession:	<a href="#">NM_000938</a> , <a href="#">NP_000929</a>
UniProt:	<a href="#">P30876</a>
Pathways:	<a href="#">Regulatory RNA Pathways</a> , <a href="#">DNA Damage Repair</a>

## Application Details

Application Notes:	Optimal working dilutions should be determined experimentally by the investigator.
Comment:	Antigen size: 1174 AA
Restrictions:	For Research Use only

## Handling

Format:	Liquid
Concentration:	Lot specific
Buffer:	Liquid. Purified antibody supplied in 1x PBS buffer with 0.09 % (w/v) sodium azide and 2 % sucrose.
Preservative:	Sodium azide
Precaution of Use:	This product contains Sodium azide: a POISONOUS AND HAZARDOUS SUBSTANCE which should be handled by trained staff only.

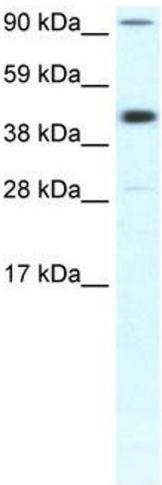
## Handling

Handling Advice:	Avoid repeated freeze-thaw cycles.
Storage:	-20 °C
Storage Comment:	For short term use, store at 2-8°C up to 1 week. For long term storage, store at -20°C in small aliquots to prevent freeze-thaw cycles.

## Publications

Product cited in:	Zhang, Muralimanoharan, Wortman, Mendelson: "Primate-specific miR-515 family members inhibit key genes in human trophoblast differentiation and are upregulated in preeclampsia." in: <b>Proceedings of the National Academy of Sciences of the United States of America</b> , (2016) ( <a href="#">PubMed</a> ).
-------------------	---

## Images



### Western Blotting

**Image 1.** WB Suggested Anti-POLR2B Antibody Titration:  
0.2-1 ug/ml Positive Control: Human Muscle