



[Go to Product page](#)

Datasheet for ABIN2779661

## anti-CTBP1 antibody (C-Term)

4 Images

1 Publication

### Overview

Quantity:	100 µL
Target:	CTBP1
Binding Specificity:	C-Term
Reactivity:	Human, Mouse, Rat, Pig, Dog, Horse
Host:	Rabbit
Clonality:	Polyclonal
Conjugate:	This CTBP1 antibody is un-conjugated
Application:	Western Blotting (WB), Immunohistochemistry (IHC)

### Product Details

Immunogen:	The immunogen is a synthetic peptide directed towards the C terminal region of human CTBP1
Sequence:	TGIPAAVEGI VPSAMSLSHG LPPVAHPPHA PSPGQTVKPE ADRDHASDQL
Predicted Reactivity:	Dog: 100%, Horse: 93%, Human: 100%, Mouse: 93%, Pig: 100%, Rat: 100%
Characteristics:	This is a rabbit polyclonal antibody against CTBP1. It was validated on Western Blot and immunohistochemistry.
Purification:	Affinity Purified

### Target Details

Target:	CTBP1
Alternative Name:	CTBP1 ( <a href="#">CTBP1 Products</a> )

## Target Details

---

Background:	<p>The phosphoprotein C-terminal binding protein 1 (CTBP-1) binds the C-terminus of adenovirus E1A protein. CTBP-1 is a transcriptional repressor and may play a role during cellular proliferation. A second closely related gene, CTBP2, maps to chromosome 21.</p> <p>Alias Symbols: BARS</p> <p>Protein Interaction Partner: CTBP2, CTBP1, CRY2, NOL4L, FOXP2, DMRTB1, TSHZ3, BCAS3, PLCB1, CEP68, KLF12, IKZF1, NOL4, TGIF1, MAPK9, PRKAA1, HOXB5, TCF4, SNRPN, DGCR6, NRIP1, FUNDC1, LNX1, LCOR, RNF111, KLF3, IKZF2, RAI2, ZBTB18, ARNT2, ZEB2, PIAS2, CDC23, LCORL, MARCH10, SMAD6, UBC,</p> <p>Protein Size: 440</p>
Molecular Weight:	48 kDa
Gene ID:	1487
NCBI Accession:	<a href="#">NM_001328</a> , <a href="#">NP_001319</a>
UniProt:	<a href="#">Q13363</a>
Pathways:	<a href="#">Retinoic Acid Receptor Signaling Pathway</a>

## Application Details

---

Application Notes:	Optimal working dilutions should be determined experimentally by the investigator.
Comment:	Antigen size: 440 AA
Restrictions:	For Research Use only

## Handling

---

Format:	Liquid
Concentration:	Lot specific
Buffer:	Liquid. Purified antibody supplied in 1x PBS buffer with 0.09 % (w/v) sodium azide and 2 % sucrose.
Preservative:	Sodium azide
Precaution of Use:	This product contains Sodium azide: a POISONOUS AND HAZARDOUS SUBSTANCE which should be handled by trained staff only.
Handling Advice:	Avoid repeated freeze-thaw cycles.
Storage:	-20 °C

## Handling

Storage Comment: For short term use, store at 2-8°C up to 1 week. For long term storage, store at -20°C in small aliquots to prevent freeze-thaw cycles.

## Publications

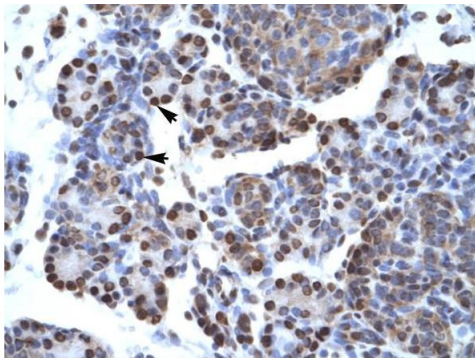
Product cited in: Sweetman, Münsterberg: "The vertebrate spalt genes in development and disease." in: **Developmental biology**, Vol. 293, Issue 2, pp. 285-93, (2006) ([PubMed](#)).

## Images



### Western Blotting

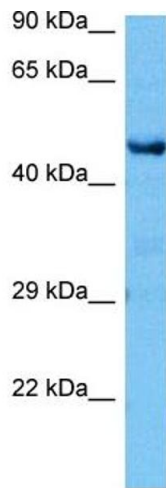
**Image 1.** WB Suggested Anti-CTBP1 Antibody Titration: 0.2-1 ug/ml ELISA Titer: 1:62500 Positive Control: Jurkat cell lysate CTBP1 is strongly supported by BioGPS gene expression data to be expressed in Human Jurkat cells



Rabbit Anti-CTBP1 Antibody  
Catalog Number: ARP32468  
Lot Number: QC2154  
Paraffin Embedded Tissue: Human Pancreas  
Cells with Positive label: Epithelial cells of pancreatic acinus (Indicated with Arrows)  
Antibody Concentration: 4.0-8.0 µg/ml  
Magnification: 400X

### Immunohistochemistry

**Image 2.** Human Pancreas



### Western Blotting

**Image 3.** Host: Mouse Target Name: CTBP1 Sample Tissue: Mouse Brain Antibody Dilution: 1ug/ml

Please check the [product details page](#) for more images. Overall 4 images are available for ABIN2779661.