



[Go to Product page](#)

Datasheet for ABIN2779664
anti-SUV39H1 antibody (C-Term)

3 Images

Overview

Quantity:	100 µL
Target:	SUV39H1
Binding Specificity:	C-Term
Reactivity:	Human, Mouse, Rat, Cow, Dog, Guinea Pig, Rabbit, Zebrafish (Danio rerio)
Host:	Rabbit
Clonality:	Polyclonal
Conjugate:	This SUV39H1 antibody is un-conjugated
Application:	Western Blotting (WB), Immunohistochemistry (IHC)

Product Details

Immunogen:	The immunogen is a synthetic peptide directed towards the C terminal region of human SUV39H1
Sequence:	FDYMQVDPV DMESTRMDSN FGLAGLPGSP KKRVRIECKC GTESCRKYL
Predicted Reactivity:	Cow: 100%, Dog: 100%, Guinea Pig: 100%, Human: 100%, Mouse: 100%, Rabbit: 100%, Rat: 100%, Zebrafish: 85%
Characteristics:	This is a rabbit polyclonal antibody against SUV39H1. It was validated on Western Blot and immunohistochemistry.
Purification:	Protein A purified

Target Details

Target:	SUV39H1
---------	---------

Target Details

Alternative Name:	SUV39H1 (SUV39H1 Products)
Background:	<p>SUV39H1, a human homolog of the Drosophila position effect variegation modifier Su(var)3-9 and of the S. pombe silencing factor clr4, encodes a heterochromatic protein that transiently accumulates at centromeric positions during mitosis. This gene is a member of the suppressor of variegation 3-9 homolog family and encodes a protein with a chromodomain and a C-terminal SET domain. This nuclear protein moves to the centromeres during mitosis and functions as a histone methyltransferase, methylating Lys-9 of histone H3. Overall, it plays a vital role in heterochromatin organization, chromosome segregation, and mitotic progression.</p> <p>Publication Note: This RefSeq record includes a subset of the publications that are available for this gene. Please see the Entrez Gene record to access additional publications.</p> <p>Alias Symbols: KMT1A, MG44, SUV39H</p> <p>Protein Interaction Partner: LZTS2, CEP70, HOOK2, CBX5, KRTAP10-7, HIST2H3A, CDCA4, KLHDC4, GTPBP2, ZNF581, ZCCHC17, CRBN, ING4, DCAF8, KLF15, KLHL20, PHF19, IL16, IGFBP4, ID2, ID1, HOXC4, HOXA1, FYN, FUS, EZH2, CLK3, ATP6V1B1, ATF3, GTF2H2C_2, H3F3C, LHX8, STX19, C17orf82, ZNF829, C</p> <p>Protein Size: 412</p>
Molecular Weight:	48 kDa
Gene ID:	6839
NCBI Accession:	NM_003173 , NP_003164
UniProt:	O43463

Application Details

Application Notes:	Optimal working dilutions should be determined experimentally by the investigator.
Comment:	Antigen size: 412 AA
Restrictions:	For Research Use only

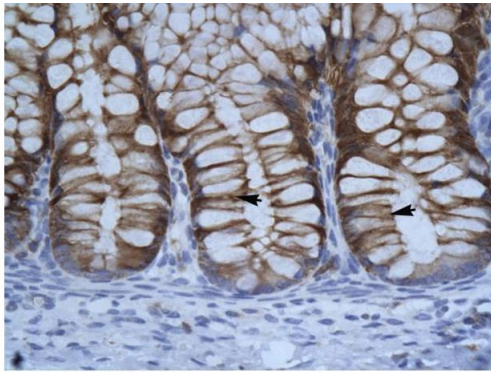
Handling

Format:	Liquid
Concentration:	Lot specific
Buffer:	Liquid. Purified antibody supplied in 1x PBS buffer with 0.09 % (w/v) sodium azide and 2 % sucrose.

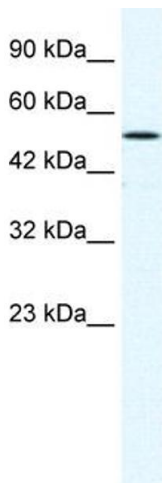
Handling

Preservative:	Sodium azide
Precaution of Use:	This product contains Sodium azide: a POISONOUS AND HAZARDOUS SUBSTANCE which should be handled by trained staff only.
Handling Advice:	Avoid repeated freeze-thaw cycles.
Storage:	-20 °C
Storage Comment:	For short term use, store at 2-8°C up to 1 week. For long term storage, store at -20°C in small aliquots to prevent freeze-thaw cycles.

Images



Rabbit Anti-SUV39H1 Antibody
Catalog Number: ARP32470
Lot Number: QC2156
Paraffin Embedded Tissue: Human Intestine
Cells with Positive label: Epithelial cells of intestinal gland(Indicated with Arrows)
Antibody Concentration: 4.0-8.0 µg/ml
Magnification: 400X

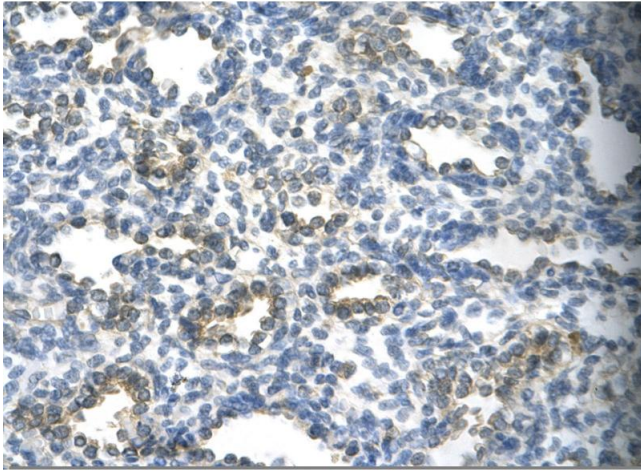


Immunohistochemistry

Image 1. Human Intestine

Western Blotting

Image 2. WB Suggested Anti-SUV39H1 Antibody Titration: 1.25ug/ml ELISA Titer: 1:312500 Positive Control: HepG2 cell lysate SUV39H1 is supported by BioGPS gene expression data to be expressed in HepG2



Immunohistochemistry

Image 3. Rabbit Anti-SUV39H1 Antibody Paraffin Embedded
Tissue: Human alveolar cell Cellular Data: Epithelial cells of renal tubule Antibody Concentration: 4.0-8.0 ug/ml
Magnification: 400X