

Datasheet for ABIN2779682
anti-GRIP1 antibody (C-Term)

3 Images

[Go to Product page](#)

Overview

Quantity:	100 µL
Target:	GRIP1
Binding Specificity:	C-Term
Reactivity:	Human, Mouse, Rat, Guinea Pig, Rabbit, Dog, Horse, Zebrafish (Danio rerio), Cow
Host:	Rabbit
Clonality:	Polyclonal
Conjugate:	This GRIP1 antibody is un-conjugated
Application:	Western Blotting (WB)

Product Details

Immunogen:	The immunogen is a synthetic peptide directed towards the C terminal region of human GRIP1
Sequence:	RQASFQERSS SRPHYSQTTR SNTLPSTDVGR KSVTLRKMKQ EIKEIMSPTP
Predicted Reactivity:	Cow: 100%, Dog: 100%, Guinea Pig: 100%, Horse: 93%, Human: 100%, Mouse: 100%, Rabbit: 100%, Rat: 100%, Zebrafish: 79%
Characteristics:	This is a rabbit polyclonal antibody against GRIP1. It was validated on Western Blot using a cell lysate as a positive control.
Purification:	Affinity Purified

Target Details

Target:	GRIP1
---------	-------

Target Details

Alternative Name:	GRIP1 (GRIP1 Products)
Background:	<p>GRIP1 may play a role as a localized scaffold for the assembly of a multiprotein signaling complex and as mediator of the trafficking of its binding partners at specific subcellular location in neurons.</p> <p>Alias Symbols: GRIP</p> <p>Protein Interaction Partner: GPR37, LATS2, YWHAB, PRKD2, GRIA2, RXRB, UBE2I, LRRFIP1, CTNNB1, NCOA6, CREBBP, PRMT1, EFNA5, CARM1, VDR, RXRA, PPARG, ESR1, THRA, HIST1H3A, EP300, GRIP1, EHMT2, UBC, SMAD3, HDAC1, NR3C1, PICK1, IRF3, CSPG4, EFNB2, FLII, AR, EFNB1, GRIPAP1, NUMBL, GRM3, G</p> <p>Protein Size: 849</p>
Molecular Weight:	92 kDa
Gene ID:	23426
NCBI Accession:	NM_001178074
UniProt:	Q9Y3R0
Pathways:	Intracellular Steroid Hormone Receptor Signaling Pathway

Application Details

Application Notes:	Optimal working dilutions should be determined experimentally by the investigator.
Comment:	Antigen size: 849 AA
Restrictions:	For Research Use only

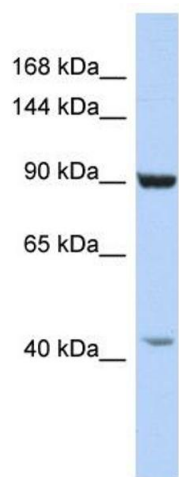
Handling

Format:	Liquid
Concentration:	Lot specific
Buffer:	Liquid. Purified antibody supplied in 1x PBS buffer with 0.09 % (w/v) sodium azide and 2 % sucrose.
Preservative:	Sodium azide
Precaution of Use:	This product contains Sodium azide: a POISONOUS AND HAZARDOUS SUBSTANCE which should be handled by trained staff only.
Handling Advice:	Avoid repeated freeze-thaw cycles.

Handling

Storage:	-20 °C
Storage Comment:	For short term use, store at 2-8°C up to 1 week. For long term storage, store at -20°C in small aliquots to prevent freeze-thaw cycles.

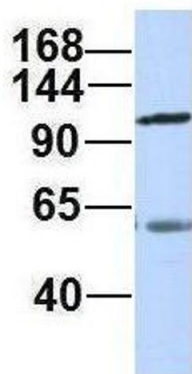
Images



GRIP1

Western Blotting

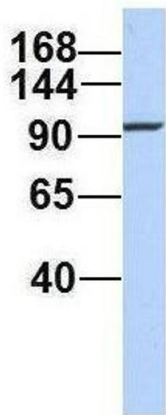
Image 1. WB Suggested Anti-GRIP1 Antibody Titration: 0.2-1 ug/ml ELISA Titer: 1:312500 Positive Control: HepG2 cell lysate



GRIP1

Western Blotting

Image 2. Host: Rabbit Target Name: GRIP1 Sample Type: Human Adult Placenta Antibody Dilution: 1.0ug/ml



Western Blotting

Image 3. Host: Rabbit Target Name: GRIP1 Sample Type: 721_B Antibody Dilution: 1.0ug/ml GRIP1 is supported by BioGPS gene expression data to be expressed in 721_B