

Datasheet for ABIN2779683
anti-CIC antibody (N-Term)[Go to Product page](#)

5 Images

1 Publication

Overview

| | |
|----------------------|--|
| Quantity: | 100 µL |
| Target: | CIC |
| Binding Specificity: | N-Term |
| Reactivity: | Mouse, Human, Rat, Cow, Dog, Guinea Pig, Horse, Rabbit |
| Host: | Rabbit |
| Clonality: | Polyclonal |
| Conjugate: | This CIC antibody is un-conjugated |
| Application: | Western Blotting (WB), Immunohistochemistry (IHC) |

Product Details

| | |
|-----------------------|---|
| Immunogen: | The immunogen is a synthetic peptide directed towards the N terminal region of human CIC |
| Sequence: | PSQPDPSVQP SEAQQPASHP VASNQSKEPA ESAAVAHERP PGGTGSADPE |
| Predicted Reactivity: | Cow: 100%, Dog: 100%, Guinea Pig: 100%, Horse: 100%, Human: 100%, Mouse: 100%, Rabbit: 100%, Rat: 100% |
| Characteristics: | This is a rabbit polyclonal antibody against Clon Channel. It was validated on Western Blot and immunohistochemistry. |
| Purification: | Protein A purified |

Target Details

| | |
|---------|-----|
| Target: | CIC |
|---------|-----|

Target Details

| | |
|-------------------|---|
| Alternative Name: | CIC (CIC Products) |
| Background: | <p>Clon Channel represents a new subfamily of the HMG-box superfamily. Expression of the Cic gene is predominantly restricted to immature granule cells in the cerebellum, hippocampus and olfactory bulb in the CNS</p> <p>Protein Interaction Partner: GTPBP3, CENPJ, ZNRD1, PYCR2, SETD2, TRIM22, PICK1, SEC62, ATXN1, GABPB1, PLK1, CSNK2B, NFYC,</p> <p>Protein Size: 1608</p> |
| Molecular Weight: | 164 kDa |
| Gene ID: | 23152 |
| NCBI Accession: | NM_015125 , NP_055940 |
| UniProt: | Q96RK0 |

Application Details

| | |
|--------------------|--|
| Application Notes: | Optimal working dilutions should be determined experimentally by the investigator. |
| Comment: | Antigen size: 1608 AA |
| Restrictions: | For Research Use only |

Handling

| | |
|--------------------|---|
| Format: | Liquid |
| Concentration: | Lot specific |
| Buffer: | Liquid. Purified antibody supplied in 1x PBS buffer with 0.09 % (w/v) sodium azide and 2 % sucrose. |
| Preservative: | Sodium azide |
| Precaution of Use: | This product contains Sodium azide: a POISONOUS AND HAZARDOUS SUBSTANCE which should be handled by trained staff only. |
| Handling Advice: | Avoid repeated freeze-thaw cycles. |
| Storage: | -20 °C |
| Storage Comment: | For short term use, store at 2-8°C up to 1 week. For long term storage, store at -20°C in small aliquots to prevent freeze-thaw cycles. |

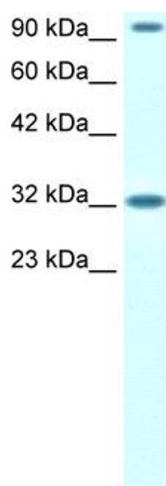
Publications

Product cited in:

Lind, Svedin, Domsgen, Kapell, Laitinen, Moll, Flodström-Tullberg: "Coxsackievirus counters the host innate immune response by blocking type III interferon expression." in: **The Journal of general virology**, Vol. 97, Issue 6, pp. 1-12, (2016) ([PubMed](#)).

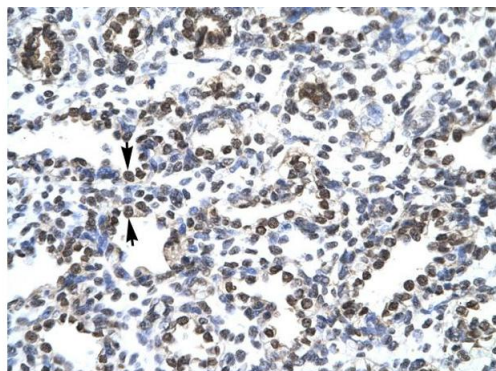
Schulte, Liu, Panas, Thaa, Dickson, Götte, Achour, McInerney: "Combined structural, biochemical and cellular evidence demonstrates that both FGDF motifs in alphavirus nsP3 are required for efficient replication." in: **Open biology**, Vol. 6, Issue 7, (2016) ([PubMed](#)).

Images



Western Blotting

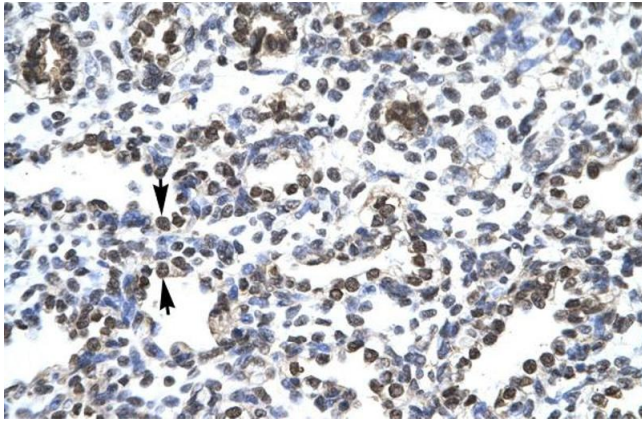
Image 1. WB Suggested Anti-CIC Antibody Titration:
1.25ug/ml Positive Control: Jurkat cell lysate



Rabbit Anti-CIC Antibody
Catalog Number: ARP32498
Lot Number: QC1963
Paraffin Embedded Tissue: Human Lung
Cells with Positive label: Alveolar cells (Indicated with Arrows)
Antibody Concentration: 4.0-8.0 µg/ml
Magnification: 400X

Immunohistochemistry

Image 2. Human Lung



Immunohistochemistry

Image 3. Human Lung

Please check the [product details page](#) for more images. Overall 5 images are available for ABIN2779683.