



[Go to Product page](#)

Datasheet for ABIN2779686
anti-HEY1 antibody (C-Term)

5 Images

1 Publication

Overview

Quantity:	100 µL
Target:	HEY1
Binding Specificity:	C-Term
Reactivity:	Human, Mouse, Rat, Cow, Dog, Guinea Pig, Horse, Rabbit
Host:	Rabbit
Clonality:	Polyclonal
Conjugate:	This HEY1 antibody is un-conjugated
Application:	Western Blotting (WB), Immunohistochemistry (IHC)

Product Details

Immunogen:	The immunogen is a synthetic peptide directed towards the C-terminal region of Human HEY1
Sequence:	PQNGHGNAGT TASPTEPHHQ GRLGSAHPEA PALRAPPSPGS FGPVLPVSTS
Predicted Reactivity:	Cow: 79%, Dog: 86%, Guinea Pig: 93%, Horse: 93%, Human: 100%, Mouse: 93%, Rabbit: 79%, Rat: 93%
Characteristics:	This is a rabbit polyclonal antibody against HEY1. It was validated on Western Blot.
Purification:	Affinity Purified

Target Details

Target:	HEY1
Alternative Name:	HEY1 (HEY1 Products)

Target Details

Background:	<p>Hairy/enhancer of split-related proteins, such as HEY1, are basic helix-loop-helix (bHLH) transcription factors implicated in cell fate decision and boundary formation. HEY genes are direct transcriptional targets of the Notch signaling pathways in Drosophila and vertebrates.</p> <p>Alias Symbols: BHLHb31, CHF2, HERP2, HESR1, HRT-1, OAF1</p> <p>Protein Interaction Partner: SYVN1, DERL2, HEY2, SEL1L, PRKD2, LAPTM5, SKIL, SMAD9, SMAD3, ARNT, NOTCH1, ELAVL1, FBXW7, HEY1, GATA1, MYOD1,</p> <p>Protein Size: 304</p>
Molecular Weight:	32 kDa
Gene ID:	23462
NCBI Accession:	NM_012258 , NP_036390
UniProt:	Q9Y5J3
Pathways:	Tube Formation

Application Details

Restrictions:	For Research Use only
---------------	-----------------------

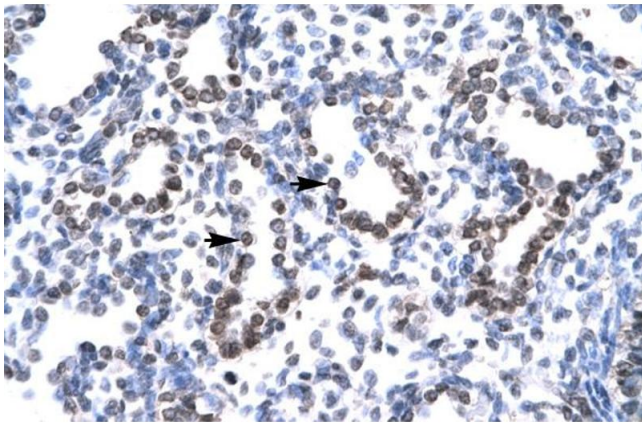
Handling

Format:	Liquid
Concentration:	1 mg/mL
Buffer:	Liquid. Purified antibody supplied in 1x PBS buffer with 0.09 % (w/v) sodium azide and 2 % sucrose.
Preservative:	Sodium azide
Precaution of Use:	This product contains Sodium azide: a POISONOUS AND HAZARDOUS SUBSTANCE which should be handled by trained staff only.
Handling Advice:	Avoid repeat freeze-thaw cycles.
Storage:	-20 °C
Storage Comment:	For short term use, store at 2-8°C up to 1 week. For long term storage, store at -20°C in small aliquots to prevent freeze-thaw cycles.

Publications

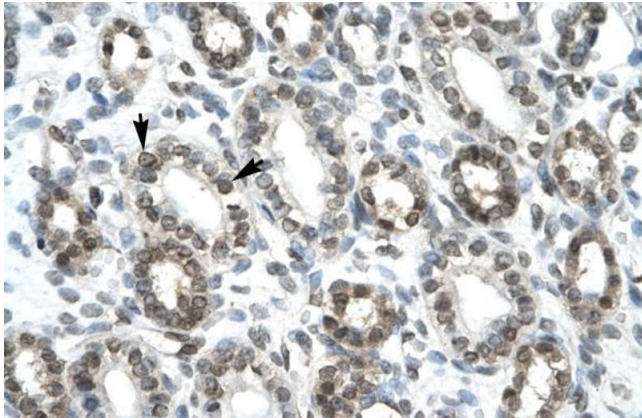
Product cited in: Lazrek, Goffard, Schanen, Karquel, Bocket, Lion, Devaux, Hedouin, Gosset, Hober: "Detection of hepatitis C virus antibodies and RNA among medicolegal autopsy cases in Northern France." in: **Diagnostic microbiology and infectious disease**, Vol. 55, Issue 1, pp. 55-8, (2006) ([PubMed](#)).

Images



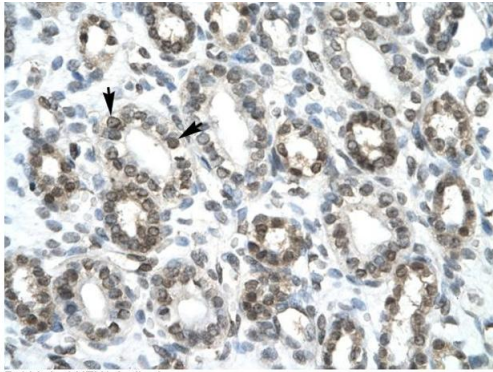
Immunohistochemistry

Image 1.



Immunohistochemistry

Image 2.



Rabbit Anti-HEY1 Antibody
Catalog Number: ARP32512
Lot Number: QC1975
Paraffin Embedded Tissue: Human Kidney
Cells with Positive label: Epithelial cells of renal tubule (Indicated with Arrows)
Antibody Concentration: 4.0-8.0 µg/ml
Magnification: 400X

Immunohistochemistry

Image 3. Rabbit Anti-HEY1 Antibody Paraffin Embedded Tissue: Human Kidney Cellular Data: Epithelial cells of renal tubule Antibody Concentration: 4.0-8.0 ug/ml Magnification: 400X

Please check the [product details page](#) for more images. Overall 5 images are available for ABIN2779686.