

Datasheet for ABIN2779691  
**anti-SEC14L2 antibody (C-Term)**

## 3 Images

[Go to Product page](#)

## Overview

Quantity:	100 µL
Target:	SEC14L2
Binding Specificity:	C-Term
Reactivity:	Human, Mouse, Rat, Dog, Cow, Guinea Pig, Horse, Rabbit, Zebrafish (Danio rerio)
Host:	Rabbit
Clonality:	Polyclonal
Conjugate:	This SEC14L2 antibody is un-conjugated
Application:	Western Blotting (WB)

## Product Details

Immunogen:	The immunogen is a synthetic peptide directed towards the C-terminal region of Human SEC14L2
Sequence:	NPKCKSKINY GGDIPRKYYV RDQVKQQYEH SVQISRGSSH QVEYEILFPG
Predicted Reactivity:	Cow: 100%, Dog: 100%, Guinea Pig: 100%, Horse: 100%, Human: 100%, Mouse: 100%, Rabbit: 100%, Rat: 100%, Zebrafish: 90%
Characteristics:	This is a rabbit polyclonal antibody against SEC14L2. It was validated on Western Blot.
Purification:	Affinity Purified

## Target Details

Target:	SEC14L2
---------	---------

## Target Details

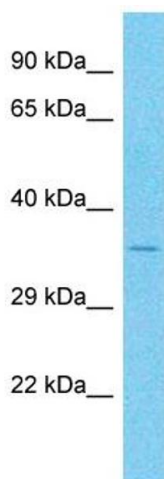
Alternative Name:	SEC14L2 ( <a href="#">SEC14L2 Products</a> )
Background:	<p>This gene encodes a cytosolic protein which belongs to a family of lipid-binding proteins including Sec14p, alpha-tocopherol transfer protein, and cellular retinol-binding protein. The encoded protein stimulates squalene monooxygenase which is a downstream enzyme in the cholesterol biosynthetic pathway. Alternatively spliced transcript variants encoding different isoforms have been identified for this gene.</p> <p>Protein Interaction Partner: UBC, PIK3CG,</p> <p>Protein Size: 320</p>
Molecular Weight:	35 kDa
Gene ID:	23541

## Application Details

Application Notes:	Optimal working dilution should be determined by the investigator.
Restrictions:	For Research Use only

## Handling

Format:	Liquid
Concentration:	1 mg/mL
Buffer:	Liquid. Purified antibody supplied in 1x PBS buffer with 0.09 % (w/v) sodium azide and 2 % sucrose.
Preservative:	Sodium azide
Precaution of Use:	This product contains Sodium azide: a POISONOUS AND HAZARDOUS SUBSTANCE which should be handled by trained staff only.
Handling Advice:	Avoid repeat freeze-thaw cycles.
Storage:	-20 °C
Storage Comment:	For short term use, store at 2-8°C up to 1 week. For long term storage, store at -20°C in small aliquots to prevent freeze-thaw cycles.



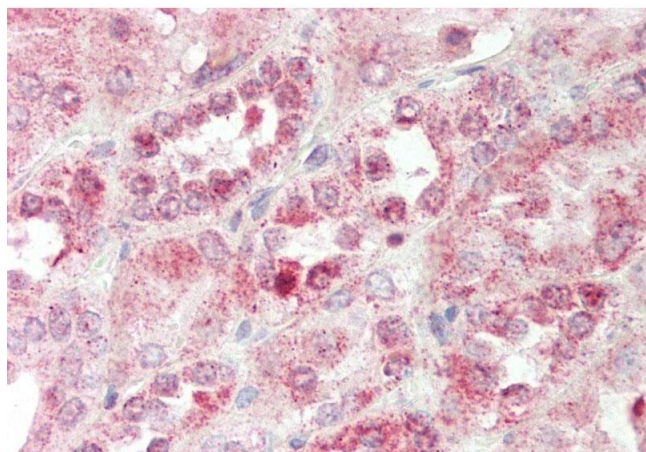
#### Western Blotting

**Image 1.** Host: Rabbit Target Name: SEC14L2 Sample Type: Lymphnode Tumor lysates Antibody Dilution: 1.0ug/ml



#### Immunohistochemistry

**Image 2.** Rabbit Anti-SEC14L2 antibody Formalin Fixed Paraffin Embedded Tissue: Human Prostate Primary antibody Concentration: 1:100 Secondary Antibody: Donkey anti-Rabbit-Cy3 Secondary Antibody Concentration: 1:200 Magnification: 20x Exposure Time: 0.5-2.0sec



#### Immunohistochemistry

**Image 3.** Rabbit Anti-SEC14L2 antibody Formalin Fixed Paraffin Embedded Tissue: Human Kidney Primary antibody Concentration: 1:100 Secondary Antibody: Donkey anti-Rabbit-Cy3 Secondary Antibody Concentration: 1:200 Magnification: 20x Exposure Time: 0.5-2.0sec