

Datasheet for ABIN2779702
anti-ALX3 antibody (Middle Region)



[Go to Product page](#)

1 Image

Overview

Quantity:	100 µL
Target:	ALX3
Binding Specificity:	Middle Region
Reactivity:	Human, Mouse, Rat, Rabbit, Cow, Guinea Pig, Horse
Host:	Rabbit
Clonality:	Polyclonal
Conjugate:	This ALX3 antibody is un-conjugated
Application:	Western Blotting (WB)

Product Details

Immunogen:	The immunogen is a synthetic peptide directed towards the middle region of Rat Alx3
Sequence:	FPACGPLEPY LPEPAKPPAK YLQDLGPGPV LNGGHFYEGS SEAEKASKA
Predicted Reactivity:	Cow: 100%, Guinea Pig: 93%, Horse: 93%, Human: 100%, Mouse: 93%, Rabbit: 100%, Rat: 93%
Characteristics:	This is a rabbit polyclonal antibody against Alx3. It was validated on Western Blot.
Purification:	Affinity Purified

Target Details

Target:	ALX3
Alternative Name:	Alx3 (ALX3 Products)
Background:	The function of this protein remains unknown.

Target Details

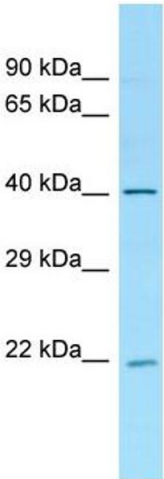
	Alias Symbols: -
	Protein Size: 343
Molecular Weight:	37 kDa
Gene ID:	365900
NCBI Accession:	NM_001007012 , NP_001007013
UniProt:	Q6RW14

Application Details

Application Notes:	Optimal working dilutions should be determined experimentally by the investigator.
Comment:	Antigen size: 343 AA
Restrictions:	For Research Use only

Handling

Format:	Liquid
Concentration:	Lot specific
Buffer:	Liquid. Purified antibody supplied in 1x PBS buffer with 0.09 % (w/v) sodium azide and 2 % sucrose.
Preservative:	Sodium azide
Precaution of Use:	This product contains Sodium azide: a POISONOUS AND HAZARDOUS SUBSTANCE which should be handled by trained staff only.
Handling Advice:	Avoid repeated freeze-thaw cycles.
Storage:	-20 °C
Storage Comment:	For short term use, store at 2-8°C up to 1 week. For long term storage, store at -20°C in small aliquots to prevent freeze-thaw cycles.



Western Blotting

Image 1. WB Suggested Anti-Alx3 Antibody Titration: 1.0 ug/ml Positive Control: Rat Thymus