



Datasheet for ABIN2779708  
**anti-WWTR1 antibody (N-Term)**



[Go to Product page](#)

5 Images

Overview

|                      |   |
|----------------------|---|
| Quantity:            | 100 µL  |
| Target:              | WWTR1   |
| Binding Specificity: | N-Term  |
| Reactivity:          | Human, Mouse, Rat, Dog, Cow, Guinea Pig, Rabbit |
| Host:                | Rabbit  |
| Clonality:           | Polyclonal                                      |
| Conjugate:           | This WWTR1 antibody is un-conjugated            |
| Application:         | Western Blotting (WB)                           |

Product Details

|                       |   |
|-----------------------|---|
| Immunogen:            | The immunogen is a synthetic peptide directed towards the N terminal region of human WWTR1                                      |
| Sequence:             | PRLAGGAQHV RSHSPASLQ LGTGAGAAGS PAQQHAHLRQ QSYDVTDELP   |
| Predicted Reactivity: | Cow: 100%, Dog: 100%, Guinea Pig: 100%, Human: 100%, Mouse: 100%, Rabbit: 100%, Rat: 100%                                       |
| Characteristics:      | This is a rabbit polyclonal antibody against WWTR1. It was validated on Western Blot using a cell lysate as a positive control. |
| Purification:         | Affinity Purified   |

Target Details

|         |       |
|---------|-------|
| Target: | WWTR1 |
|---------|-------|

## Target Details

---

|                   |  |
|-------------------|--|
| Alternative Name: | WWTR1 ( <a href="#">WWTR1 Products</a> )   |
| Background:       | <p>TAZ (transcriptional coactivator with PDZ-binding motif), also known as WW domain containing transcription regulator 1 (WWTR1), is a member of the bicoid sub-family of homeodomain-containing transcription factors. TAZ is a 14-3-3 binding protein that co-activates Runx2-dependent gene transcription while repressing PPAR-gamma-dependent gene transcription. TAZ has been reported to be a modulator of mesenchymal stem cell differentiation. TAZ may also play a role in brain and sensory organ development. A similar protein in mice is required for proper forebrain development. Two transcript variants encoding distinct isoforms have been identified for this gene. Other alternative splice variants may exist, but their full length sequences have not been determined.</p> <p>Alias Symbols: DKFZP586I1419, TAZ</p> <p>Protein Interaction Partner: MED28, NOTCH1, YWHAQ, LATS1, BTRC, YWHAE, TP53BP2, PPP1CA, KLF5, YWHAZ, YWHAG, PAX3, SLC9A3R2, TEAD3, TEAD4, NKX2-1, RUNX1,</p> <p>Protein Size: 400</p> |
| Molecular Weight: | 44 kDa   |
| Gene ID:          | 25937  |
| NCBI Accession:   | <a href="#">NM_015472</a> , <a href="#">NP_056287</a>  |
| UniProt:          | <a href="#">Q9GZV5</a>   |
| Pathways:         | <a href="#">Regulation of Lipid Metabolism by PPARalpha</a>  |

## Application Details

---

|                    |  |
|--------------------|--|
| Application Notes: | Optimal working dilutions should be determined experimentally by the investigator. |
| Comment:           | Antigen size: 400 AA   |
| Restrictions:      | For Research Use only  |

## Handling

---

|                |   |
|----------------|---|
| Format:        | Liquid  |
| Concentration: | Lot specific  |
| Buffer:        | Liquid. Purified antibody supplied in 1x PBS buffer with 0.09 % (w/v) sodium azide and 2 % sucrose. |
| Preservative:  | Sodium azide  |

## Handling

|                    |   |
|--------------------|---|
| Precaution of Use: | This product contains Sodium azide: a POISONOUS AND HAZARDOUS SUBSTANCE which should be handled by trained staff only.                  |
| Handling Advice:   | Avoid repeated freeze-thaw cycles.  |
| Storage:           | -20 °C  |
| Storage Comment:   | For short term use, store at 2-8°C up to 1 week. For long term storage, store at -20°C in small aliquots to prevent freeze-thaw cycles. |

## Images



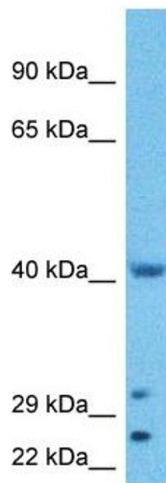
### Western Blotting

**Image 1.** WB Suggested Anti-WWTR1 Antibody Titration:  
0.2-1 ug/ml Positive Control: HepG2 cell lysate



### Western Blotting

**Image 2.** Host: Mouse Target Name: WWTR1 Sample  
Tissue: Mouse Kidney Antibody Dilution: 1ug/ml



### Western Blotting

**Image 3.** Host: Rabbit Target Name: WWTR1 Sample Type: HepG2 Whole Cell lysates Antibody Dilution: 1.0ug/ml

Please check the [product details page](#) for more images. Overall 5 images are available for ABIN2779708.