

Datasheet for ABIN2779715
anti-GATA6 antibody (N-Term)

5 Images

[Go to Product page](#)

Overview

Quantity:	100 µL
Target:	GATA6
Binding Specificity:	N-Term
Reactivity:	Human, Mouse, Rat, Cow, Pig, Dog
Host:	Rabbit
Clonality:	Polyclonal
Conjugate:	This GATA6 antibody is un-conjugated
Application:	Western Blotting (WB), Immunofluorescence (IF)

Product Details

Immunogen:	The immunogen is a synthetic peptide directed towards the N terminal region of human GATA6
Sequence:	PEEMYQTLAA LSSQGPAAYD GAPGGFVHSA AAAAAAAAAA SSPVYVPTTR
Predicted Reactivity:	Cow: 92%, Dog: 100%, Human: 100%, Mouse: 100%, Pig: 100%, Rat: 100%
Characteristics:	This is a rabbit polyclonal antibody against GATA6. It was validated on Western Blot using a cell lysate as a positive control.
Purification:	Affinity Purified

Target Details

Target:	GATA6
Alternative Name:	GATA6 (GATA6 Products)

Target Details

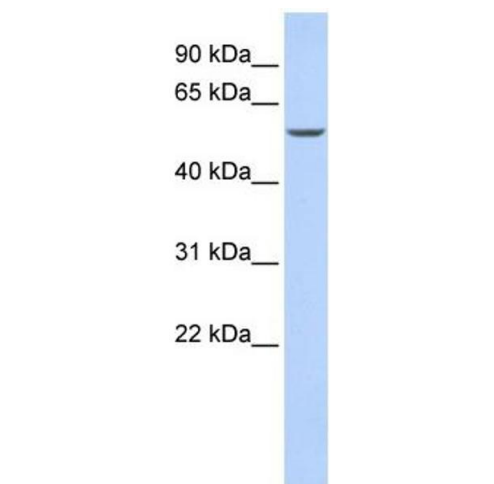
Background:	GATA6 is thought to be important for regulating terminal differentiation and/or proliferation. Alias Symbols: - Protein Interaction Partner: KPNA3, SP1, CDK9, HHEX, MED1, EP300, CRIP2, NKX2-1, KLF2, Protein Size: 595
Molecular Weight:	60 kDa
Gene ID:	2627
NCBI Accession:	NM_005257 , NP_005248
UniProt:	Q92908

Application Details

Application Notes:	Optimal working dilutions should be determined experimentally by the investigator.
Comment:	Antigen size: 595 AA
Restrictions:	For Research Use only

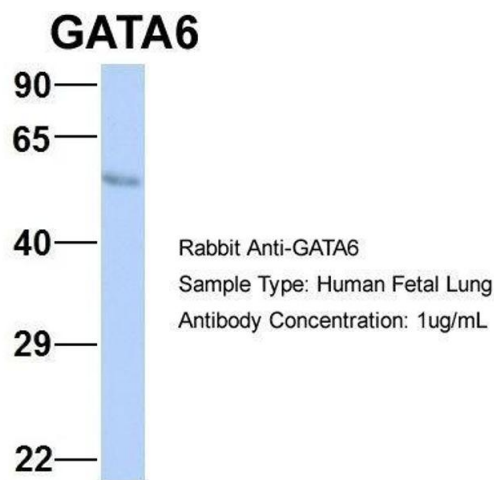
Handling

Format:	Liquid
Concentration:	Lot specific
Buffer:	Liquid. Purified antibody supplied in 1x PBS buffer with 0.09 % (w/v) sodium azide and 2 % sucrose.
Preservative:	Sodium azide
Precaution of Use:	This product contains Sodium azide: a POISONOUS AND HAZARDOUS SUBSTANCE which should be handled by trained staff only.
Handling Advice:	Avoid repeated freeze-thaw cycles.
Storage:	-20 °C
Storage Comment:	For short term use, store at 2-8°C up to 1 week. For long term storage, store at -20°C in small aliquots to prevent freeze-thaw cycles.



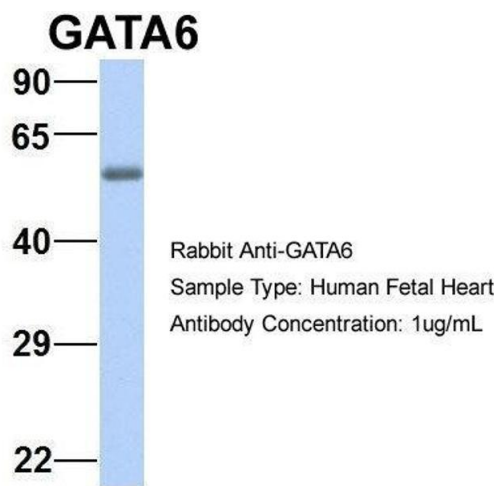
Western Blotting

Image 1. WB Suggested Anti-GATA6 Antibody Titration: 0.2-1 ug/ml ELISA Titer: 1:312500 Positive Control: 293T cell lysate GATA6 is supported by BioGPS gene expression data to be expressed in HEK293T



Western Blotting

Image 2. Host: Rabbit Target Name: GATA6 Sample Type: Human Fetal Lung Antibody Dilution: 1.0ug/ml



Western Blotting

Image 3. Host: Rabbit Target Name: GATA6 Sample Type: Human Fetal Heart Antibody Dilution: 1.0ug/ml

Please check the [product details page](#) for more images. Overall 5 images are available for ABIN2779715.