

Datasheet for ABIN2779717
anti-LHX6 antibody (C-Term)[Go to Product page](#)

4 Images

Overview

Quantity:	100 µL
Target:	LHX6
Binding Specificity:	C-Term
Reactivity:	Human, Mouse, Rat, Dog, Cow, Guinea Pig
Host:	Rabbit
Clonality:	Polyclonal
Conjugate:	This LHX6 antibody is un-conjugated
Application:	Western Blotting (WB), Immunohistochemistry (IHC)

Product Details

Immunogen:	The immunogen is a synthetic peptide directed towards the C terminal region of human LHX6
Sequence:	LSRRVIQVWF QNCRARHKKH TPQHPVPPSG APPSRLPSAL SDDIHYTPFS
Predicted Reactivity:	Cow: 93%, Dog: 100%, Guinea Pig: 93%, Human: 100%, Mouse: 93%, Rat: 100%
Characteristics:	This is a rabbit polyclonal antibody against LHX6. It was validated on Western Blot and immunohistochemistry.
Purification:	Protein A purified

Target Details

Target:	LHX6
Alternative Name:	LHX6 (LHX6 Products)

Target Details

Background:	<p>LHX6 is a member of a large protein family that contains the LIM domain, a unique cysteine-rich zinc-binding domain. The encoded protein may function as a transcriptional regulator and may be involved in the control of differentiation and development of neural and lymphoid cells.</p> <p>Alias Symbols: LHX6.1</p> <p>Protein Interaction Partner: LDB1,</p> <p>Protein Size: 363</p>
Molecular Weight:	40 kDa
Gene ID:	26468
NCBI Accession:	NM_014368 , NP_055183
UniProt:	Q9UPM6

Application Details

Application Notes:	Optimal working dilutions should be determined experimentally by the investigator.
Comment:	Antigen size: 363 AA
Restrictions:	For Research Use only

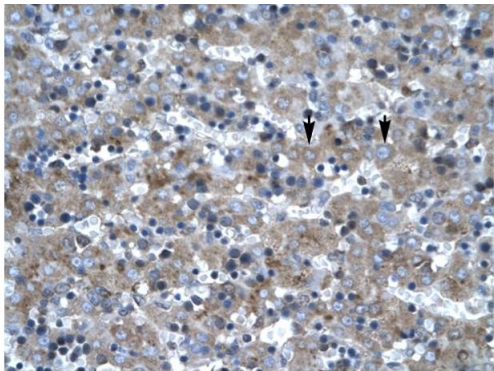
Handling

Format:	Liquid
Concentration:	Lot specific
Buffer:	Liquid. Purified antibody supplied in 1x PBS buffer with 0.09 % (w/v) sodium azide and 2 % sucrose.
Preservative:	Sodium azide
Precaution of Use:	This product contains Sodium azide: a POISONOUS AND HAZARDOUS SUBSTANCE which should be handled by trained staff only.
Handling Advice:	Avoid repeated freeze-thaw cycles.
Storage:	-20 °C
Storage Comment:	For short term use, store at 2-8°C up to 1 week. For long term storage, store at -20°C in small aliquots to prevent freeze-thaw cycles.



Western Blotting

Image 1. WB Suggested Anti-LHX6 Antibody Titration:
1.0ug/ml Positive Control: HepG2 cell lysate



Rabbit Anti-LHX6 Antibody
Catalog Number: ARP32553
Lot Number: QC2006
Paraffin Embedded Tissue: Human Liver
Cells with Positive label: Hepatocytes (Indicated with Arrows)
Antibody Concentration: 4.0-8.0 µg/ml
Magnification: 400X

Immunohistochemistry

Image 2. Rabbit Anti-LHX6 Antibody Paraffin Embedded
Tissue: Human Liver Cellular Data: Hepatocytes Antibody
Concentration: 4.0-8.0 ug/ml Magnification: 400X



Anti-LHX6 Western Blot &
Peptide Block Validation

Lot Number: QC2006
Lysate: HepG2 Cell

Lane A: Primary Antibody
Lane B: Primary Antibody + Blocking Peptide

Primary Antibody Concentration: 2.5µg/ml
Peptide Concentration: 2.0µg/ml
Lysate Quantity: 25µg/lane
Gel Concentration: 12%

Western Blotting

Image 3. Host: Rabbit Target Name: LHX6 Sample Type:
HepG2 Lane A: Primary Antibody Lane B: Primary Antibody +
Blocking Peptide Primary Antibody Concentration: 2.5ug/mL
Peptide Concentration: 2.0ug/mL Lysate Quantity:
25ug/lane Gel Concentration: 12%

Please check the [product details page](#) for more images. Overall 4 images are available for ABIN2779717.