

Datasheet for ABIN2779724
anti-SND1 antibody (N-Term)[Go to Product page](#)

2 Images

Overview

Quantity:	100 µL
Target:	SND1
Binding Specificity:	N-Term
Reactivity:	Human, Mouse, Rat, Cow, Rabbit, Zebrafish (Danio rerio), Dog, Guinea Pig, Horse
Host:	Rabbit
Clonality:	Polyclonal
Conjugate:	This SND1 antibody is un-conjugated
Application:	Western Blotting (WB), Immunohistochemistry (IHC)

Product Details

Immunogen:	The immunogen is a synthetic peptide directed towards the N terminal region of human SND1
Sequence:	LPDYLLVTVM LSGIKCPTFR READGSETPE PFAAEAKFFT ESRLQRDVQ
Predicted Reactivity:	Cow: 100%, Dog: 100%, Guinea Pig: 100%, Horse: 100%, Human: 100%, Mouse: 100%, Rabbit: 100%, Rat: 100%, Zebrafish: 100%
Characteristics:	This is a rabbit polyclonal antibody against SND1. It was validated on Western Blot using a cell lysate as a positive control.
Purification:	Protein A purified

Target Details

Target:	SND1
---------	------

Target Details

Alternative Name:	SND1 (SND1 Products)
Background:	<p>SND1 was originally characterized as a transcriptional coactivator for Epstein-Barr virus nuclear antigen 2. It is a STAT6 TAD interacting protein containing staphylococcal nuclease (SN)-like domain and tudor domain. p100 . The interaction is mediated by the TAD domain of STAT6 and the SN-like domain of SND1. SND1 associates with the large subunit of RNA polymerase II and is mediating interaction between STAT6 and RNA polymerase II. It was identified as a novel coactivator for STAT6 and suggest its functions as a bridging factor between STAT6 and the basal transcription machinery</p> <p>Alias Symbols: p100, TDRD11</p> <p>Protein Interaction Partner: HUWE1, RAPGEF2, UBC, SUMO2, MDM2, LIN28A, SHFM1, DDX3X, EIF3CL, RPL35, RPS27, RPS26, RPS16, RPS11, RPS9, RPS6, RPS3A, RPS2, RPL23A, HNRNPU, TARDBP, UBD, RNU4-1, RNU5A-1, RNU6-1, PRPF8, RNU2-1, RNU1-1, G3BP1, VCAM1, MAK, ITGA4, FN1, CSNK2A1, SSR3, SRSF3, R</p> <p>Protein Size: 885</p>
Molecular Weight:	100 kDa
Gene ID:	27044
NCBI Accession:	NM_014390 , NP_055205
UniProt:	Q7KZF4

Application Details

Application Notes:	Optimal working dilutions should be determined experimentally by the investigator.
Comment:	Antigen size: 885 AA
Restrictions:	For Research Use only

Handling

Format:	Liquid
Concentration:	Lot specific
Buffer:	Liquid. Purified antibody supplied in 1x PBS buffer with 0.09 % (w/v) sodium azide and 2 % sucrose.
Preservative:	Sodium azide
Precaution of Use:	This product contains Sodium azide: a POISONOUS AND HAZARDOUS SUBSTANCE which

Handling

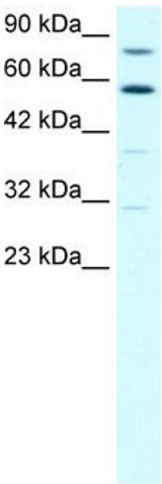
should be handled by trained staff only.

Handling Advice: Avoid repeated freeze-thaw cycles.

Storage: -20 °C

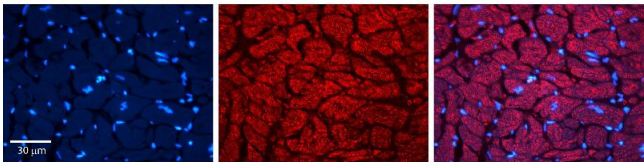
Storage Comment: For short term use, store at 2-8°C up to 1 week. For long term storage, store at -20°C in small aliquots to prevent freeze-thaw cycles.

Images



Western Blotting

Image 1. WB Suggested Anti-SND1 Antibody Titration: 1.25ug/ml Positive Control: Raji cell lysate SND1 is supported by BioGPS gene expression data to be expressed in Raji



Immunohistochemistry

Image 2. Rabbit Anti-SND1 Antibody Formalin Fixed Paraffin Embedded Tissue: Human heart Tissue Observed Staining: Cytoplasmic Primary Antibody Concentration: 1:100 Other Working Concentrations: 1:600 Secondary Antibody: Donkey anti-Rabbit-Cy3 Secondary Antibody Concentration: 1:200 Magnification: 20X Exposure Time: 0.5 - 2.0 sec