

Datasheet for ABIN2779729
anti-SALL3 antibody (Middle Region)[Go to Product page](#)[1 Image](#)[1 Publication](#)

Overview

Quantity:	100 µL
Target:	SALL3
Binding Specificity:	Middle Region
Reactivity:	Human, Mouse, Rabbit, Rat, Dog, Guinea Pig, Horse, Cow, Zebrafish (Danio rerio)
Host:	Rabbit
Clonality:	Polyclonal
Conjugate:	This SALL3 antibody is un-conjugated
Application:	Western Blotting (WB)

Product Details

Immunogen:	The immunogen is a synthetic peptide directed towards the middle region of human SALL3
Sequence:	SVENGSGESD RLSNDSSSAV GDLESRSAGS PALSESSSSQ ALSPAPSNGE
Predicted Reactivity:	Cow: 79%, Dog: 100%, Guinea Pig: 100%, Horse: 100%, Human: 100%, Mouse: 100%, Rabbit: 100%, Rat: 100%, Zebrafish: 79%
Characteristics:	This is a rabbit polyclonal antibody against SALL3. It was validated on Western Blot using a cell lysate as a positive control.
Purification:	Affinity Purified

Target Details

Target:	SALL3
---------	-------

Target Details

Alternative Name:	SALL3 (SALL3 Products)
Background:	<p>SALL3 belongs to the sal C2H2-type zinc-finger protein family. It contains 9 C2H2-type zinc fingers. SALL3 is a probable transcription factor.</p> <p>Alias Symbols: ZNF796</p> <p>Protein Interaction Partner: DNMT3A, CHD7, UBC, SOX2,</p> <p>Protein Size: 1300</p>
Molecular Weight:	135 kDa
Gene ID:	27164
NCBI Accession:	NM_171999 , NP_741996
UniProt:	Q9BXA9

Application Details

Application Notes:	Optimal working dilutions should be determined experimentally by the investigator.
Comment:	Antigen size: 1300 AA
Restrictions:	For Research Use only

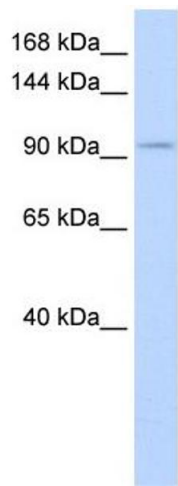
Handling

Format:	Liquid
Concentration:	Lot specific
Buffer:	Liquid. Purified antibody supplied in 1x PBS buffer with 0.09 % (w/v) sodium azide and 2 % sucrose.
Preservative:	Sodium azide
Precaution of Use:	This product contains Sodium azide: a POISONOUS AND HAZARDOUS SUBSTANCE which should be handled by trained staff only.
Handling Advice:	Avoid repeated freeze-thaw cycles.
Storage:	-20 °C
Storage Comment:	For short term use, store at 2-8°C up to 1 week. For long term storage, store at -20°C in small aliquots to prevent freeze-thaw cycles.

Publications

Product cited in: Sweetman, Münsterberg: "The vertebrate spalt genes in development and disease." in: **Developmental biology**, Vol. 293, Issue 2, pp. 285-93, (2006) ([PubMed](#)).

Images



Western Blotting

Image 1. WB Suggested Anti-SALL3 Antibody Titration: 0.2-1 ug/ml ELISA Titer: 1:62500 Positive Control: Human Placenta