

Datasheet for ABIN2779730  
**anti-MKX antibody (Middle Region)**[Go to Product page](#)

## 3 Images

## Overview

Quantity:	100 µL
Target:	MKX
Binding Specificity:	Middle Region
Reactivity:	Human, Mouse, Dog, Cow, Rat, Zebrafish (Danio rerio), Guinea Pig, Rabbit, Horse
Host:	Rabbit
Clonality:	Polyclonal
Conjugate:	This MKX antibody is un-conjugated
Application:	Western Blotting (WB), Immunohistochemistry (IHC)

## Product Details

Immunogen:	The immunogen is a synthetic peptide directed towards the middle region of human MKX
Sequence:	IKSENSVIKA GVRPESRASE DYVAPPKYKS SLLNRYLNDS LRHVMATNTT
Predicted Reactivity:	Cow: 93%, Dog: 93%, Guinea Pig: 93%, Horse: 93%, Human: 100%, Mouse: 92%, Rabbit: 93%, Rat: 92%, Zebrafish: 85%
Characteristics:	This is a rabbit polyclonal antibody against MKX. It was validated on Western Blot and immunohistochemistry.
Purification:	Affinity Purified

## Target Details

Target:	MKX
---------	-----

## Target Details

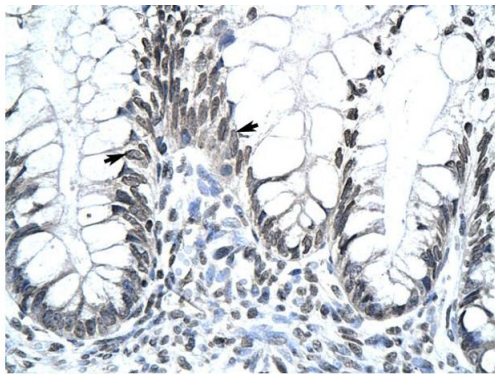
Alternative Name:	MKX ( <a href="#">MKX Products</a> )
Background:	<p>MKX contains 1 homeobox DNA-binding domain and belongs to the TALE/IRO homeobox family. It may act as a morphogenetic regulator of cell adhesion.</p> <p>Alias Symbols: IFRX, IRXL1, C10orf48</p> <p>Protein Interaction Partner: HSP90AA1, ELAVL1, SIN3A, TBP, HDAC1, GTF2B, GTF2A1,</p> <p>Protein Size: 352</p>
Molecular Weight:	39 kDa
Gene ID:	283078
NCBI Accession:	<a href="#">NM_173576</a> , <a href="#">NP_775847</a>
UniProt:	<a href="#">Q8IYA7</a>
Pathways:	<a href="#">Regulation of Muscle Cell Differentiation</a> , <a href="#">Skeletal Muscle Fiber Development</a>

## Application Details

Application Notes:	Optimal working dilutions should be determined experimentally by the investigator.
Comment:	Antigen size: 352 AA
Restrictions:	For Research Use only

## Handling

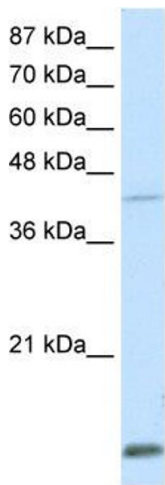
Format:	Liquid
Concentration:	Lot specific
Buffer:	Liquid. Purified antibody supplied in 1x PBS buffer with 0.09 % (w/v) sodium azide and 2 % sucrose.
Preservative:	Sodium azide
Precaution of Use:	This product contains Sodium azide: a POISONOUS AND HAZARDOUS SUBSTANCE which should be handled by trained staff only.
Handling Advice:	Avoid repeated freeze-thaw cycles.
Storage:	-20 °C
Storage Comment:	For short term use, store at 2-8°C up to 1 week. For long term storage, store at -20°C in small aliquots to prevent freeze-thaw cycles.



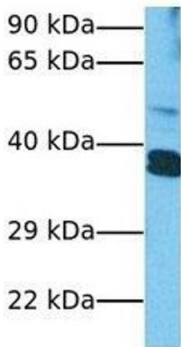
Rabbit Anti-MKX Antibody  
Catalog Number: ARP32574  
Lot Number: QC2257  
Paraffin Embedded Tissue: Human Stomach  
Cells with Positive label: Epithelial cells of fundic gland (Indicated with Arrows)  
Antibody Concentration: 4.0-8.0 µg/ml  
Magnification: 400X

Immunohistochemistry

Image 1. Human Stomach



**MKX**



Western Blotting

Image 2. WB Suggested Anti-MKX Antibody Titration: 0.2-1 ug/ml Positive Control: Transfected 293T

Western Blotting

Image 3. Host: Rabbit Target Name: MKX Sample Tissue: Human HepG2 Antibody Dilution: 1.0ug/ml