



[Go to Product page](#)

Datasheet for ABIN2779732
anti-Zfp982 antibody (N-Term)

1 Image

Overview

Quantity:	100 µL
Target:	Zfp982
Binding Specificity:	N-Term
Reactivity:	Human, Mouse, Cow, Dog, Horse, Pig, Rat
Host:	Rabbit
Clonality:	Polyclonal
Conjugate:	This Zfp982 antibody is un-conjugated
Application:	Western Blotting (WB)

Product Details

Immunogen:	The immunogen is a synthetic peptide directed towards the N-terminal region of Mouse Gm13152
Sequence:	MSVFLVNTPTQ GLLTFKDVAV EFSLEEWERL SFAQRSLCID VMLENYNNLL
Predicted Reactivity:	Cow: 93%, Dog: 100%, Horse: 93%, Human: 100%, Mouse: 86%, Pig: 93%, Rat: 93%
Characteristics:	This is a rabbit polyclonal antibody against Gm13152. It was validated on Western Blot.
Purification:	Affinity Purified

Target Details

Target:	Zfp982
Alternative Name:	Gm13152 (Zfp982 Products)

Target Details

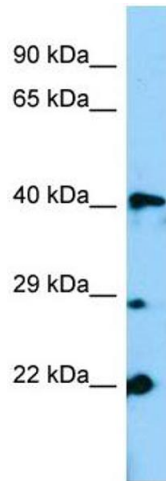
Background:	The function of this protein remains unknown. Alias Symbols: MGC60813, MGC76795, OTTMUSG00000010671 Protein Size: 368
Molecular Weight:	43 kDa
Gene ID:	195531
NCBI Accession:	NM_001039209 , NP_001034298
UniProt:	Q6PDN1

Application Details

Application Notes:	Optimal working dilutions should be determined experimentally by the investigator.
Comment:	Antigen size: 368 AA
Restrictions:	For Research Use only

Handling

Format:	Liquid
Concentration:	Lot specific
Buffer:	Liquid. Purified antibody supplied in 1x PBS buffer with 0.09 % (w/v) sodium azide and 2 % sucrose.
Preservative:	Sodium azide
Precaution of Use:	This product contains Sodium azide: a POISONOUS AND HAZARDOUS SUBSTANCE which should be handled by trained staff only.
Handling Advice:	Avoid repeated freeze-thaw cycles.
Storage:	-20 °C
Storage Comment:	For short term use, store at 2-8°C up to 1 week. For long term storage, store at -20°C in small aliquots to prevent freeze-thaw cycles.



Western Blotting

Image 1. WB Suggested Anti-Gm13152 Antibody Titration:
1.0 ug/ml Positive Control: Mouse Lung