



[Go to Product page](#)

Datasheet for ABIN2779736
anti-KLF15 antibody (N-Term)

2 Images

Overview

Quantity:	100 µL
Target:	KLF15
Binding Specificity:	N-Term
Reactivity:	Human, Mouse, Rat, Dog, Guinea Pig, Horse, Cow, Pig, Rabbit
Host:	Rabbit
Clonality:	Polyclonal
Conjugate:	This KLF15 antibody is un-conjugated
Application:	Western Blotting (WB), Immunohistochemistry (IHC)

Product Details

Immunogen:	The immunogen is a synthetic peptide directed towards the N terminal region of human KLF15
Sequence:	DASSPCSCSS PDSQALCSCY GGGLGTESQD SILDFLLSQA TLGSGGGSGS
Predicted Reactivity:	Cow: 86%, Dog: 86%, Guinea Pig: 85%, Horse: 92%, Human: 100%, Mouse: 79%, Pig: 86%, Rabbit: 93%, Rat: 86%
Characteristics:	This is a rabbit polyclonal antibody against KLF15. It was validated on Western Blot and immunohistochemistry.
Purification:	Protein A purified

Target Details

Target:	KLF15
---------	-------

Target Details

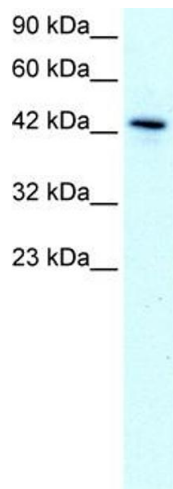
Alternative Name:	KLF15 (KLF15 Products)
Background:	<p>KLF15 is a Cys2-His2 zinc finger gene. It is found abundantly expressed in the liver, kidneys, heart, and skeletal muscle.</p> <p>Alias Symbols: KKLF</p> <p>Protein Interaction Partner: ZBTB24, PRKAB2, SUV39H1, SNX13, TCF21, KAT2B,</p> <p>Protein Size: 416</p>
Molecular Weight:	44 kDa
Gene ID:	28999
NCBI Accession:	NM_014079 , NP_054798
UniProt:	Q9UIH9

Application Details

Application Notes:	Optimal working dilutions should be determined experimentally by the investigator.
Comment:	Antigen size: 416 AA
Restrictions:	For Research Use only

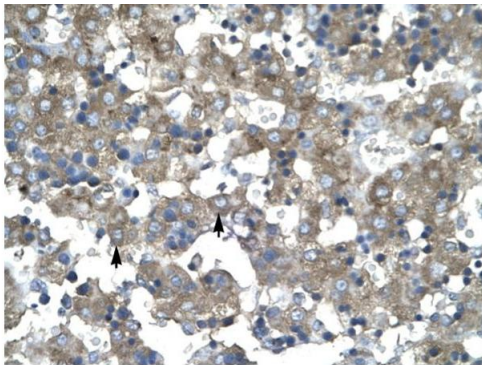
Handling

Format:	Liquid
Concentration:	Lot specific
Buffer:	Liquid. Purified antibody supplied in 1x PBS buffer with 0.09 % (w/v) sodium azide and 2 % sucrose.
Preservative:	Sodium azide
Precaution of Use:	This product contains Sodium azide: a POISONOUS AND HAZARDOUS SUBSTANCE which should be handled by trained staff only.
Handling Advice:	Avoid repeated freeze-thaw cycles.
Storage:	-20 °C
Storage Comment:	For short term use, store at 2-8°C up to 1 week. For long term storage, store at -20°C in small aliquots to prevent freeze-thaw cycles.



Western Blotting

Image 1. WB Suggested Anti-KLF15 Antibody Titration: 1.0-2.0ug/ml Positive Control: HepG2 cell lysate



Immunohistochemistry

Image 2. Human Liver

Rabbit Anti-KLF15 Antibody
Catalog Number: ARP32587
Lot Number: QC2029
Paraffin Embedded Tissue: Human Liver
Cells with Positive label: Hepatocytes (Indicated with Arrows)
Antibody Concentration: 4.0-8.0 μ g/ml
Magnification: 400X