

Datasheet for ABIN2779737
anti-CHEK1 antibody (Middle Region)

7 Images

[Go to Product page](#)

Overview

Quantity:	100 µL
Target:	CHEK1
Binding Specificity:	Middle Region
Reactivity:	Human, Mouse, Rat, Dog, Rabbit, Cow, Horse, Guinea Pig
Host:	Rabbit
Clonality:	Polyclonal
Conjugate:	This CHEK1 antibody is un-conjugated
Application:	Western Blotting (WB), Immunohistochemistry (IHC)

Product Details

Immunogen:	The immunogen is a synthetic peptide directed towards the middle region of human CHEK1
Sequence:	SARITIPDIK KDRWYNKPLK KGAKRPRVTS GGVSESPSGF SKHIQSNLDF
Predicted Reactivity:	Cow: 93%, Dog: 100%, Guinea Pig: 100%, Horse: 100%, Human: 100%, Mouse: 100%, Rabbit: 100%, Rat: 100%
Characteristics:	This is a rabbit polyclonal antibody against CHEK1. It was validated on Western Blot using a cell lysate as a positive control.
Purification:	Affinity Purified

Target Details

Target:	CHEK1
---------	-------

Target Details

Alternative Name:	CHEK1 (CHEK1 Products)
Background:	<p>CHEK1 is required during normal S phase to avoid aberrantly increased initiation of DNA replication, thereby protecting against DNA breakage. Its expression is dispensable for somatic cell death and critical for sustaining G2 DNA damage checkpoint.</p> <p>Alias Symbols: CHK1</p> <p>Protein Interaction Partner: RELA, CUL4A, UBC, SETMAR, DDB1, TNRC6B, ATR, HECW2, CLSPN, DTL, BTG3, TOPBP1, MAPKAPK2, HSP90AA1, CDC25C, RAD51, PIGM, CUL1, VCP, CDC25A, ATM, APP, MED15, NEK2, TLK1, RB1, BRCA1, FEM1B, XIAP, COPS5, MEPE, LATS2, TP53, Chek1, MEN1, USP7, DNMT1, FANCE, PCNA</p> <p>Protein Size: 476</p>
Molecular Weight:	54 kDa
Gene ID:	1111
NCBI Accession:	NM_001274 , NP_001265
UniProt:	O14757
Pathways:	p53 Signaling , Apoptosis , Cell Division Cycle , DNA Damage Repair

Application Details

Application Notes:	Optimal working dilutions should be determined experimentally by the investigator.
Comment:	Antigen size: 476 AA
Restrictions:	For Research Use only

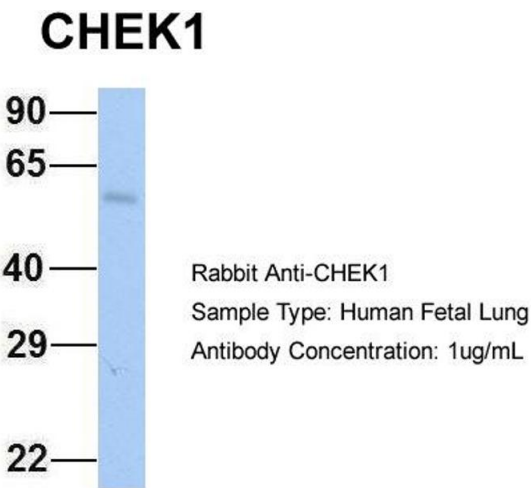
Handling

Format:	Liquid
Concentration:	Lot specific
Buffer:	Liquid. Purified antibody supplied in 1x PBS buffer with 0.09 % (w/v) sodium azide and 2 % sucrose.
Preservative:	Sodium azide
Precaution of Use:	This product contains Sodium azide: a POISONOUS AND HAZARDOUS SUBSTANCE which should be handled by trained staff only.
Handling Advice:	Avoid repeated freeze-thaw cycles.

Handling

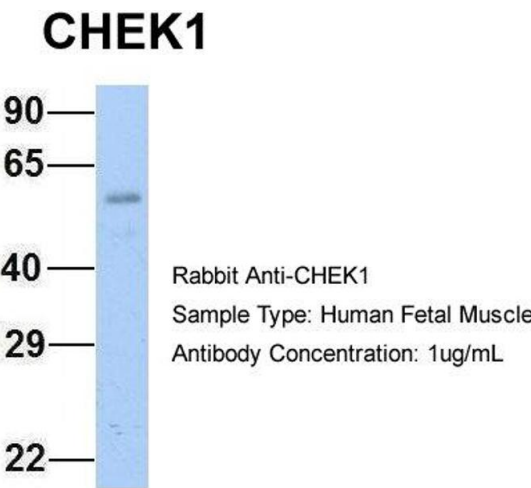
Storage:	-20 °C
Storage Comment:	For short term use, store at 2-8°C up to 1 week. For long term storage, store at -20°C in small aliquots to prevent freeze-thaw cycles.

Images



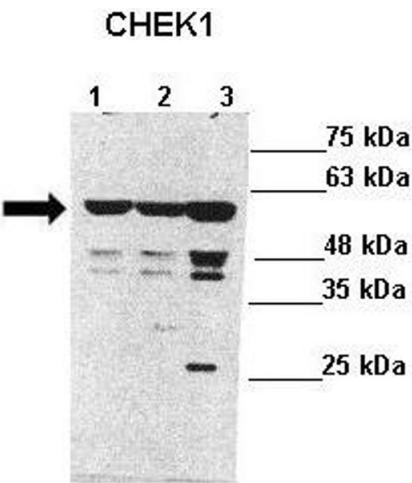
Western Blotting

Image 1. Host: Rabbit Target Name: CHEK1 Sample Type: Human Fetal Lung Antibody Dilution: 1.0ug/ml



Western Blotting

Image 2. Host: Rabbit Target Name: CHEK1 Sample Type: Human Fetal Muscle Antibody Dilution: 1.0ug/ml



Western Blotting

Image 3. Lanes : Lane 1: 40ug SH-SY5Y lysateLane 2: 40ug SH-SY5Y lysateLane 3: 40ug HEK293T lysate Primary Antibody Dilution : 1:1000 Secondary Antibody : Anti-rabbit-HRP Secondary Antibody Dilution : 1:8000 Gene Name : CHEK1 Submitted by : Anonymous

Please check the [product details page](#) for more images. Overall 7 images are available for ABIN2779737.