



Datasheet for ABIN2779744

anti-Activator of Basal Transcription 1 antibody (Middle Region)



[Go to Product page](#)

3 Images

Overview

Quantity:	100 µL
Target:	Activator of Basal Transcription 1 (Abt1)
Binding Specificity:	Middle Region
Reactivity:	Human, Mouse, Rat, Cow, Rabbit, Dog, Horse, Guinea Pig, Zebrafish (Danio rerio)
Host:	Rabbit
Clonality:	Polyclonal
Conjugate:	This Activator of Basal Transcription 1 antibody is un-conjugated
Application:	Western Blotting (WB), Immunohistochemistry (IHC)

Product Details

Immunogen:	The immunogen is a synthetic peptide directed towards the middle region of human ABT1
Sequence:	EVAQAKRETD FYLQSVERGQ RFLAADGDPA RPDGSWTFAQ RPTEQELRAR
Predicted Reactivity:	Cow: 93%, Dog: 93%, Guinea Pig: 93%, Horse: 100%, Human: 100%, Mouse: 86%, Rabbit: 93%, Rat: 93%, Zebrafish: 77%
Characteristics:	This is a rabbit polyclonal antibody against ABT1. It was validated on Western Blot and immunohistochemistry.
Purification:	Protein A purified

Target Details

Target:	Activator of Basal Transcription 1 (Abt1)
---------	---

Target Details

Alternative Name:	ABT1 (Abt1 Products)
Background:	<p>Basal transcription of genes by RNA polymerase II requires the interaction of TATA-binding protein (TBP) with the core region of class II promoters. Studies in mouse suggest that the protein encoded by ABT1 likely activates basal transcription from class II promoters by interaction with TBP and the class II promoter DNA.</p> <p>Alias Symbols: hABT1</p> <p>Protein Interaction Partner: FAM9B, SYNE4, LZTS2, CEP70, CCDC136, CDCA7L, EMD, UBC, PPP1CC, CAND1, PRNP, TBP,</p> <p>Protein Size: 272</p>
Molecular Weight:	31 kDa
Gene ID:	29777
NCBI Accession:	NM_013375 , NP_037507
UniProt:	Q9ULW3

Application Details

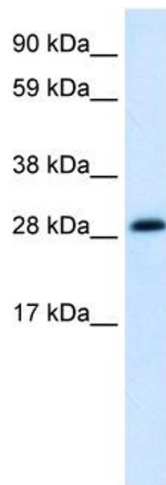
Application Notes:	Optimal working dilutions should be determined experimentally by the investigator.
Comment:	Antigen size: 272 AA
Restrictions:	For Research Use only

Handling

Format:	Liquid
Concentration:	Lot specific
Buffer:	Liquid. Purified antibody supplied in 1x PBS buffer with 0.09 % (w/v) sodium azide and 2 % sucrose.
Preservative:	Sodium azide
Precaution of Use:	This product contains Sodium azide: a POISONOUS AND HAZARDOUS SUBSTANCE which should be handled by trained staff only.
Handling Advice:	Avoid repeated freeze-thaw cycles.
Storage:	-20 °C
Storage Comment:	For short term use, store at 2-8°C up to 1 week. For long term storage, store at -20°C in small

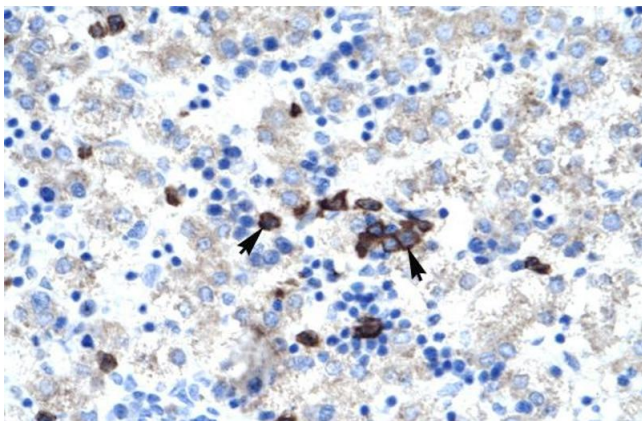
aliquots to prevent freeze-thaw cycles.

Images



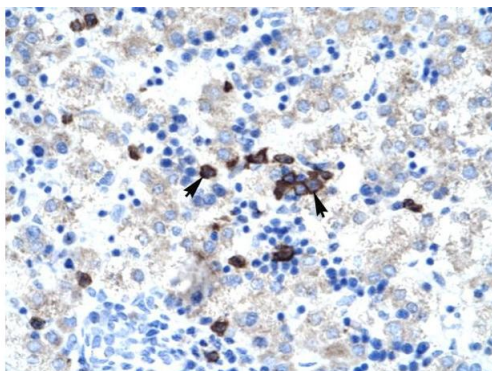
Western Blotting

Image 1. WB Suggested Anti-ABT1 Antibody Titration: 1.25ug/ml Positive Control: Human heart



Immunohistochemistry

Image 2. Human kidney



Immunohistochemistry

Image 3. Human kidney

Rabbit Anti- ABT1 Antibody
Catalog Number: ARP32603
Lot Number: QC2044
Paraffin Embedded Tissue: Human Liver
Cells with Positive label: Liver cells (Indicated with Arrows)
Antibody Concentration: 4.0-8.0 µg/ml
Magnification: 400X