

Datasheet for ABIN2779747
anti-HCFC2 antibody (C-Term)[Go to Product page](#)

1 Image

Overview

Quantity:	100 µL
Target:	HCFC2
Binding Specificity:	C-Term
Reactivity:	Human, Mouse, Rat, Cow, Dog, Horse, Pig, Rabbit, Guinea Pig
Host:	Rabbit
Clonality:	Polyclonal
Conjugate:	This HCFC2 antibody is un-conjugated
Application:	Western Blotting (WB)

Product Details

Immunogen:	The immunogen is a synthetic peptide directed towards the C terminal region of human HCFC2
Sequence:	STKSEVDETY ALPATKISRV ETHATATPFS KETPSNPVAT VKAGERQWCD
Predicted Reactivity:	Cow: 93%, Dog: 93%, Guinea Pig: 92%, Horse: 86%, Human: 100%, Mouse: 86%, Pig: 93%, Rabbit: 93%, Rat: 93%
Characteristics:	This is a rabbit polyclonal antibody against HCFC2. It was validated on Western Blot using a cell lysate as a positive control.
Purification:	Affinity Purified

Target Details

Target:	HCFC2
---------	-------

Target Details

Alternative Name:	HCFC2 (HCFC2 Products)
Background:	<p>HCFC2 is one of two proteins which interact with VP16, a herpes simplex virus protein that initiates virus infection. Both the encoded protein and the original Herpes host cell factor interact with VP16 through a beta-propeller domain. The original Herpes host cell factor, however, is effective at initiating viral infection while the encoded protein is not. This gene encodes one of two proteins which interact with VP16, a herpes simplex virus protein that initiates virus infection. Both the encoded protein and the original Herpes host cell factor interact with VP16 through a beta-propeller domain. The original Herpes host cell factor, however, is effective at initiating viral infection while the encoded protein is not. Transcripts of varying length due to alternative polyadenylation signals have been described.</p> <p>Alias Symbols: HCF-2, HCF2</p> <p>Protein Interaction Partner: HHV8GK18_gp81, ASH2L, IRF2, KMT2A, WDR5, RBBP5, MEN1, HCFC1,</p> <p>Protein Size: 792</p>
Molecular Weight:	87 kDa
Gene ID:	29915
NCBI Accession:	NM_013320 , NP_037452
UniProt:	Q9Y5Z7

Application Details

Application Notes:	Optimal working dilutions should be determined experimentally by the investigator.
Comment:	Antigen size: 792 AA
Restrictions:	For Research Use only

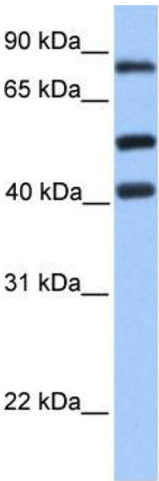
Handling

Format:	Liquid
Concentration:	Lot specific
Buffer:	Liquid. Purified antibody supplied in 1x PBS buffer with 0.09 % (w/v) sodium azide and 2 % sucrose.
Preservative:	Sodium azide
Precaution of Use:	This product contains Sodium azide: a POISONOUS AND HAZARDOUS SUBSTANCE which

Handling

	should be handled by trained staff only.
Handling Advice:	Avoid repeated freeze-thaw cycles.
Storage:	-20 °C
Storage Comment:	For short term use, store at 2-8°C up to 1 week. For long term storage, store at -20°C in small aliquots to prevent freeze-thaw cycles.

Images



Western Blotting

Image 1. WB Suggested Anti-HCFC2 Antibody Titration: 0.2-1 ug/ml Positive Control: Jurkat cell lysate