

Datasheet for ABIN2779748

anti-Ceramide Synthase 2 antibody (N-Term)**2** Images[Go to Product page](#)

Overview

Quantity:	100 µL
Target:	Ceramide Synthase 2 (CERS2)
Binding Specificity:	N-Term
Reactivity:	Human, Mouse, Rat, Cow, Horse, Guinea Pig, Rabbit, Dog
Host:	Rabbit
Clonality:	Polyclonal
Conjugate:	This Ceramide Synthase 2 antibody is un-conjugated
Application:	Western Blotting (WB), Immunohistochemistry (IHC)

Product Details

Immunogen:	The immunogen is a synthetic peptide directed towards the N terminal region of human LASS2
Sequence:	EKTRLRAPPN ATLEHFYLTG GKQPKQVEVE LLSRQSGLSG RQVERWFRRR
Predicted Reactivity:	Cow: 86%, Dog: 93%, Guinea Pig: 100%, Horse: 92%, Human: 100%, Mouse: 93%, Rabbit: 93%, Rat: 93%
Characteristics:	This is a rabbit polyclonal antibody against LASS2. It was validated on Western Blot using a cell lysate as a positive control.
Purification:	Affinity Purified

Target Details

Target:	Ceramide Synthase 2 (CERS2)
---------	-----------------------------

Target Details

Alternative Name:	LASS2 (CERS2 Products)
Background:	<p>LASS2 is a protein that has sequence similarity to yeast longevity assurance gene 1. Mutation or overexpression of the related gene in yeast has been shown to alter yeast lifespan. The human protein may play a role in the regulation of cell growth. This gene encodes a protein that has sequence similarity to yeast longevity assurance gene 1. Mutation or overexpression of the related gene in yeast has been shown to alter yeast lifespan. The human protein may play a role in the regulation of cell growth. Alternatively spliced transcript variants encoding the same protein have been described.</p> <p>Alias Symbols: CerS2, FLJ10243, L3, MGC987, SP260, TMSG1, LASS2</p> <p>Protein Interaction Partner: HSP90AA1, ELOVL3, ELOVL7, ELOVL6, ELOVL1, ELOVL5, ELOVL2, HSD17B12, TECR, ELOVL4, vpu, SLC39A1, SLC19A2, UBC, TMBIM6, SLC22A1, PEX6, ATP6V0C, ASGR2, ASGR1, FLOT1, FUBP1, NDN,</p> <p>Protein Size: 380</p>
Molecular Weight:	45 kDa
Gene ID:	29956
NCBI Accession:	NM_022075 , NP_071358
UniProt:	Q96G23

Application Details

Application Notes:	Optimal working dilutions should be determined experimentally by the investigator.
Comment:	Antigen size: 380 AA
Restrictions:	For Research Use only

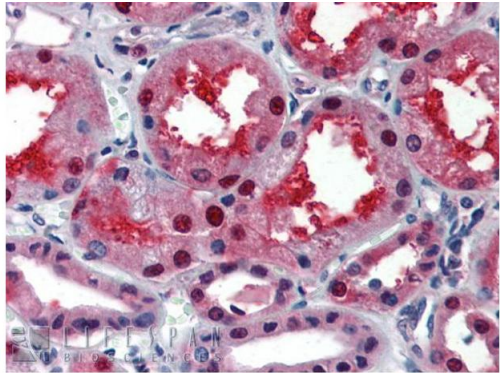
Handling

Format:	Liquid
Concentration:	Lot specific
Buffer:	Liquid. Purified antibody supplied in 1x PBS buffer with 0.09 % (w/v) sodium azide and 2 % sucrose.
Preservative:	Sodium azide
Precaution of Use:	This product contains Sodium azide: a POISONOUS AND HAZARDOUS SUBSTANCE which should be handled by trained staff only.

Handling

Handling Advice:	Avoid repeated freeze-thaw cycles.
Storage:	-20 °C
Storage Comment:	For short term use, store at 2-8°C up to 1 week. For long term storage, store at -20°C in small aliquots to prevent freeze-thaw cycles.

Images

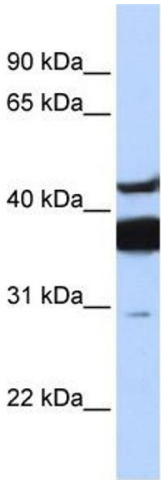


Rabbit Anti-LASS2 Antibody
Catalog Number: ARP32609
Lot Number: QC2051
Paraffin Embedded Tissue: Human Kidney
Antibody Concentration: 5.0 µg/ml

Data courtesy of Lifespan Biosciences, Inc.

Immunohistochemistry

Image 1. Immunohistochemistry with Human kidney lysate tissue at an antibody concentration of 5.0ug/ml using anti-LASS2 antibody



Western Blotting

Image 2. WB Suggested Anti-LASS2 Antibody Titration: 0.2-1 ug/ml ELISA Titer: 1:312500 Positive Control: Human brain