

Datasheet for ABIN2779750
anti-T-Bet antibody (Middle Region)

4 Images

[Go to Product page](#)

Overview

Quantity:	100 µL
Target:	T-Bet
Binding Specificity:	Middle Region
Reactivity:	Human, Mouse, Rat, Cow, Dog, Pig, Rabbit, Guinea Pig
Host:	Rabbit
Clonality:	Polyclonal
Conjugate:	This T-Bet antibody is un-conjugated
Application:	Western Blotting (WB), Immunohistochemistry (IHC)

Product Details

Immunogen:	The immunogen is a synthetic peptide directed towards the middle region of human TBX21
Sequence:	SIPSPPGPNC QFLGGDHYSP LLPNQYPVPS RFYPDLPGQA KDVVPQAYWL
Predicted Reactivity:	Cow: 100%, Dog: 100%, Guinea Pig: 86%, Human: 100%, Mouse: 93%, Pig: 100%, Rabbit: 86%, Rat: 86%
Characteristics:	This is a rabbit polyclonal antibody against TBX21. It was validated on Western Blot and immunohistochemistry.
Purification:	Affinity Purified

Target Details

Target:	T-Bet
---------	-------

Target Details

Alternative Name:	TBX21 (T-Bet Products)
Background:	<p>TBX21 is a member of a phylogenetically conserved family of genes that share a common DNA-binding domain, the T-box. T-box genes encode transcription factors involved in the regulation of developmental processes. It is the human ortholog of mouse Tbx21/Tbet gene. Studies in mouse show that Tbx21 protein is a Th1 cell-specific transcription factor that controls the expression of the hallmark Th1 cytokine, interferon-gamma (IFNG). Expression of the human ortholog also correlates with IFNG expression in Th1 and natural killer cells, suggesting a role for this gene in initiating Th1 lineage development from naive Th precursor cells.</p> <p>Alias Symbols: HGNC:11599, T-PET, T-bet, TBLYM, TBET</p> <p>Protein Interaction Partner: USP10, UBC, EXOC5, ZNF490, SP1, HOXC11, GATA3, EP300, CREBBP,</p> <p>Protein Size: 535</p>
Molecular Weight:	58 kDa
Gene ID:	30009
NCBI Accession:	NM_013351 , NP_037483
UniProt:	Q9UL17

Application Details

Application Notes:	Optimal working dilutions should be determined experimentally by the investigator.
Comment:	Antigen size: 535 AA
Restrictions:	For Research Use only

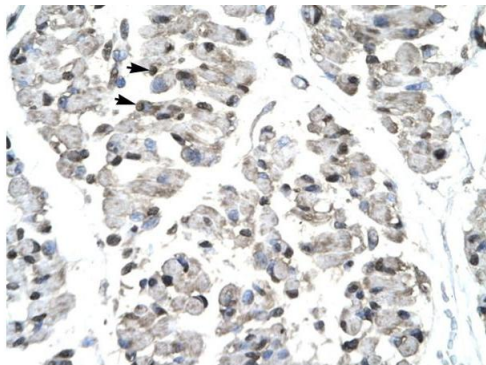
Handling

Format:	Liquid
Concentration:	Lot specific
Buffer:	Liquid. Purified antibody supplied in 1x PBS buffer with 0.09 % (w/v) sodium azide and 2 % sucrose.
Preservative:	Sodium azide
Precaution of Use:	This product contains Sodium azide: a POISONOUS AND HAZARDOUS SUBSTANCE which should be handled by trained staff only.

Handling

Handling Advice:	Avoid repeated freeze-thaw cycles.
Storage:	-20 °C
Storage Comment:	For short term use, store at 2-8°C up to 1 week. For long term storage, store at -20°C in small aliquots to prevent freeze-thaw cycles.

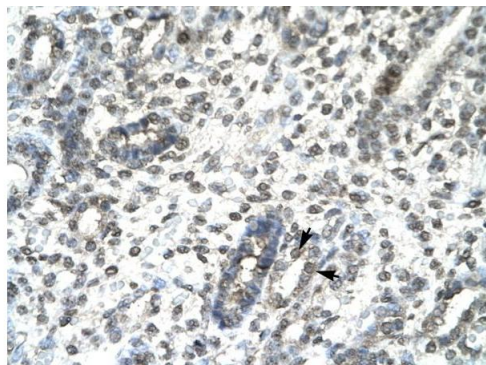
Images



Rabbit Anti-TBX21 Antibody
Catalog Number: ARP32612
Lot Number: QC2053
Paraffin Embedded Tissue: Human Skeletal Muscle
Cells with Positive label: Skeletal muscle cells (Indicated with Arrows)
Antibody Concentration: 4.0-8.0 µg/ml
Magnification: 400X

Immunohistochemistry

Image 1. Human Skeletal Muscle



Rabbit Anti-TBX21 Antibody
Catalog Number: ARP32612
Lot Number: QC2053
Paraffin Embedded Tissue: Human Kidney
Cells with Positive label: Epithelial cells of renal tubule (Indicated with Arrows)
Antibody Concentration: 4.0-8.0 µg/ml
Magnification: 400X

Immunohistochemistry

Image 2. Human kidney



Western Blotting

Image 3. WB Suggested Anti-TBX21 Antibody Titration: 0.2-1 ug/ml Positive Control: Human Liver

Please check the [product details page](#) for more images. Overall 4 images are available for ABIN2779750.