

Datasheet for ABIN2779762
anti-FOXA1 antibody (C-Term)

6 Images

[Go to Product page](#)

Overview

Quantity:	100 µL
Target:	FOXA1
Binding Specificity:	C-Term
Reactivity:	Human, Rat, Mouse, Dog, Cow, Zebrafish (Danio rerio), Guinea Pig, Saccharomyces cerevisiae
Host:	Rabbit
Clonality:	Polyclonal
Conjugate:	This FOXA1 antibody is un-conjugated
Application:	Western Blotting (WB), Immunohistochemistry (IHC)

Product Details

Immunogen:	The immunogen is a synthetic peptide directed towards the C terminal region of human FOXA1
Sequence:	SFNHPFSINN LMSSEQQHK LDFKAYEQAL QSPYGSTLP ASLPLGSASV
Predicted Reactivity:	Cow: 100%, Dog: 100%, Guinea Pig: 100%, Human: 100%, Mouse: 100%, Rat: 100%, Yeast: 83%, Zebrafish: 86%
Characteristics:	This is a rabbit polyclonal antibody against FOXA1. It was validated on Western Blot using a cell lysate as a positive control.
Purification:	Affinity Purified

Target Details

Target:	FOXA1
---------	-------

Target Details

Alternative Name:	FOXA1 (FOXA1 Products)
Background:	<p>FOXA1 is a member of the forkhead class of DNA-binding proteins. These hepatocyte nuclear factors are transcriptional activators for liver-specific transcripts such as albumin and transthyretin, and they also interact with chromatin. Similar family members in mice have roles in the regulation of metabolism and in the differentiation of the pancreas and liver. This gene encodes a member of the forkhead class of DNA-binding proteins. These hepatocyte nuclear factors are transcriptional activators for liver-specific transcripts such as albumin and transthyretin, and they also interact with chromatin. Similar family members in mice have roles in the regulation of metabolism and in the differentiation of the pancreas and liver.</p> <p>Alias Symbols: HNF3A, TCF3A</p> <p>Protein Interaction Partner: EED, SEZ6L2, AHR, ELAVL1, SUMO2, TLE1, HDAC7, HIST3H3, AR, ONECUT1, DSCAM, NRIP1, XBP1, TFF1,</p> <p>Protein Size: 472</p>
Molecular Weight:	49 kDa
Gene ID:	3169
NCBI Accession:	NM_004496 , NP_004487
UniProt:	Q0JTB6
Pathways:	Intracellular Steroid Hormone Receptor Signaling Pathway , Regulation of Intracellular Steroid Hormone Receptor Signaling , Carbohydrate Homeostasis

Application Details

Application Notes:	Optimal working dilutions should be determined experimentally by the investigator.
Comment:	Antigen size: 472 AA
Restrictions:	For Research Use only

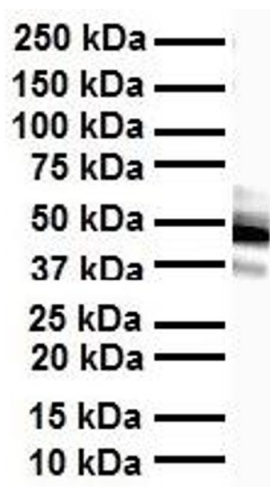
Handling

Format:	Liquid
Concentration:	Lot specific
Buffer:	Liquid. Purified antibody supplied in 1x PBS buffer with 0.09 % (w/v) sodium azide and 2 % sucrose.
Preservative:	Sodium azide

Handling

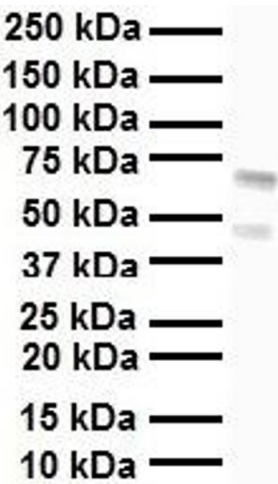
Precaution of Use:	This product contains Sodium azide: a POISONOUS AND HAZARDOUS SUBSTANCE which should be handled by trained staff only.
Handling Advice:	Avoid repeated freeze-thaw cycles.
Storage:	-20 °C
Storage Comment:	For short term use, store at 2-8°C up to 1 week. For long term storage, store at -20°C in small aliquots to prevent freeze-thaw cycles.

Images



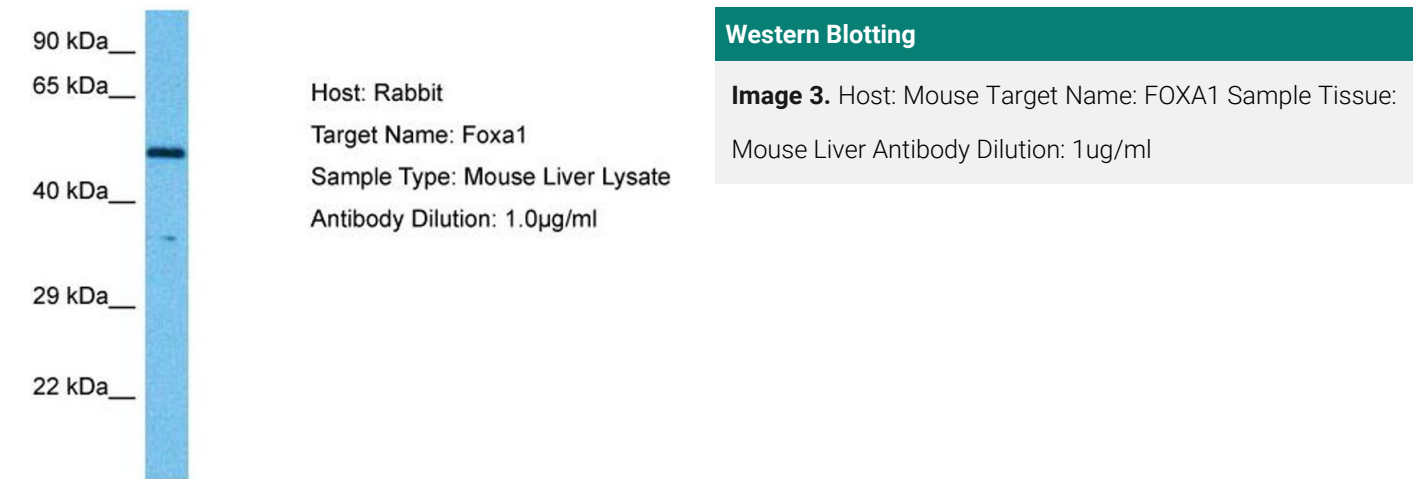
Western Blotting

Image 1. WB Suggested Anti-FOXA1 antibody Titration: 1 ug/mL Sample Type: Human heart



Western Blotting

Image 2. WB Suggested Anti-FOXA1 antibody Titration: 1 ug/mL Sample Type: Human liver



Please check the [product details page](#) for more images. Overall 6 images are available for ABIN2779762.