

Datasheet for ABIN2779777  
**anti-AIRE antibody (N-Term)**

## 5 Images

[Go to Product page](#)

## Overview

Quantity:	100 µL
Target:	AIRE
Binding Specificity:	N-Term
Reactivity:	Human, Mouse, Rat, Dog, Horse, Cow, Guinea Pig
Host:	Rabbit
Clonality:	Polyclonal
Conjugate:	This AIRE antibody is un-conjugated
Application:	Western Blotting (WB), Immunohistochemistry (IHC)

## Product Details

Immunogen:	The immunogen is a synthetic peptide directed towards the N terminal region of human AIRE
Sequence:	HRTEIAVAVD SAFPLLHALA DHDVVPEDKF QETLHLKEKE GCPQAFHALL
Predicted Reactivity:	Cow: 92%, Dog: 100%, Guinea Pig: 100%, Horse: 100%, Human: 100%, Mouse: 100%, Rat: 100%
Characteristics:	This is a rabbit polyclonal antibody against AIRE. It was validated on Western Blot and immunohistochemistry.
Purification:	Affinity Purified

## Target Details

Target:	AIRE
Alternative Name:	AIRE ( <a href="#">AIRE Products</a> )

## Target Details

Background:	<p>The function of the protein encoded by the AIRE gene is not well defined. However it contains zinc finger motifs suggestive of a transcription factor. The protein (isoform 1) is localized to both the nucleus and cytoplasm. Defects in this gene cause the autosomal-recessive systemic autoimmune disease termed autoimmune polyendocrinopathy-candidiasis-ectodermal dystrophy (APECED). This gene encodes a transcriptional regulator that forms nuclear bodies and interacts with the transcriptional coactivator CBP. At least three splice variant mRNAs products have been described including one which results in a premature stop codon and a transcript predicted to be a candidate for nuclear-mediated decay (NMD). Defects in this gene cause the rare autosomal-recessive systemic autoimmune disease termed autoimmune polyendocrinopathy-candidiasis-ectodermal dystrophy (APECED).</p> <p>Alias Symbols: AIRE1, APECED, APS1, APSI, PGA1</p> <p>Protein Interaction Partner: TUBB, RAVR1, TUBA1C, TMPRSS13, CCDC87, FAT1, GIGYF2, SRRM2, TUBB4B, EIF4EBP3, UBB, HSP90AB1, HSPA8, HSPA5, HSPA1L, HSPA1A, ATP4A, HIST3H3, HDAC2, HDAC1, DAXX, AIRE, UBAC1, HIST1H3A, HIST2H2BE, HSPA4, SRSF1, SMC1A, XP01, TOP2A, SSRP1, SNRPD3, SNRPB, SRSF3</p> <p>Protein Size: 545</p>
Molecular Weight:	58 kDa
Gene ID:	326
NCBI Accession:	<a href="#">NM_000383</a> , <a href="#">NP_000374</a>
UniProt:	<a href="#">O43918</a>
Pathways:	<a href="#">Chromatin Binding</a>

## Application Details

Application Notes:	Optimal working dilutions should be determined experimentally by the investigator.
Comment:	Antigen size: 545 AA
Restrictions:	For Research Use only

## Handling

Format:	Liquid
Concentration:	Lot specific
Buffer:	Liquid. Purified antibody supplied in 1x PBS buffer with 0.09 % (w/v) sodium azide and 2 % sucrose.

Handling

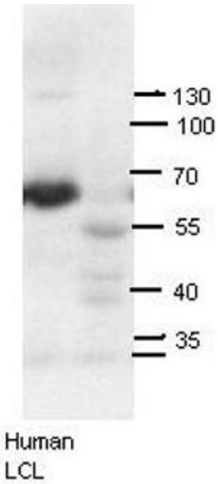
Preservative:	Sodium azide
Precaution of Use:	This product contains Sodium azide: a POISONOUS AND HAZARDOUS SUBSTANCE which should be handled by trained staff only.
Handling Advice:	Avoid repeated freeze-thaw cycles.
Storage:	-20 °C
Storage Comment:	For short term use, store at 2-8°C up to 1 week. For long term storage, store at -20°C in small aliquots to prevent freeze-thaw cycles.

Images



**Western Blotting**

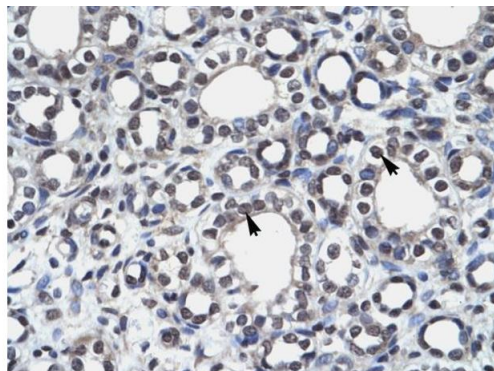
**Image 1.** WB Suggested Anti-AIRE Antibody Titration: 0.2-1 ug/ml ELISA Titer: 1:1562500 Positive Control: Human Liver



**AIRE (ARP32650\_P050)**

Western Blot  
Lane 1: Human LCL  
1:1000 dilution with 5% milk

**Image 2.**



Rabbit Anti-AIRE Antibody  
Catalog Number: ARP32650  
Lot Number: QC2086  
Paraffin Embedded Tissue: Human Kidney  
Cells with Positive label: Epithelial cells of renal tubule(Indicated with Arrows)  
Antibody Concentration: 4.0-8.0 µg/ml  
Magnification: 400X

### Immunohistochemistry

**Image 3.** Rabbit Anti-AIRE Antibody Paraffin Embedded  
Tissue: Human Kidney Cellular Data: Epithelial cells of renal  
tubule Antibody Concentration: 4.0-8.0 ug/ml Magnification:  
400X

Please check the [product details page](#) for more images. Overall 5 images are available for ABIN2779777.