

Datasheet for ABIN2779793
anti-LMX1A antibody (N-Term)



[Go to Product page](#)

1 Image

Overview

Quantity:	100 µL
Target:	LMX1A
Binding Specificity:	N-Term
Reactivity:	Human, Mouse, Rat, Dog, Horse, Cow, Guinea Pig, Rabbit
Host:	Rabbit
Clonality:	Polyclonal
Conjugate:	This LMX1A antibody is un-conjugated
Application:	Western Blotting (WB)

Product Details

Immunogen:	The immunogen is a synthetic peptide directed towards the N terminal region of human LMX1A
Sequence:	LDGLKMEENF QSAIDTSASF SSLLGRAVSP KSVCEGCQRV ILDRFLLRLN
Predicted Reactivity:	Cow: 93%, Dog: 93%, Guinea Pig: 93%, Horse: 86%, Human: 100%, Mouse: 93%, Rabbit: 93%, Rat: 93%
Characteristics:	This is a rabbit polyclonal antibody against LMX1A. It was validated on Western Blot using a cell lysate as a positive control.
Purification:	Affinity Purified

Target Details

Target:	LMX1A
---------	-------

Target Details

Alternative Name:	LMX1A (LMX1A Products)
Background:	<p>Insulin is produced exclusively by the beta cells in the islets of Langerhans in the pancreas. The level and beta-cell specificity of insulin gene expression are regulated by a set of nuclear genes that bind to specific sequences within the promoter of the insulin gene and interact with RNA polymerase to activate or repress transcription. LMX1 is a homeodomain protein that binds an A/T-rich sequence in the insulin promoter and stimulates transcription of insulin. Insulin is produced exclusively by the beta cells in the islets of Langerhans in the pancreas. The level and beta-cell specificity of insulin gene expression are regulated by a set of nuclear genes that bind to specific sequences within the promoter of the insulin gene (INS, MIM 176730) and interact with RNA polymerase to activate or repress transcription. LMX1 is a homeodomain protein that binds an A/T-rich sequence in the insulin promoter and stimulates transcription of insulin (German et al., 1994 [PubMed 7698771]). [supplied by OMIM]. PRIMARYREFSEQ_SPAN PRIMARY_IDENTIFIER PRIMARY_SPAN COMP 1-199 AL160058.8 14249-14447 c 200-2447 AK127724.1 362-2609 2448-3382 AL390730.12 9415-10349 c</p> <p>Alias Symbols: LMX-1, LMX1, LMX1.1, MGC87616</p> <p>Protein Interaction Partner: LDB1, BMPR2, ISL1, LHX3, LMX1A, TCF3,</p> <p>Protein Size: 382</p>
Molecular Weight:	43 kDa
Gene ID:	4009
NCBI Accession:	NM_177398 , NP_796372
UniProt:	Q8TE12
Pathways:	Dopaminergic Neurogenesis

Application Details

Application Notes:	Optimal working dilutions should be determined experimentally by the investigator.
Comment:	Antigen size: 382 AA
Restrictions:	For Research Use only

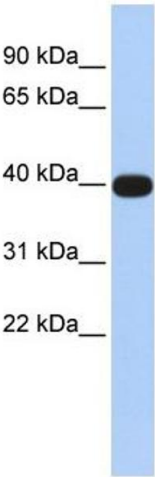
Handling

Format:	Liquid
Concentration:	Lot specific

Handling

Buffer:	Liquid. Purified antibody supplied in 1x PBS buffer with 0.09 % (w/v) sodium azide and 2 % sucrose.
Preservative:	Sodium azide
Precaution of Use:	This product contains Sodium azide: a POISONOUS AND HAZARDOUS SUBSTANCE which should be handled by trained staff only.
Handling Advice:	Avoid repeated freeze-thaw cycles.
Storage:	-20 °C
Storage Comment:	For short term use, store at 2-8°C up to 1 week. For long term storage, store at -20°C in small aliquots to prevent freeze-thaw cycles.

Images



Western Blotting

Image 1. WB Suggested Anti-LMX1A Antibody Titration: 0.2-1 ug/ml ELISA Titer: 1:12500 Positive Control: Human brain