

Datasheet for ABIN2779795  
**anti-TSFM antibody (N-Term)**[Go to Product page](#)

## 2 Images

## Overview

Quantity:	100 µL
Target:	TSFM
Binding Specificity:	N-Term
Reactivity:	Human, Mouse, Rat, Rabbit, Cow, Dog, Guinea Pig, Horse, Zebrafish (Danio rerio)
Host:	Rabbit
Clonality:	Polyclonal
Conjugate:	This TSFM antibody is un-conjugated
Application:	Western Blotting (WB), Immunohistochemistry (IHC)

## Product Details

Immunogen:	The immunogen is a synthetic peptide directed towards the N terminal region of human TSFM
Sequence:	KQAEIWLHKE AQKEGWSKAA KLQGRKTKEG LIGLLQEGNT TVLVEVNCET
Predicted Reactivity:	Cow: 93%, Dog: 93%, Guinea Pig: 93%, Horse: 93%, Human: 100%, Mouse: 93%, Rabbit: 86%, Rat: 93%, Zebrafish: 77%
Characteristics:	This is a rabbit polyclonal antibody against TSFM. It was validated on Western Blot and immunohistochemistry.
Purification:	Affinity Purified

## Target Details

Target:	TSFM
---------	------

## Target Details

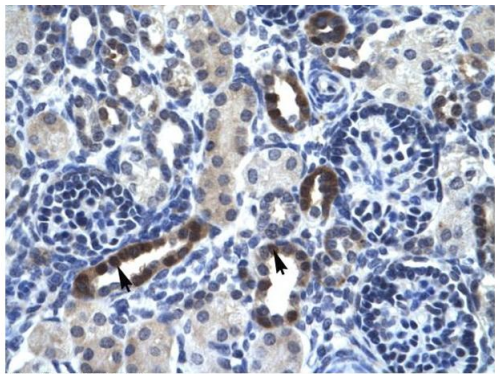
Alternative Name:	TSFM ( <a href="#">TSFM Products</a> )
Background:	<p>The TSFM gene encodes a protein that is expressed in all tissues, with the highest levels of expression in skeletal muscle, liver, and kidney.</p> <p>Alias Symbols: EFTS, EFTSMT</p> <p>Protein Interaction Partner: UBC, SUMO2, LIG4, C1QBP, MRRF, ACOT13, CDV3, MTRNR2L1,</p> <p>Protein Size: 346</p>
Molecular Weight:	38 kDa
Gene ID:	10102
NCBI Accession:	<a href="#">NM_005726</a> , <a href="#">NP_005717</a>

## Application Details

Application Notes:	Optimal working dilutions should be determined experimentally by the investigator.
Comment:	Antigen size: 346 AA
Restrictions:	For Research Use only

## Handling

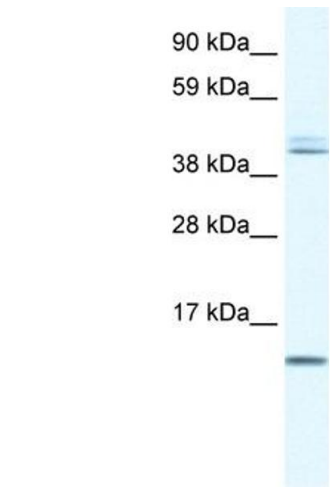
Format:	Liquid
Concentration:	Lot specific
Buffer:	Liquid. Purified antibody supplied in 1x PBS buffer with 0.09 % (w/v) sodium azide and 2 % sucrose.
Preservative:	Sodium azide
Precaution of Use:	This product contains Sodium azide: a POISONOUS AND HAZARDOUS SUBSTANCE which should be handled by trained staff only.
Handling Advice:	Avoid repeated freeze-thaw cycles.
Storage:	-20 °C
Storage Comment:	For short term use, store at 2-8°C up to 1 week. For long term storage, store at -20°C in small aliquots to prevent freeze-thaw cycles.



Rabbit Anti-TSFM Antibody  
Catalog Number: ARP32675  
Lot Number: QC2099  
Paraffin Embedded Tissue: Human Kidney  
Cells with Positive label: Epithelial cells of renal tubule (Indicated with Arrows)  
Antibody Concentration: 4.0-8.0 µg/ml  
Magnification: 400X

Immunohistochemistry

Image 1. Human kidney



Western Blotting

Image 2. WB Suggested Anti-TSFM Antibody Titration: 0.2-1 ug/ml Positive Control: Human Liver