

Datasheet for ABIN2779798  
**anti-RBM6 antibody (C-Term)**



[Go to Product page](#)

1 Image

## Overview

Quantity:	100 µL
Target:	RBM6
Binding Specificity:	C-Term
Reactivity:	Human, Mouse, Rat, Cow, Dog, Rabbit, Guinea Pig, Horse
Host:	Rabbit
Clonality:	Polyclonal
Conjugate:	This RBM6 antibody is un-conjugated
Application:	Western Blotting (WB)

## Product Details

Immunogen:	The immunogen is a synthetic peptide directed towards the C-terminal region of human RBM6
Sequence:	YGQSKSFPEG KTARDAQRDL QDQDYRTGPS EEKPSRLIRL SGVPEDATKE
Predicted Reactivity:	Cow: 100%, Dog: 93%, Guinea Pig: 100%, Horse: 93%, Human: 100%, Mouse: 100%, Rabbit: 86%, Rat: 100%
Characteristics:	This is a rabbit polyclonal antibody against RBM6. It was validated on Western Blot.
Purification:	Affinity Purified

## Target Details

Target:	RBM6
Alternative Name:	RBM6 ( <a href="#">RBM6 Products</a> )

## Target Details

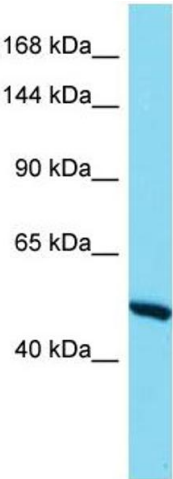
Background:	Alias Symbols: 3G2, g16, DEF3, DEF-3, HLC-11, NY-LU-12 Protein Size: 520
Molecular Weight:	57 kDa
Gene ID:	10180
NCBI Accession:	<a href="#">NM_001167582</a> , <a href="#">NP_001161054</a>
UniProt:	<a href="#">B4E0G6</a>

## Application Details

Application Notes:	Optimal working dilution should be determined by the investigator.
Restrictions:	For Research Use only

## Handling

Format:	Liquid
Concentration:	1 mg/mL
Buffer:	Liquid. Purified antibody supplied in 1x PBS buffer with 0.09 % (w/v) sodium azide and 2 % sucrose.
Preservative:	Sodium azide
Precaution of Use:	This product contains Sodium azide: a POISONOUS AND HAZARDOUS SUBSTANCE which should be handled by trained staff only.
Handling Advice:	Avoid repeat freeze-thaw cycles.
Storage:	-20 °C
Storage Comment:	For short term use, store at 2-8°C up to 1 week. For long term storage, store at -20°C in small aliquots to prevent freeze-thaw cycles.



Western Blotting

**Image 1.** Host: Rabbit Target Name: RBM6 Sample Type: Thyroid Tumor lysates Antibody Dilution: 1.0ug/ml