



Datasheet for ABIN2779804
anti-SMAD6 antibody (N-Term)



[Go to Product page](#)

4 Images

Overview

Quantity:	100 µL
Target:	SMAD6
Binding Specificity:	N-Term
Reactivity:	Human, Mouse, Rat, Cow, Pig, Dog, Guinea Pig, Horse, Zebrafish (Danio rerio)
Host:	Rabbit
Clonality:	Polyclonal
Conjugate:	This SMAD6 antibody is un-conjugated
Application:	Western Blotting (WB), Immunohistochemistry (IHC)

Product Details

Immunogen:	The immunogen is a synthetic peptide directed towards the N terminal region of human SMAD6
Sequence:	APRDASDPLA GAALEPAGGG RSREARSRL LLEQELKTVT YSLLKR
Predicted Reactivity:	Cow: 100%, Dog: 100%, Guinea Pig: 93%, Horse: 91%, Human: 100%, Mouse: 100%, Pig: 100%, Rat: 100%, Zebrafish: 86%
Characteristics:	This is a rabbit polyclonal antibody against SMAD6. It was validated on Western Blot and immunohistochemistry.
Purification:	Protein A purified

Target Details

Target:	SMAD6
---------	-------

Target Details

Alternative Name: SMAD6 ([SMAD6 Products](#))

Background: SMAD6 (mothers against decapentaplegic homolog 6) is an antagonist of signaling by TGF-beta (transforming growth factor) type 1 receptor superfamily members, has been shown to inhibit selectively BMP (bone morphogenetic proteins) signaling by competing with the co-SMAD SMAD4 for receptor-activated SMAD1. SMAD6 is an inhibitory SMAD (I-SMAD) or antagonistic SMAD.

Alias Symbols: MADH6, MADH7, HsT17432

Protein Interaction Partner: ITCH, SMURF2, BPIFA1, NEDD4L, WWP2, WWP1, USP15, USP11, PIGR, NASP, LYZ, KPNA2, CTBP2, CTBP1, UBC, ACVR1, UBE2O, BAMBI, STAMBP, ACTR1B, TGFB1, MYD88, SMAD1, BMPR2, BMPR1B, BMPR1A, ACVR2B, ACVR1B, SMURF1, PELI1, CUL2, ELAVL1, SMAD5, RPS6KA5, TSC22D1, MAPK

Protein Size: 496

Molecular Weight: 53 kDa

Gene ID: 4091

NCBI Accession: [NM_005585](#), [NP_005576](#)

UniProt: [O43541](#)

Pathways: [Chromatin Binding](#)

Application Details

Application Notes: Optimal working dilutions should be determined experimentally by the investigator.

Comment: Antigen size: 496 AA

Restrictions: For Research Use only

Handling

Format: Liquid

Concentration: Lot specific

Buffer: Liquid. Purified antibody supplied in 1x PBS buffer with 0.09 % (w/v) sodium azide and 2 % sucrose.

Preservative: Sodium azide

Precaution of Use: This product contains Sodium azide: a POISONOUS AND HAZARDOUS SUBSTANCE which should be handled by trained staff only.

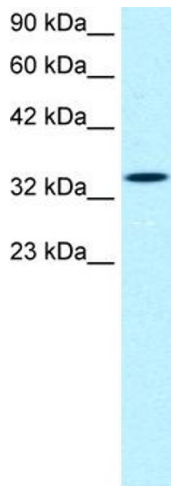
Handling

Handling Advice: Avoid repeated freeze-thaw cycles.

Storage: -20 °C

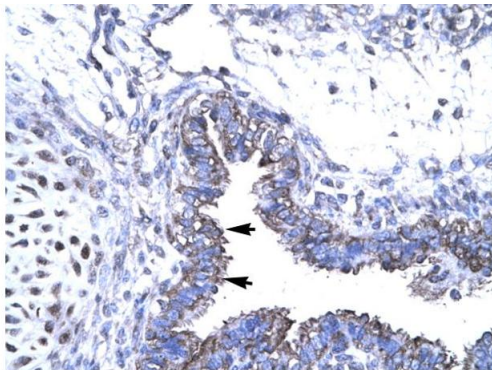
Storage Comment: For short term use, store at 2-8°C up to 1 week. For long term storage, store at -20°C in small aliquots to prevent freeze-thaw cycles.

Images



Western Blotting

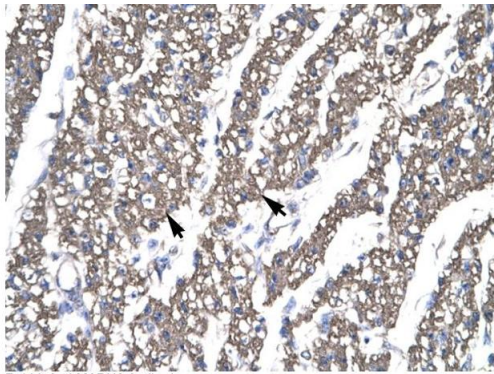
Image 1. WB Suggested Anti-SMAD6 Antibody Titration: 0.5-1.0ug/ml Positive Control: Jurkat cell lysate There is BioGPS gene expression data showing that SMAD6 is expressed in Jurkat



Rabbit Anti-MADH6 Antibody
Catalog Number: ARP32690
Lot Number: QC2114
Paraffin Embedded Tissue: Human Lung
Cells with Positive label: Epithelial cells of bronchiole (Indicated with Arrows)
Antibody Concentration: 4.0-8.0 µg/ml
Magnification: 400X

Immunohistochemistry

Image 2. Human Lung



Rabbit Anti-MADH6 Antibody
Catalog Number: ARP32690
Lot Number: QC2114
Paraffin Embedded Tissue: Human Heart
Cells with Positive label: Myocardiac cells (Indicated with Arrows)
Antibody Concentration: 4.0-8.0 µg/ml
Magnification: 400X

Immunohistochemistry

Image 3. Human Heart

Please check the [product details page](#) for more images. Overall 4 images are available for ABIN2779804.