



Datasheet for ABIN2779821
anti-NKX3-2 antibody (N-Term)



[Go to Product page](#)

2 Images

Overview

Quantity:	100 µL
Target:	NKX3-2
Binding Specificity:	N-Term
Reactivity:	Human, Mouse, Rat, Dog, Cow, Rabbit, Guinea Pig, Zebrafish (Danio rerio), Horse
Host:	Rabbit
Clonality:	Polyclonal
Conjugate:	This NKX3-2 antibody is un-conjugated
Application:	Western Blotting (WB)

Product Details

Immunogen:	The immunogen is a synthetic peptide directed towards the N terminal region of mouse Bapx1
Sequence:	MAVRGSGTLT PFSIQAILNK KEERGGLATP EGRPAPGGTE VAVTAAPAVC
Predicted Reactivity:	Cow: 100%, Dog: 100%, Guinea Pig: 100%, Horse: 83%, Human: 93%, Mouse: 100%, Rabbit: 100%, Rat: 83%, Zebrafish: 85%
Characteristics:	This is a rabbit polyclonal antibody against Bapx1. It was validated on Western Blot using a cell lysate as a positive control.
Purification:	Affinity Purified

Target Details

Target:	NKX3-2
---------	--------

Target Details

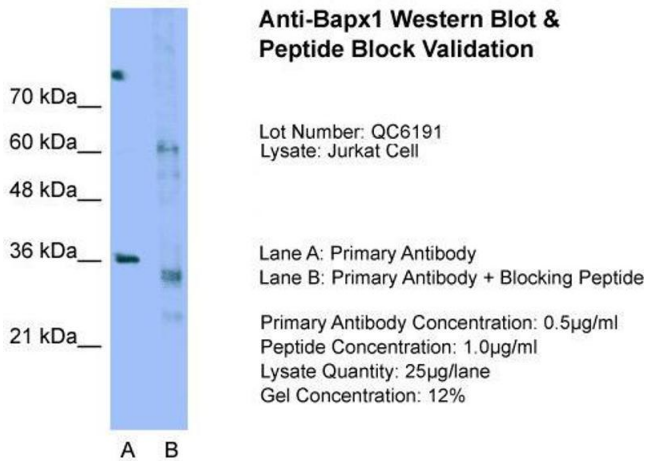
Alternative Name:	Bapx1 (NKX3-2 Products)
Background:	<p>Bapx1 acts as a negative regulator of chondrocyte maturation. The constitutive RelA activation mediated by Bapx1 controls chondrocyte viability.</p> <p>Alias Symbols: NKX3.2, Nkx-3.2, Nkx3-2, Bapx1</p> <p>Protein Interaction Partner: Ikbkg, Ikkkb, Btrc, UBC,</p> <p>Protein Size: 333</p>
Molecular Weight:	37 kDa
Gene ID:	12020
NCBI Accession:	NM_007524 , NP_031550
UniProt:	P97503

Application Details

Application Notes:	Optimal working dilutions should be determined experimentally by the investigator.
Comment:	Antigen size: 333 AA
Restrictions:	For Research Use only

Handling

Format:	Liquid
Concentration:	Lot specific
Buffer:	Liquid. Purified antibody supplied in 1x PBS buffer with 0.09 % (w/v) sodium azide and 2 % sucrose.
Preservative:	Sodium azide
Precaution of Use:	This product contains Sodium azide: a POISONOUS AND HAZARDOUS SUBSTANCE which should be handled by trained staff only.
Handling Advice:	Avoid repeated freeze-thaw cycles.
Storage:	-20 °C
Storage Comment:	For short term use, store at 2-8°C up to 1 week. For long term storage, store at -20°C in small aliquots to prevent freeze-thaw cycles.



Western Blotting

Image 1. Host: Rabbit Target Name: Bapx1 Sample Type: Jurkat Lane A: Primary Antibody Lane B: Primary Antibody + Blocking Peptide Primary Antibody Concentration: 0.5ug/mL Peptide Concentration: 1.0ug/mL Lysate Quantity: 25ug/lane Gel Concentration: 12%



Western Blotting

Image 2. WB Suggested Anti-Bapx1 Antibody Titration: 0.2-1 ug/ml ELISA Titer: 1:62500 Positive Control: Jurkat cell lysate