

Datasheet for ABIN2779827
anti-EGR1 antibody (C-Term)[Go to Product page](#)

3 Images

Overview

Quantity:	100 µL
Target:	EGR1
Binding Specificity:	C-Term
Reactivity:	Human, Mouse, Rat, Cow, Horse, Dog, Rabbit, Sheep, Guinea Pig
Host:	Rabbit
Clonality:	Polyclonal
Conjugate:	This EGR1 antibody is un-conjugated
Application:	Western Blotting (WB), Immunohistochemistry (IHC)

Product Details

Immunogen:	The immunogen is a synthetic peptide corresponding to a region of Mouse
Sequence:	PATTSFPSPV PTSYSSPGSS TYPSPAHSGF PSPSVATTFA SVPPAFPTQV
Predicted Reactivity:	Cow: 92%, Dog: 93%, Guinea Pig: 93%, Horse: 93%, Human: 93%, Mouse: 100%, Rabbit: 93%, Rat: 100%, Sheep: 92%
Characteristics:	This is a rabbit polyclonal antibody against Egr1. It was validated on Western Blot.
Purification:	Affinity Purified

Target Details

Target:	EGR1
Alternative Name:	Egr1 (EGR1 Products)

Target Details

Background:	<p>Egr1 is a transcriptional regulator. Egr1 recognizes and binds to the DNA sequence 5'-CGCCCCCGC-3'(EGR-site). Egr1 activates the transcription of target genes whose products are required for mitogenesis and differentiation.</p> <p>Alias Symbols: A530045N19Rik, ETR103, Egr-1, Krox-1, Krox-24, Krox24, NGF1-A, NGFI-A, NGFIA, TIS8, Zenk, Zfp-6, Zif268, egr</p> <p>Protein Interaction Partner: Sp1, Pin1, Sf1, Pitx1, Nab2, Egr1, G3bp1, Srf, Smarca4, Elk1, Hist4h4, Nelfe, Tbp, Gtf2b, Cdk8,</p> <p>Protein Size: 533</p>
Molecular Weight:	56 kDa
Gene ID:	13653
NCBI Accession:	NM_007913 , NP_031939
UniProt:	P08046
Pathways:	Regulation of Carbohydrate Metabolic Process , Regulation of long-term Neuronal Synaptic Plasticity

Application Details

Application Notes:	Optimal working dilutions should be determined experimentally by the investigator.
Comment:	Antigen size: 533 AA
Restrictions:	For Research Use only

Handling

Format:	Liquid
Concentration:	Lot specific
Buffer:	Liquid. Purified antibody supplied in 1x PBS buffer with 0.09 % (w/v) sodium azide and 2 % sucrose.
Preservative:	Sodium azide
Precaution of Use:	This product contains Sodium azide: a POISONOUS AND HAZARDOUS SUBSTANCE which should be handled by trained staff only.
Handling Advice:	Avoid repeated freeze-thaw cycles.
Storage:	-20 °C

Handling

Storage Comment: For short term use, store at 2-8°C up to 1 week. For long term storage, store at -20°C in small aliquots to prevent freeze-thaw cycles.

Validation report #104222 for Western Blotting (WB)

EGR1



Black: EGR1

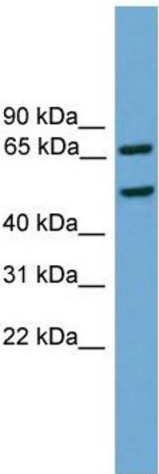
See IHC 1 Data and Customer Feedback for more Information

EGR1



Black: EGR1

See IHC 2 Data and Customer Feedback for more Information



Immunohistochemistry

Image 1. Sample Type : Frog brain Primary Antibody Dilution : 1:500 Secondary Antibody : Biotinylated goat anti-rabbit Secondary Antibody Dilution : 1:200 Color/Signal Descriptions : Black: EGR1 Gene Name : Egr1 a Submitted by : Eva Fischer, Colorado State University

Immunohistochemistry

Image 2. Sample Type : Frog brain Primary Antibody Dilution : 1:500 Secondary Antibody : Biotinylated goat anti-rabbit Secondary Antibody Dilution : 1:200 Color/Signal Descriptions : Black: EGR1 Gene Name : Egr1 a Submitted by : Eva Fischer, Colorado State University

Western Blotting

Image 3. WB Suggested Anti-Egr1 Antibody Titration: 0.2-1 ug/ml ELISA Titer: 1:62500 Positive Control: Mouse Heart