

Datasheet for ABIN2779828
anti-EGR1 antibody (N-Term)



[Go to Product page](#)

3 Images

Overview

Quantity:	100 µL
Target:	EGR1
Binding Specificity:	N-Term
Reactivity:	Mouse, Rat, Cow, Horse, Dog, Rabbit, Sheep, Pig
Host:	Rabbit
Clonality:	Polyclonal
Conjugate:	This EGR1 antibody is un-conjugated
Application:	Western Blotting (WB), Immunohistochemistry (IHC)

Product Details

Immunogen:	The immunogen is a synthetic peptide directed towards the N terminal region of mouse EGR1
Sequence:	GTPEGSGGNS SSSTSSGGGG GGGSNSGSSA FNPQGEPSEQ PYEHLTTESF
Predicted Reactivity:	Cow: 92%, Dog: 75%, Horse: 85%, Mouse: 100%, Pig: 85%, Rabbit: 77%, Rat: 100%, Sheep: 92%
Characteristics:	This is a rabbit polyclonal antibody against EGR1. It was validated on Western Blot using a cell lysate as a positive control.
Purification:	Protein A purified

Target Details

Target:	EGR1
Alternative Name:	EGR1 (EGR1 Products)

Target Details

Background:	<p>Early Growth Response Protein 1 (EGR1, Krox-24 protein, nerve growth factor-induced protein A, Transcription factor ETR103, Zinc finger protein 225) belongs to the EGR family of C2H2-type zinc-finger proteins. It is a nuclear protein and functions as a transcriptional regulator. The products of target genes it activates are required for differentiation and mitogenesis. Studies suggest this is a cancer suppressor gene.</p> <p>Alias Symbols: egr, TIS8, Zenk, Egr-1, NGFIA, Zfp-6, ETR103, Krox-1, Krox24, NGF1-A, NGFI-A, Zif268, Krox-24, A530045N19Rik</p> <p>Protein Interaction Partner: Sp1, Pin1, Sf1, Pitx1, Nab2, Egr1, G3bp1, Srf, Smarca4, Elk1, Hist4h4, Nelfe, Tbp, Gtf2b, Cdk8,</p> <p>Protein Size: 533</p>
Molecular Weight:	59 kDa
Gene ID:	13653
NCBI Accession:	NM_007913 , NP_031939
UniProt:	P08046
Pathways:	Regulation of Carbohydrate Metabolic Process , Regulation of long-term Neuronal Synaptic Plasticity

Application Details

Application Notes:	Optimal working dilutions should be determined experimentally by the investigator.
Comment:	Antigen size: 533 AA
Restrictions:	For Research Use only

Handling

Format:	Liquid
Concentration:	Lot specific
Buffer:	Liquid. Purified antibody supplied in 1x PBS buffer with 0.09 % (w/v) sodium azide and 2 % sucrose.
Preservative:	Sodium azide
Precaution of Use:	This product contains Sodium azide: a POISONOUS AND HAZARDOUS SUBSTANCE which should be handled by trained staff only.
Handling Advice:	Avoid repeated freeze-thaw cycles.

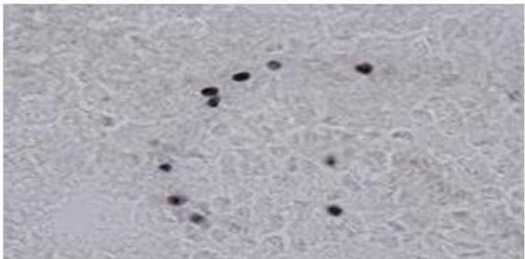
Handling

Storage:	-20 °C
Storage Comment:	For short term use, store at 2-8°C up to 1 week. For long term storage, store at -20°C in small aliquots to prevent freeze-thaw cycles.

Validation report #104222 for Western Blotting (WB)



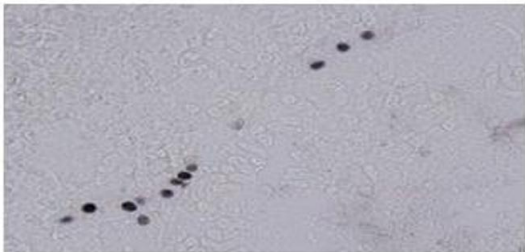
EGF1



Black: EGF1

See IHC 1 Data and Customer Feedback for more Information

EGF1



Black: EGF1

See IHC 2 Data and Customer Feedback for more Information

Western Blotting

Image 1. WB Suggested Anti-EGR1 Antibody Titration: 2.5ug/ml ELISA Titer: 1:12500 Positive Control: NIH/3T3 cell lysate

Immunohistochemistry

Image 2. Sample Type : Frog brain Primary Antibody Dilution : 1:500 Secondary Antibody : Biotinylated goat anti-rabbit Secondary Antibody Dilution : 1:200 Color/Signal Descriptions : Black: EGF1 Gene Name : EGR1 a Submitted by : Eva Fischer, Colorado State University

Immunohistochemistry

Image 3. Sample Type : Frog brain Primary Antibody Dilution : 1:500 Secondary Antibody : Biotinylated goat anti-rabbit Secondary Antibody Dilution : 1:200 Color/Signal Descriptions : Black: EGF1 Gene Name : EGR1 a Submitted by : Eva Fischer, Colorado State University