

Datasheet for ABIN2779832
anti-ELF3 antibody (N-Term)[Go to Product page](#)

3 Images

1 Publication

Overview

Quantity:	100 µL
Target:	ELF3
Binding Specificity:	N-Term
Reactivity:	Rat, Mouse
Host:	Rabbit
Clonality:	Polyclonal
Conjugate:	This ELF3 antibody is un-conjugated
Application:	Western Blotting (WB), Immunohistochemistry (IHC)

Product Details

Immunogen:	The immunogen is a synthetic peptide directed towards the N terminal region of mouse Elf3
Sequence:	MAATCEISNV FSNYFNAMYS SEDPTLAPAP PTTFGTEDLV LTLNNQQMTL
Predicted Reactivity:	Mouse: 100%, Rat: 93%
Characteristics:	This is a rabbit polyclonal antibody against Elf3. It was validated on Western Blot and immunohistochemistry.
Purification:	Affinity Purified

Target Details

Target:	ELF3
Alternative Name:	Elf3 (ELF3 Products)

Target Details

Background:	<p>Elf3 is a transcriptional activator that binds and transactivates ETS sequences containing the consensus nucleotide core sequence GGA[AT]. It acts synergistically with POU2F3 to transactivate the SPRR2A promoter and with RUNX1 to transactivate the ANGPT1 promoter (By similarity). It also transactivates collagenase, CCL20, CLND7, FLG, KRT8, NOS2, PTGS2, SPRR2B, TGFBR2 and TGM3 promoters. IT represses KRT4 promoter activity (By similarity). It may play an important role in epithelial cell differentiation and tumorigenesis and may be a critical downstream effector of the ERBB2 signaling pathway (By similarity). It may be associated with mammary gland development and involution. It plays an important role in the regulation of transcription with TATA-less promoters in preimplantation embryos, which is essential in preimplantation development.</p> <p>Alias Symbols: ESE-1, ESX, jen</p> <p>Protein Size: 371</p>
-------------	---

Molecular Weight:	41 kDa
-------------------	--------

Gene ID:	13710
----------	-------

NCBI Accession:	NM_007921 , NP_031947
-----------------	---

Application Details

Application Notes:	Optimal working dilutions should be determined experimentally by the investigator.
--------------------	--

Comment:	Antigen size: 371 AA
----------	----------------------

Restrictions:	For Research Use only
---------------	-----------------------

Handling

Format:	Liquid
---------	--------

Concentration:	Lot specific
----------------	--------------

Buffer:	Liquid. Purified antibody supplied in 1x PBS buffer with 0.09 % (w/v) sodium azide and 2 % sucrose.
---------	---

Preservative:	Sodium azide
---------------	--------------

Precaution of Use:	This product contains Sodium azide: a POISONOUS AND HAZARDOUS SUBSTANCE which should be handled by trained staff only.
--------------------	--

Handling Advice:	Avoid repeated freeze-thaw cycles.
------------------	------------------------------------

Storage:	-20 °C
----------	--------

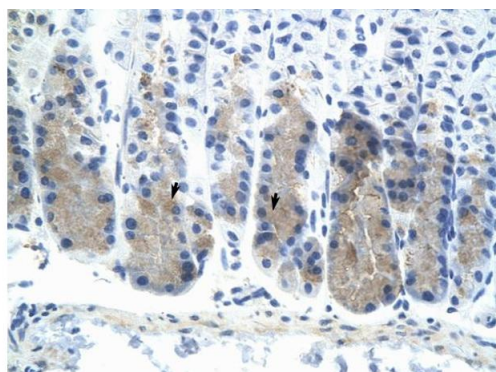
Handling

Storage Comment: For short term use, store at 2-8°C up to 1 week. For long term storage, store at -20°C in small aliquots to prevent freeze-thaw cycles.

Publications

Product cited in: Surjit, Oberoi, Kumar, Lal: "Enhanced alpha1 microglobulin secretion from Hepatitis E virus ORF3-expressing human hepatoma cells is mediated by the tumor susceptibility gene 101." in: **The Journal of biological chemistry**, Vol. 281, Issue 12, pp. 8135-42, (2006) ([PubMed](#)).

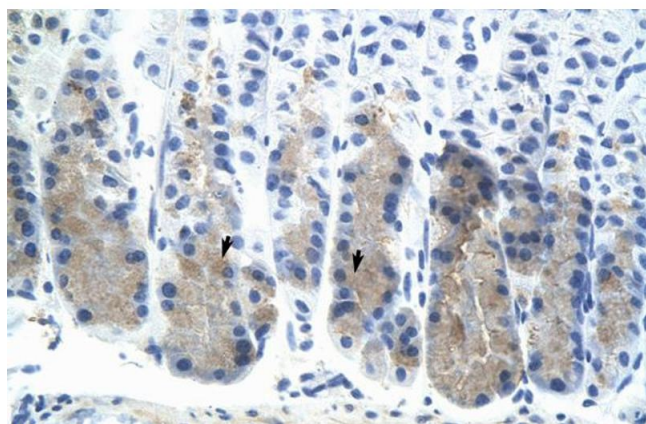
Validation report #100057 for Western Blotting (WB)



Rabbit Anti-Elf3 Antibody
Catalog Number: ARP36846
Lot Number: QC6193
Paraffin Embedded Tissue: Mouse Stomach
Cells with Positive label: Epithelial cells of fundic gland (Indicated with Arrows)
Antibody Concentration: 4.0-8.0 µg/ml
Magnification: 400X

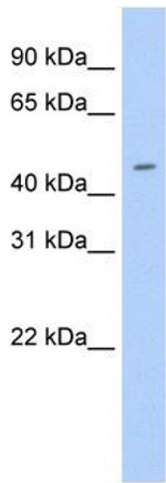
Immunohistochemistry

Image 1. Mouse Stomach



Immunohistochemistry

Image 2. Mouse Stomach



Western Blotting

Image 3. WB Suggested Anti-Elf3 Antibody Titration: 0.2-1 ug/ml ELISA Titer: 1:62500 Positive Control: Human Trachea